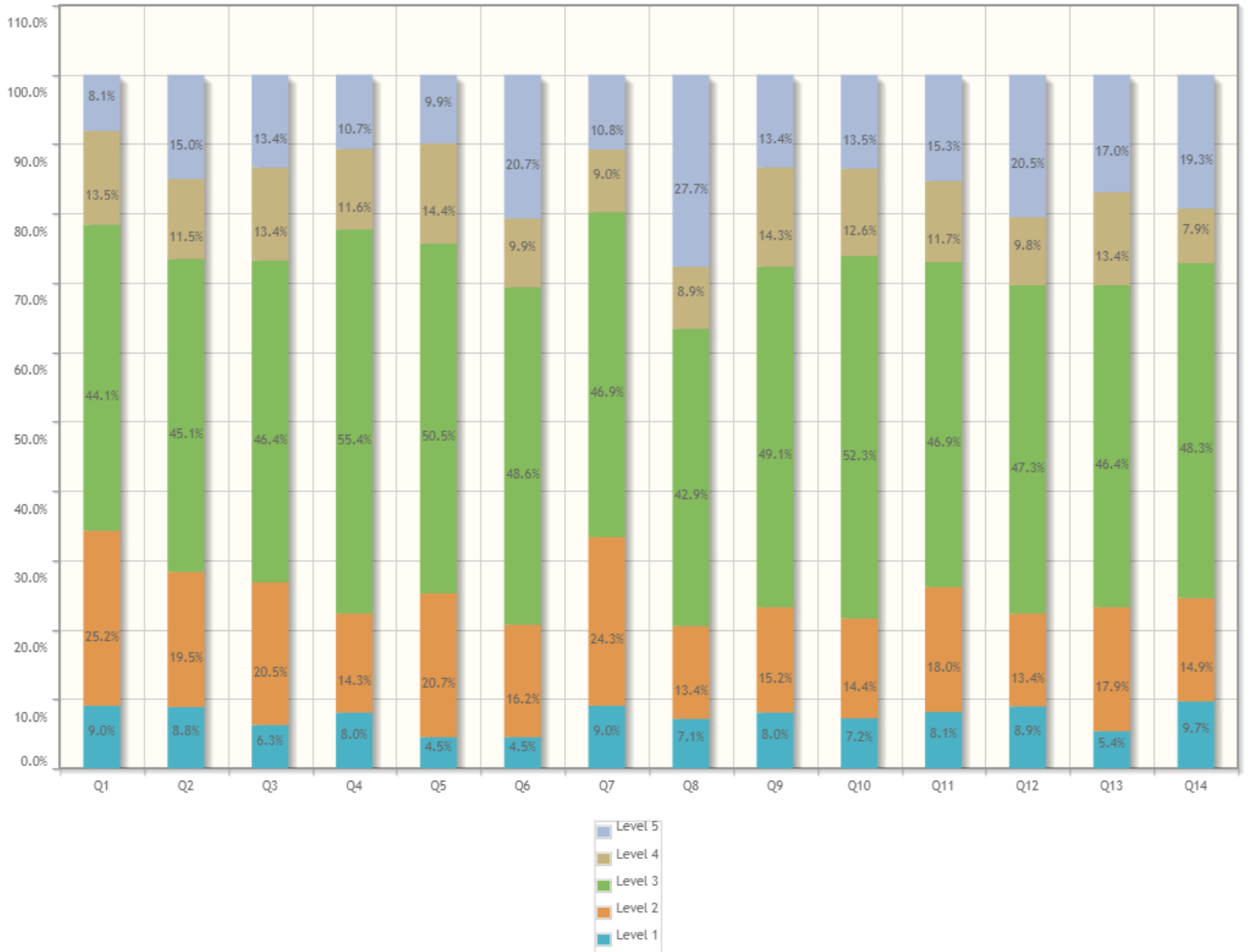


Survey Details - Detailed & Summary Report

Survey: 2022-23 ODD III SEM IFS	Survey Type: Fresh Survey
Survey For: Facility Feedback	Program: B.Tech. Computer Science and Engineering in Computer Science and Engineering

Detailed Report



1. Adequacy of Laboratory facilities (Number of set-ups/ equipments /tools etc.)	Responses	Weighted Responses	Percent
1. Excellent	10	50	9.01%
2. Very Good	28	112	25.23%
3. Good	49	147	44.14%
4. Fair	15	30	13.51%
5. Poor	9	9	8.11%
Total	111	348	62.70%



Sir Shantilal Badjate Charitable Trust, Nagpur
 S. B. Jain Institute of Technology, Management & Research, Nagpur
 (Approved by AICTE, An Autonomous Institute) Affiliated to R. T. M. Nagpur University
 Department of Computer Science and Engineering

2. Mechanism and approach to provide exposure to external world through Internships, Field Visits, Guest Lectures, Expert Talks etc.	Responses	Weighted Responses	Percent
1. Excellent	10	50	8.85%
2. Very Good	22	88	19.47%
3. Good	51	153	45.13%
4. Fair	13	26	11.50%
5. Poor	17	17	15.04%
Total	113	334	59.12%

3. Infrastructure (Furniture/Black Board / Illumination/Ventilation etc.)	Responses	Weighted Responses	Percent
1. Excellent	7	35	6.25%
2. Very Good	23	92	20.54%
3. Good	52	156	46.43%
4. Fair	15	30	13.39%
5. Poor	15	15	13.39%
Total	112	328	58.57%

4. Mechanism and approach to deal with students/parents grievances	Responses	Weighted Responses	Percent
1. Excellent	9	45	8.04%
2. Very Good	16	64	14.29%
3. Good	62	186	55.36%
4. Fair	13	26	11.61%
5. Poor	12	12	10.71%
Total	112	333	59.46%

5. Students guidance and mentoring facilities	Responses	Weighted Responses	Percent
1. Excellent	5	25	4.50%
2. Very Good	23	92	20.72%
3. Good	56	168	50.45%
4. Fair	16	32	14.41%
5. Poor	11	11	9.91%
Total	111	328	59.10%

6. Support for co-curricular and extra-curricular activities	Responses	Weighted Responses	Percent
1. Excellent	5	25	4.50%
2. Very Good	18	72	16.22%
3. Good	54	162	48.65%
4. Fair	11	22	9.91%
5. Poor	23	23	20.72%
Total	111	304	54.77%

7. Library Facility	Responses	Weighted Responses	Percent
1. Excellent	10	50	9.01%
2. Very Good	27	108	24.32%



Sir Shantilal Badjate Charitable Trust, Nagpur
 S. B. Jain Institute of Technology, Management & Research, Nagpur
 (Approved by AICTE, An Autonomous Institute) Affiliated to R. T. M. Nagpur University
 Department of Computer Science and Engineering

7. Library Facility	Responses	Weighted Responses	Percent
3. Good	52	156	46.85%
4. Fair	10	20	9.01%
5. Poor	12	12	10.81%
Total	111	346	62.34%

8. Sports Facility	Responses	Weighted Responses	Percent
1. Excellent	8	40	7.14%
2. Very Good	15	60	13.39%
3. Good	48	144	42.86%
4. Fair	10	20	8.93%
5. Poor	31	31	27.68%
Total	112	295	52.68%

9. Canteen Facility	Responses	Weighted Responses	Percent
1. Excellent	9	45	8.04%
2. Very Good	17	68	15.18%
3. Good	55	165	49.11%
4. Fair	16	32	14.29%
5. Poor	15	15	13.39%
Total	112	325	58.04%

10. Transport Facility	Responses	Weighted Responses	Percent
1. Excellent	8	40	7.21%
2. Very Good	16	64	14.41%
3. Good	58	174	52.25%
4. Fair	14	28	12.61%
5. Poor	15	15	13.51%
Total	111	321	57.84%

11. Internet Facility	Responses	Weighted Responses	Percent
1. Excellent	9	45	8.11%
2. Very Good	20	80	18.02%
3. Good	52	156	46.85%
4. Fair	13	26	11.71%
5. Poor	17	17	15.32%
Total	111	324	58.38%

12. Housekeeping	Responses	Weighted Responses	Percent
1. Excellent	10	50	8.93%
2. Very Good	15	60	13.39%
3. Good	53	159	47.32%
4. Fair	11	22	9.82%
5. Poor	23	23	20.54%
Total	112	314	56.07%



Summary Report

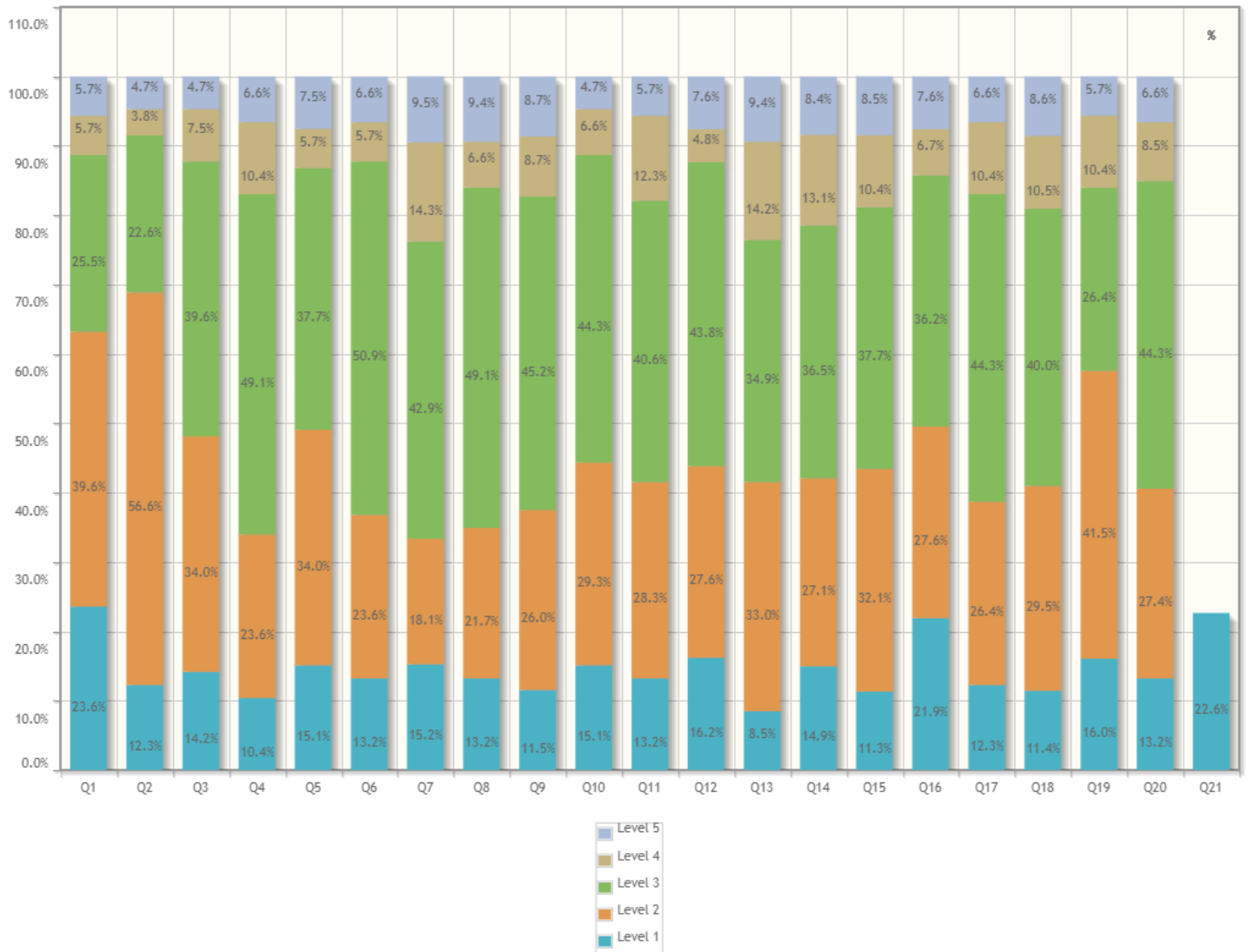
Number of people Responded / Total number of Responders is **111 / 137** People.

Questions	Total Response Count	Weighted Response Percent
Adequacy of Laboratory facilities (Number of set-ups/ equipments /tools etc.)	348	62.70%
Mechanism and approach to provide exposure to external world through Internships, Field Visits, Guest Lectures, Expert Talks etc.	334	59.12%
Infrastructure (Furniture/Black Board / Illumination/Ventilation etc.)	328	58.57%
Mechanism and approach to deal with students/parents grievances	333	59.46%
Students guidance and mentoring facilities	328	59.10%
Support for co-curricular and extra-curricular activities	304	54.77%
Library Facility	346	62.34%
Sports Facility	295	52.68%
Canteen Facility	325	58.04%
Transport Facility	321	57.84%
Internet Facility	324	58.38%
Housekeeping	314	56.07%
First Aid Facility	315	56.25%
Security Facility	328	57.54%
Total Feedback	4543	58.06%

Survey Details - Detailed & Summary Report

Survey: 2022-23 ODD III SEM SSS TLP	Survey Type: Fresh Survey
Survey For: Facility Feedback	Program: B.Tech. Computer Science and Engineering in Computer Science and Engineering

Detailed Report



1. How much of the syllabus was covered in the class?	Responses	Weighted Responses	Percent
1. 85 to 100%	25	125	23.58%
2. 70 to 84%	42	168	39.62%
3. 55 to 69%	27	81	25.47%
4. 30 to 54%	6	12	5.66%
5. Below 30%	6	6	5.66%
Total	106	392	73.96%



Sir Shantilal Badjate Charitable Trust, Nagpur
 S. B. Jain Institute of Technology, Management & Research, Nagpur
 (Approved by AICTE, An Autonomous Institute) Affiliated to R. T. M. Nagpur University
 Department of Computer Science and Engineering

7. The institute takes active interest in promoting internship opportunities for students.	Responses	Weighted Responses	Percent
5. Never	10	10	9.52%
Total	105	331	63.05%

8. The teaching and mentoring process in your institution facilitates you in cognitive, social and emotional growth.	Responses	Weighted Responses	Percent
1. Significantly	14	70	13.21%
2. Very well	23	92	21.70%
3. Moderately	52	156	49.06%
4. Marginally	7	14	6.60%
5. Not at all	10	10	9.43%
Total	106	342	64.53%

9. The institution provides multiple opportunities to learn and grow.	Responses	Weighted Responses	Percent
1. Strongly agree	12	60	11.54%
2. Agree	27	108	25.96%
3. Neutral	47	141	45.19%
4. Disagree	9	18	8.65%
5. Strongly disagree	9	9	8.65%
Total	104	336	64.62%

10. Teachers inform you about your expected competencies, course outcomes and programme outcomes and review the course syllabus in the class.	Responses	Weighted Responses	Percent
1. Every time	16	80	15.09%
2. Usually	31	124	29.25%
3. Occasionally/Sometimes	47	141	44.34%
4. Rarely	7	14	6.60%
5. Never	5	5	4.72%
Total	106	364	68.68%

11. Your mentor does a necessary follow-up with an assigned task to you	Responses	Weighted Responses	Percent
1. Every time	14	70	13.21%
2. Usually	30	120	28.30%
3. Occasionally/Sometimes	43	129	40.57%
4. Rarely	13	26	12.26%
5. I don't have a mentor	6	6	5.66%
Total	106	351	66.23%

12. The teachers illustrate the concepts through examples and applications.	Responses	Weighted Responses	Percent
1. Every time	17	85	16.19%
2. Usually	29	116	27.62%
3. Occasionally/Sometimes	46	138	43.81%
4. Rarely	5	10	4.76%
5. Never	8	8	7.62%



Sir Shantilal Badjate Charitable Trust, Nagpur
 S. B. Jain Institute of Technology, Management & Research, Nagpur
 (Approved by AICTE, An Autonomous Institute) Affiliated to R. T. M. Nagpur University
 Department of Computer Science and Engineering

12. The teachers illustrate the concepts through examples and applications.	Responses	Weighted Responses	Percent
Total	105	357	68.00%

13. The teachers identify your strengths and encourage you with providing right level of challenges.	Responses	Weighted Responses	Percent
1. Fully	9	45	8.49%
2. Reasonably	35	140	33.02%
3. Partially	37	111	34.91%
4. Slightly	15	30	14.15%
5. Unable to	10	10	9.43%
Total	106	336	63.40%

14. Teachers are able to identify your weaknesses and help you to overcome them.	Responses	Weighted Responses	Percent
1. Every time	16	80	14.95%
2. Usually	29	116	27.10%
3. Occasionally/Sometimes	39	117	36.45%
4. Rarely	14	28	13.08%
5. Never	9	9	8.41%
Total	107	350	65.42%

15. The institution makes effort to engage students in the monitoring, review and continuous quality improvement of the teaching learning process.	Responses	Weighted Responses	Percent
1. Strongly agree	12	60	11.32%
2. Agree	34	136	32.08%
3. Neutral	40	120	37.74%
4. Disagree	11	22	10.38%
5. Strongly disagree	9	9	8.49%
Total	106	347	65.47%

16. The institute/ teachers use student centric methods, such as experiential learning, participative learning and problem solving methodologies for enhancing learning experiences.	Responses	Weighted Responses	Percent
1. To a great extent	23	115	21.90%
2. Moderate	29	116	27.62%
3. Some what	38	114	36.19%
4. Very little	7	14	6.67%
5. Not at all	8	8	7.62%
Total	105	367	69.90%

17. Teachers encourage you to participate in extracurricular activities.	Responses	Weighted Responses	Percent
1. Strongly agree	13	65	12.26%
2. Agree	28	112	26.42%
3. Neutral	47	141	44.34%
4. Disagree	11	22	10.38%
5. Strongly disagree	7	7	6.60%



Sir Shantilal Badjate Charitable Trust, Nagpur
 S. B. Jain Institute of Technology, Management & Research, Nagpur
 (Approved by AICTE, An Autonomous Institute) Affiliated to R. T. M. Nagpur University
 Department of Computer Science and Engineering

17. Teachers encourage you to participate in extracurricular activities.	Responses	Weighted Responses	Percent
Total	106	347	65.47%

18. Efforts are made by the institute/ teachers to inculcate soft skills, life skills and employability skills to make you ready for the world of work.	Responses	Weighted Responses	Percent
1. To a great extent	12	60	11.43%
2. Moderate	31	124	29.52%
3. Some what	42	126	40.00%
4. Very little	11	22	10.48%
5. Not at all	9	9	8.57%
Total	105	341	64.95%

19. What percentage of teachers uses ICT tools such as PPTs, Multimedia, animations, etc. while teaching	Responses	Weighted Responses	Percent
1. Above 90%	17	85	16.04%
2. 70 - 89%	44	176	41.51%
3. 50 - 69%	28	84	26.42%
4. 30 - 49%	11	22	10.38%
5. Below 29%	6	6	5.66%
Total	106	373	70.38%

20. The overall quality of teaching-learning process in your institute is very good.	Responses	Weighted Responses	Percent
1. Strongly agree	14	70	13.21%
2. Agree	29	116	27.36%
3. Neutral	47	141	44.34%
4. Disagree	9	18	8.49%
5. Strongly disagree	7	7	6.60%
Total	106	352	66.42%

21. Give three observation / suggestions to improve the overall teaching - learning experience in your institution. (Observation/Suggestion may also be a review of any course content of the syllabus/ Content you would have wished to learn).	Responses	Weighted Responses	Percent
1. Write Your answer in comment box	24	120	22.64%
Total	106	366	69.06%



Summary Report

Number of people Responded / Total number of Responders is **106 / 137** People.

Questions	Total Response Count	Weighted Response Percent
How much of the syllabus was covered in the class?	392	73.96%
How well did the teachers prepare for the classes?	390	73.58%
How well were the teachers able to communicate?	366	69.06%
The teacher's approach to teaching can best be described as	340	64.15%
Fairness of the internal evaluation process by the teachers	364	68.68%
Was your performance in assignments discussed with you?	351	66.23%
The institute takes active interest in promoting internship opportunities for students.	331	63.05%
The teaching and mentoring process in your institution facilitates you in cognitive, social and emotional growth.	342	64.53%
The institution provides multiple opportunities to learn and grow.	336	64.62%
Teachers inform you about your expected competencies, course outcomes and programme outcomes and review the course syllabus in the class.	364	68.68%
Your mentor does a necessary follow-up with an assigned task to you	351	66.23%
The teachers illustrate the concepts through examples and applications.	357	68.00%
The teachers identify your strengths and encourage you with providing right level of challenges.	336	63.40%
Teachers are able to identify your weaknesses and help you to overcome them.	350	65.42%
The institution makes effort to engage students in the monitoring, review and continuous quality improvement of the teaching learning process.	347	65.47%
The institute/ teachers use student centric methods, such as experiential learning, participative learning and problem solving methodologies for enhancing learning experiences.	367	69.90%
Teachers encourage you to participate in extracurricular activities.	347	65.47%
Efforts are made by the institute/ teachers to inculcate soft skills, life skills and employability skills to make you ready for the world of work.	341	64.95%



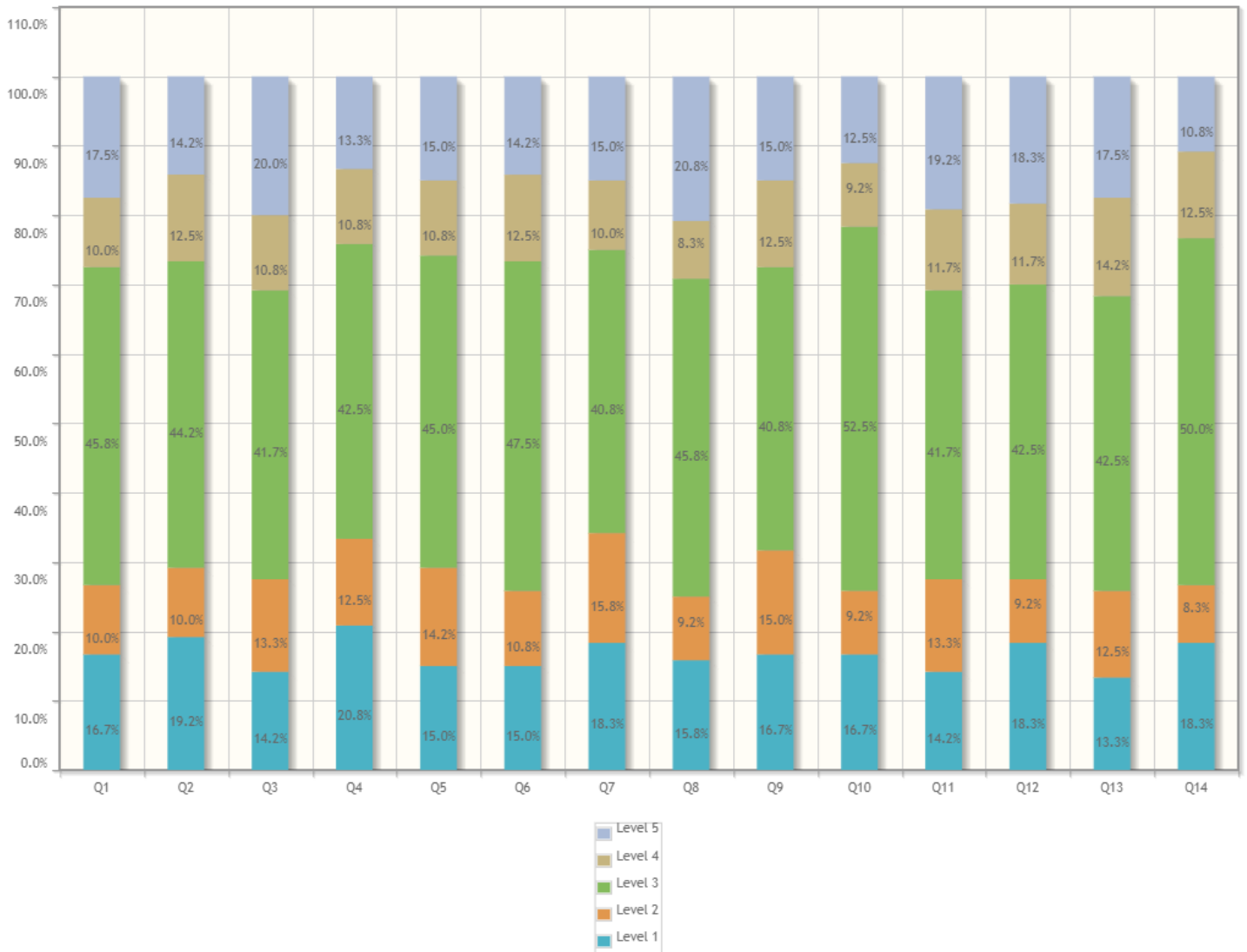
Sir Shantilal Badjate Charitable Trust, Nagpur
S. B. Jain Institute of Technology, Management & Research, Nagpur
(Approved by AICTE, An Autonomous Institute) Affiliated to R. T. M. Nagpur University
Department of Computer Science and Engineering

Questions	Total Response Count	Weighted Response Percent
What percentage of teachers uses ICT tools such as PPTs, Multimedia, animations, etc. while teaching	373	70.38%
The overall quality of teaching-learning process in your institute is very good.	352	66.42%
Give three observation / suggestions to improve the overall teaching - learning experience in your institution. (Observation/Suggestion may also be a review of any course content of the syllabus/ Content you would have wished to learn).	366	69.06%
Total Feedback	7463	67.20%

Survey Details - Detailed & Summary Report

Survey: 22-23 EVEN IV Sem IFS	Survey Type: Fresh Survey
Survey For: Facility Feedback	Program: B.Tech. Computer Science and Engineering in Computer Science and Engineering

Detailed Report



1. Adequacy of Laboratory facilities (Number of set-ups/ equipments /tools etc.)	Responses	Weighted Responses	Percent
1. Excellent	20	100	16.67%
2. Very Good	12	48	10.00%
3. Good	55	165	45.83%
4. Fair	12	24	10.00%
5. Poor	21	21	17.50%
Total	120	358	59.67%



Sir Shantilal Badjate Charitable Trust, Nagpur
 S. B. Jain Institute of Technology, Management & Research, Nagpur
 (Approved by AICTE, An Autonomous Institute) Affiliated to R. T. M. Nagpur University
 Department of Computer Science and Engineering

2. Mechanism and approach to provide exposure to external world through Internships, Field Visits, Guest Lectures, Expert Talks etc.	Responses	Weighted Responses	Percent
1. Excellent	23	115	19.17%
2. Very Good	12	48	10.00%
3. Good	53	159	44.17%
4. Fair	15	30	12.50%
5. Poor	17	17	14.17%
Total	120	369	61.50%

3. Infrastructure (Furniture/Black Board / Illumination/Ventilation etc.)	Responses	Weighted Responses	Percent
1. Excellent	17	85	14.17%
2. Very Good	16	64	13.33%
3. Good	50	150	41.67%
4. Fair	13	26	10.83%
5. Poor	24	24	20.00%
Total	120	349	58.17%

4. Mechanism and approach to deal with students/parents grievances	Responses	Weighted Responses	Percent
1. Excellent	25	125	20.83%
2. Very Good	15	60	12.50%
3. Good	51	153	42.50%
4. Fair	13	26	10.83%
5. Poor	16	16	13.33%
Total	120	380	63.33%

5. Students guidance and mentoring facilities	Responses	Weighted Responses	Percent
1. Excellent	18	90	15.00%
2. Very Good	17	68	14.17%
3. Good	54	162	45.00%
4. Fair	13	26	10.83%
5. Poor	18	18	15.00%
Total	120	364	60.67%

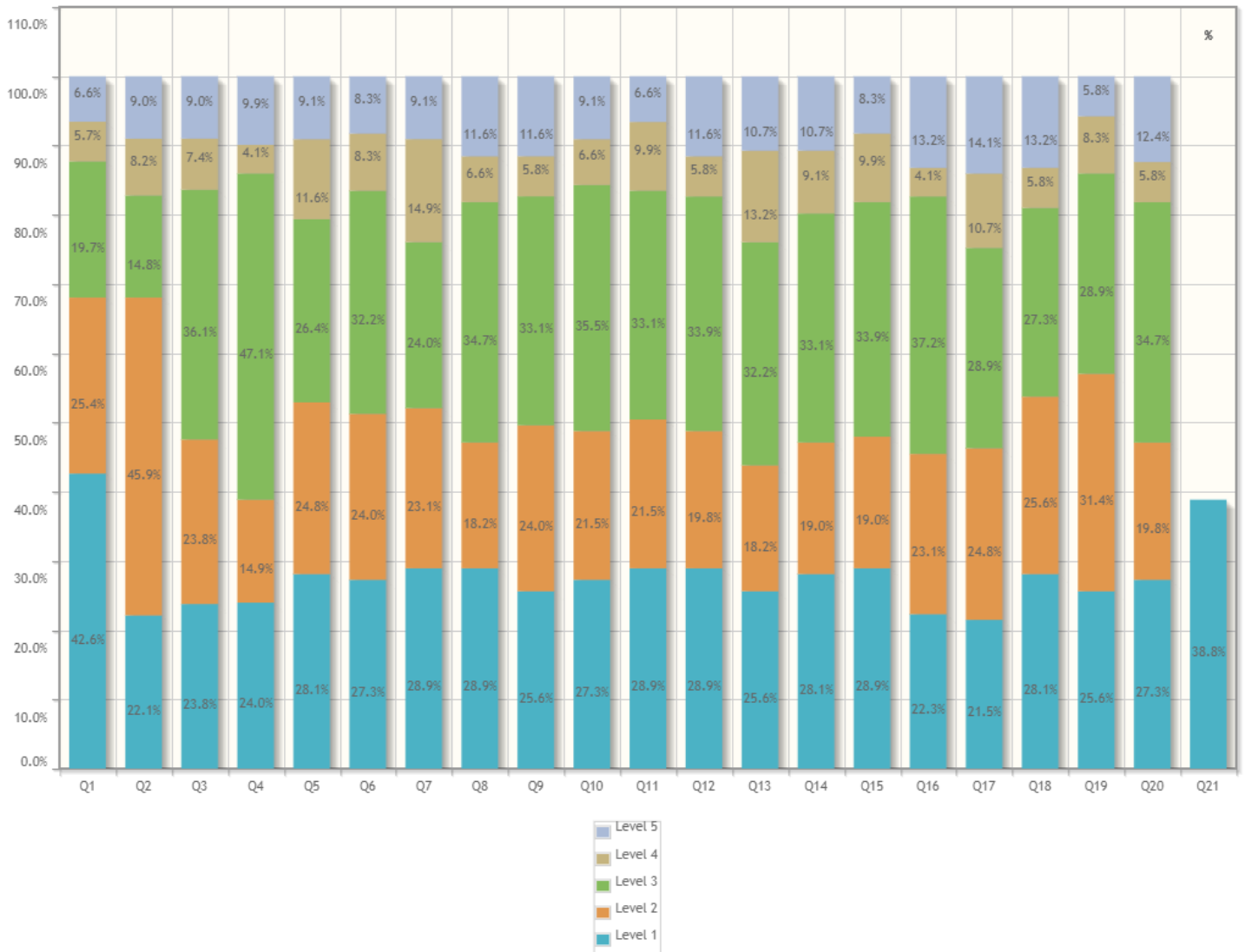
6. Support for co-curricular and extra-curricular activities	Responses	Weighted Responses	Percent
1. Excellent	18	90	15.00%
2. Very Good	13	52	10.83%
3. Good	57	171	47.50%
4. Fair	15	30	12.50%
5. Poor	17	17	14.17%
Total	120	360	60.00%

7. Library Facility	Responses	Weighted Responses	Percent
1. Excellent	22	110	18.33%
2. Very Good	19	76	15.83%

Survey Details - Detailed & Summary Report

Survey: 22-23 EVEN IV Sem SSS TLP	Survey Type: Fresh Survey
Survey For: Facility Feedback	Program: B.Tech. Computer Science and Engineering in Computer Science and Engineering

Detailed Report



1. How much of the syllabus was covered in the class?	Responses	Weighted Responses	Percent
1. 85 to 100%	52	260	42.62%
2. 70 to 84%	31	124	25.41%
3. 55 to 69%	24	72	19.67%
4. 30 to 54%	7	14	5.74%
5. Below 30%	8	8	6.56%
Total	122	478	78.36%



Sir Shantilal Badjate Charitable Trust, Nagpur
 S. B. Jain Institute of Technology, Management & Research, Nagpur
 (Approved by AICTE, An Autonomous Institute) Affiliated to R. T. M. Nagpur University
 Department of Computer Science and Engineering

2. How well did the teachers prepare for the classes?	Responses	Weighted Responses	Percent
1. Thoroughly	27	135	22.13%
2. Satisfactorily	56	224	45.90%
3. Poorly	18	54	14.75%
4. Indifferently	10	20	8.20%
5. Won't teach at all	11	11	9.02%
Total	122	444	72.79%

3. How well were the teachers able to communicate?	Responses	Weighted Responses	Percent
1. Always effective	29	145	23.77%
2. Sometimes effective	29	116	23.77%
3. Just satisfactorily	44	132	36.07%
4. Generally ineffective	9	18	7.38%
5. Very poor communication	11	11	9.02%
Total	122	422	69.18%

4. The teacher's approach to teaching can best be described as	Responses	Weighted Responses	Percent
1. Excellent	29	145	23.97%
2. Very good	18	72	14.88%
3. Good	57	171	47.11%
4. Fair	5	10	4.13%
5. Poor	12	12	9.92%
Total	121	410	67.77%

5. Fairness of the internal evaluation process by the teachers	Responses	Weighted Responses	Percent
1. Always fair	34	170	28.10%
2. Usually fair	30	120	24.79%
3. Sometimes unfair	32	96	26.45%
4. Usually unfair	14	28	11.57%
5. Unfair	11	11	9.09%
Total	121	425	70.25%

6. Was your performance in assignments discussed with you?	Responses	Weighted Responses	Percent
1. Every time	33	165	27.27%
2. Usually	29	116	23.97%
3. Occasionally/Sometimes	39	117	32.23%
4. Rarely	10	20	8.26%
5. Never	10	10	8.26%
Total	121	428	70.74%

7. The institute takes active interest in promoting internship opportunities for students.	Responses	Weighted Responses	Percent
1. Regularly	35	175	28.93%
2. Often	28	112	23.14%
3. Sometimes	29	87	23.97%
4. Rarely	18	36	14.88%



Sir Shantilal Badjate Charitable Trust, Nagpur
 S. B. Jain Institute of Technology, Management & Research, Nagpur
 (Approved by AICTE, An Autonomous Institute) Affiliated to R. T. M. Nagpur University
 Department of Computer Science and Engineering

7. The institute takes active interest in promoting internship opportunities for students.	Responses	Weighted Responses	Percent
5. Never	11	11	9.09%
Total	121	421	69.59%

8. The teaching and mentoring process in your institution facilitates you in cognitive, social and emotional growth.	Responses	Weighted Responses	Percent
1. Significantly	35	175	28.93%
2. Very well	22	88	18.18%
3. Moderately	42	126	34.71%
4. Marginally	8	16	6.61%
5. Not at all	14	14	11.57%
Total	121	419	69.26%

9. The institution provides multiple opportunities to learn and grow.	Responses	Weighted Responses	Percent
1. Strongly agree	31	155	25.62%
2. Agree	29	116	23.97%
3. Neutral	40	120	33.06%
4. Disagree	7	14	5.79%
5. Strongly disagree	14	14	11.57%
Total	121	419	69.26%

10. Teachers inform you about your expected competencies, course outcomes and programme outcomes and review the course syllabus in the class.	Responses	Weighted Responses	Percent
1. Every time	33	165	27.27%
2. Usually	26	104	21.49%
3. Occasionally/Sometimes	43	129	35.54%
4. Rarely	8	16	6.61%
5. Never	11	11	9.09%
Total	121	425	70.25%

11. Your mentor does a necessary follow-up with an assigned task to you	Responses	Weighted Responses	Percent
1. Every time	35	175	28.93%
2. Usually	26	104	21.49%
3. Occasionally/Sometimes	40	120	33.06%
4. Rarely	12	24	9.92%
5. I don't have a mentor	8	8	6.61%
Total	121	431	71.24%

12. The teachers illustrate the concepts through examples and applications.	Responses	Weighted Responses	Percent
1. Every time	35	175	28.93%
2. Usually	24	96	19.83%
3. Occasionally/Sometimes	41	123	33.88%
4. Rarely	7	14	5.79%
5. Never	14	14	11.57%



Sir Shantilal Badjate Charitable Trust, Nagpur
 S. B. Jain Institute of Technology, Management & Research, Nagpur
 (Approved by AICTE, An Autonomous Institute) Affiliated to R. T. M. Nagpur University
 Department of Computer Science and Engineering

12. The teachers illustrate the concepts through examples and applications.	Responses	Weighted Responses	Percent
Total	121	422	69.75%

13. The teachers identify your strengths and encourage you with providing right level of challenges.	Responses	Weighted Responses	Percent
1. Fully	31	155	25.62%
2. Reasonably	22	88	18.18%
3. Partially	39	117	32.23%
4. Slightly	16	32	13.22%
5. Unable to	13	13	10.74%
Total	121	405	66.94%

14. Teachers are able to identify your weaknesses and help you to overcome them.	Responses	Weighted Responses	Percent
1. Every time	34	170	28.10%
2. Usually	23	92	19.01%
3. Occasionally/Sometimes	40	120	33.06%
4. Rarely	11	22	9.09%
5. Never	13	13	10.74%
Total	121	417	68.93%

15. The institution makes effort to engage students in the monitoring, review and continuous quality improvement of the teaching learning process.	Responses	Weighted Responses	Percent
1. Strongly agree	35	175	28.93%
2. Agree	23	92	19.01%
3. Neutral	41	123	33.88%
4. Disagree	12	24	9.92%
5. Strongly disagree	10	10	8.26%
Total	121	424	70.08%

16. The institute/ teachers use student centric methods, such as experiential learning, participative learning and problem solving methodologies for enhancing learning experiences.	Responses	Weighted Responses	Percent
1. To a great extent	27	135	22.31%
2. Moderate	28	112	23.14%
3. Some what	45	135	37.19%
4. Very little	5	10	4.13%
5. Not at all	16	16	13.22%
Total	121	408	67.44%

17. Teachers encourage you to participate in extracurricular activities.	Responses	Weighted Responses	Percent
1. Strongly agree	26	130	21.49%
2. Agree	30	120	24.79%
3. Neutral	35	105	28.93%
4. Disagree	13	26	10.74%
5. Strongly disagree	17	17	14.05%



Summary Report

Number of people Responded / Total number of Responders is **121 / 137** People.

Questions	Total Response Count	Weighted Response Percent
How much of the syllabus was covered in the class?	478	78.36%
How well did the teachers prepare for the classes?	444	72.79%
How well were the teachers able to communicate?	422	69.18%
The teacher's approach to teaching can best be described as	410	67.77%
Fairness of the internal evaluation process by the teachers	425	70.25%
Was your performance in assignments discussed with you?	428	70.74%
The institute takes active interest in promoting internship opportunities for students.	421	69.59%
The teaching and mentoring process in your institution facilitates you in cognitive, social and emotional growth.	419	69.26%
The institution provides multiple opportunities to learn and grow.	419	69.26%
Teachers inform you about your expected competencies, course outcomes and programme outcomes and review the course syllabus in the class.	425	70.25%
Your mentor does a necessary follow-up with an assigned task to you	431	71.24%
The teachers illustrate the concepts through examples and applications.	422	69.75%
The teachers identify your strengths and encourage you with providing right level of challenges.	405	66.94%
Teachers are able to identify your weaknesses and help you to overcome them.	417	68.93%
The institution makes effort to engage students in the monitoring, review and continuous quality improvement of the teaching learning process.	424	70.08%
The institute/ teachers use student centric methods, such as experiential learning, participative learning and problem solving methodologies for enhancing learning experiences.	408	67.44%
Teachers encourage you to participate in extracurricular activities.	398	65.79%
Efforts are made by the institute/ teachers to inculcate soft skills, life skills and employability skills to make you ready for the world of work.	423	69.92%



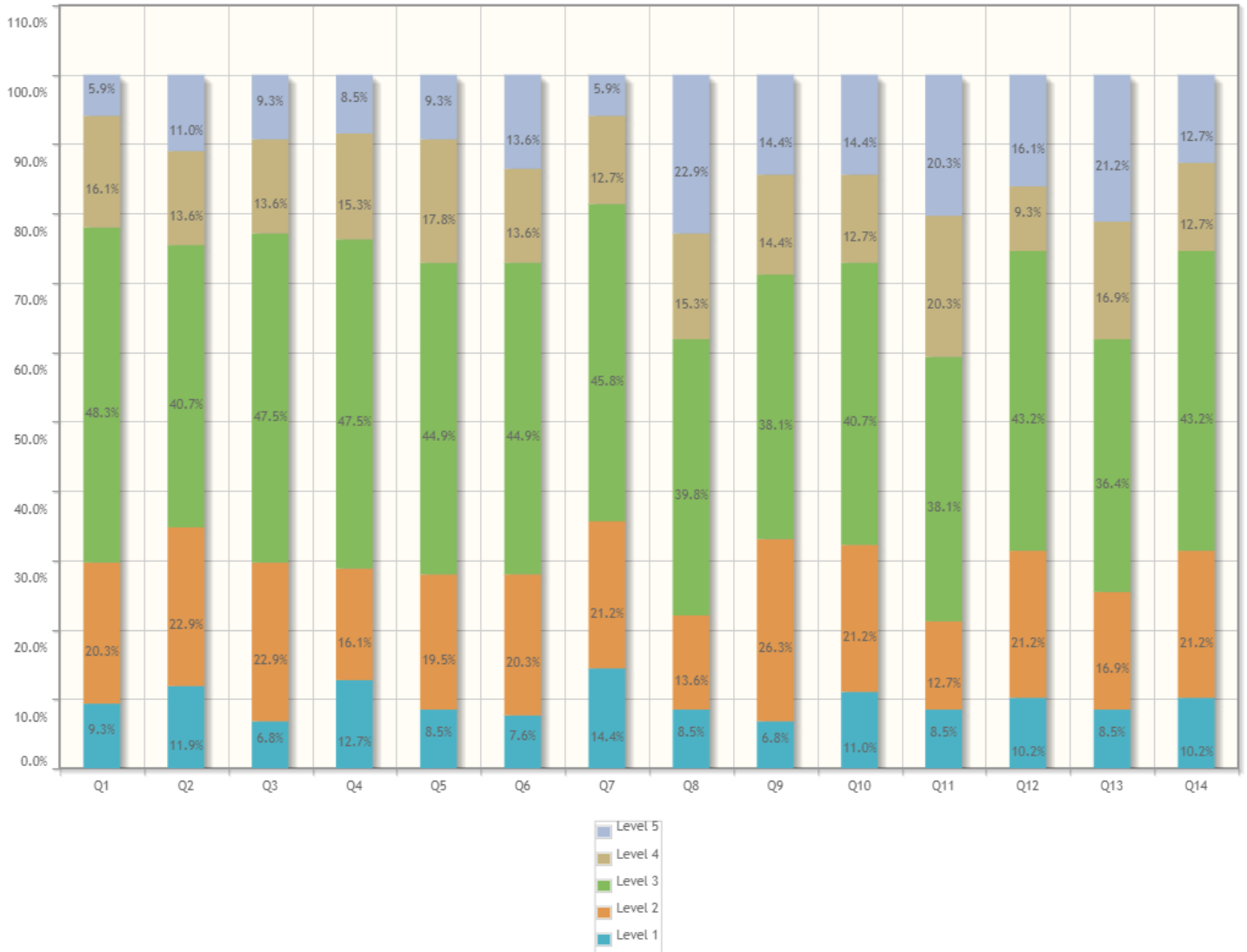
Sir Shantilal Badjate Charitable Trust, Nagpur
S. B. Jain Institute of Technology, Management & Research, Nagpur
(Approved by AICTE, An Autonomous Institute) Affiliated to R. T. M. Nagpur University
Department of Computer Science and Engineering

Questions	Total Response Count	Weighted Response Percent
What percentage of teachers uses ICT tools such as PPTs, Multimedia, animations, etc. while teaching	439	72.56%
The overall quality of teaching-learning process in your institute is very good.	416	68.76%
Give three observation / suggestions to improve the overall teaching - learning experience in your institution. (Observation/Suggestion may also be a review of any course content of the syllabus/ Content you would have wished to learn).	442	73.06%
Total Feedback	8916	70.09%

Survey Details - Detailed & Summary Report

Survey: 2022-23 ODD V SSS IFS	Survey Type: Fresh Survey
Survey For: Facility Feedback	Program: B.Tech. Computer Science and Engineering in Computer Science and Engineering

Detailed Report



1. Adequacy of Laboratory facilities (Number of set-ups/ equipments /tools etc.)	Responses	Weighted Responses	Percent
1. Excellent	11	55	9.32%
2. Very Good	24	96	20.34%
3. Good	57	171	48.31%
4. Fair	19	38	16.10%
5. Poor	7	7	5.93%
Total	118	367	62.20%



Sir Shantilal Badjate Charitable Trust, Nagpur
 S. B. Jain Institute of Technology, Management & Research, Nagpur
 (Approved by AICTE, An Autonomous Institute) Affiliated to R. T. M. Nagpur University
 Department of Computer Science and Engineering

2. Mechanism and approach to provide exposure to external world through Internships, Field Visits, Guest Lectures, Expert Talks etc.	Responses	Weighted Responses	Percent
1. Excellent	14	70	11.86%
2. Very Good	27	108	22.88%
3. Good	48	144	40.68%
4. Fair	16	32	13.56%
5. Poor	13	13	11.02%
Total	118	367	62.20%

3. Infrastructure (Furniture/Black Board / Illumination/Ventilation etc.)	Responses	Weighted Responses	Percent
1. Excellent	8	40	6.78%
2. Very Good	27	108	22.88%
3. Good	56	168	47.46%
4. Fair	16	32	13.56%
5. Poor	11	11	9.32%
Total	118	359	60.85%

4. Mechanism and approach to deal with students/parents grievances	Responses	Weighted Responses	Percent
1. Excellent	15	75	12.71%
2. Very Good	19	76	16.10%
3. Good	56	168	47.46%
4. Fair	18	36	15.25%
5. Poor	10	10	8.47%
Total	118	365	61.86%

5. Students guidance and mentoring facilities	Responses	Weighted Responses	Percent
1. Excellent	10	50	8.47%
2. Very Good	23	92	19.49%
3. Good	53	159	44.92%
4. Fair	21	42	17.80%
5. Poor	11	11	9.32%
Total	118	354	60.00%

6. Support for co-curricular and extra-curricular activities	Responses	Weighted Responses	Percent
1. Excellent	9	45	7.63%
2. Very Good	24	96	20.34%
3. Good	53	159	44.92%
4. Fair	16	32	13.56%
5. Poor	16	16	13.56%
Total	118	348	58.98%

7. Library Facility	Responses	Weighted Responses	Percent
1. Excellent	17	85	14.41%
2. Very Good	25	100	21.19%



Sir Shantilal Badjate Charitable Trust, Nagpur
 S. B. Jain Institute of Technology, Management & Research, Nagpur
 (Approved by AICTE, An Autonomous Institute) Affiliated to R. T. M. Nagpur University
 Department of Computer Science and Engineering

7. Library Facility	Responses	Weighted Responses	Percent
3. Good	54	162	45.76%
4. Fair	15	30	12.71%
5. Poor	7	7	5.93%
Total	118	384	65.08%

8. Sports Facility	Responses	Weighted Responses	Percent
1. Excellent	10	50	8.47%
2. Very Good	16	64	13.56%
3. Good	47	141	39.83%
4. Fair	18	36	15.25%
5. Poor	27	27	22.88%
Total	118	318	53.90%

9. Canteen Facility	Responses	Weighted Responses	Percent
1. Excellent	8	40	6.78%
2. Very Good	31	124	26.27%
3. Good	45	135	38.14%
4. Fair	17	34	14.41%
5. Poor	17	17	14.41%
Total	118	350	59.32%

10. Transport Facility	Responses	Weighted Responses	Percent
1. Excellent	13	65	11.02%
2. Very Good	25	100	21.19%
3. Good	48	144	40.68%
4. Fair	15	30	12.71%
5. Poor	17	17	14.41%
Total	118	356	60.34%

11. Internet Facility	Responses	Weighted Responses	Percent
1. Excellent	10	50	8.47%
2. Very Good	15	60	12.71%
3. Good	45	135	38.14%
4. Fair	24	48	20.34%
5. Poor	24	24	20.34%
Total	118	317	53.73%

12. Housekeeping	Responses	Weighted Responses	Percent
1. Excellent	12	60	10.17%
2. Very Good	25	100	21.19%
3. Good	51	153	43.22%
4. Fair	11	22	9.32%
5. Poor	19	19	16.10%
Total	118	354	60.00%



Summary Report

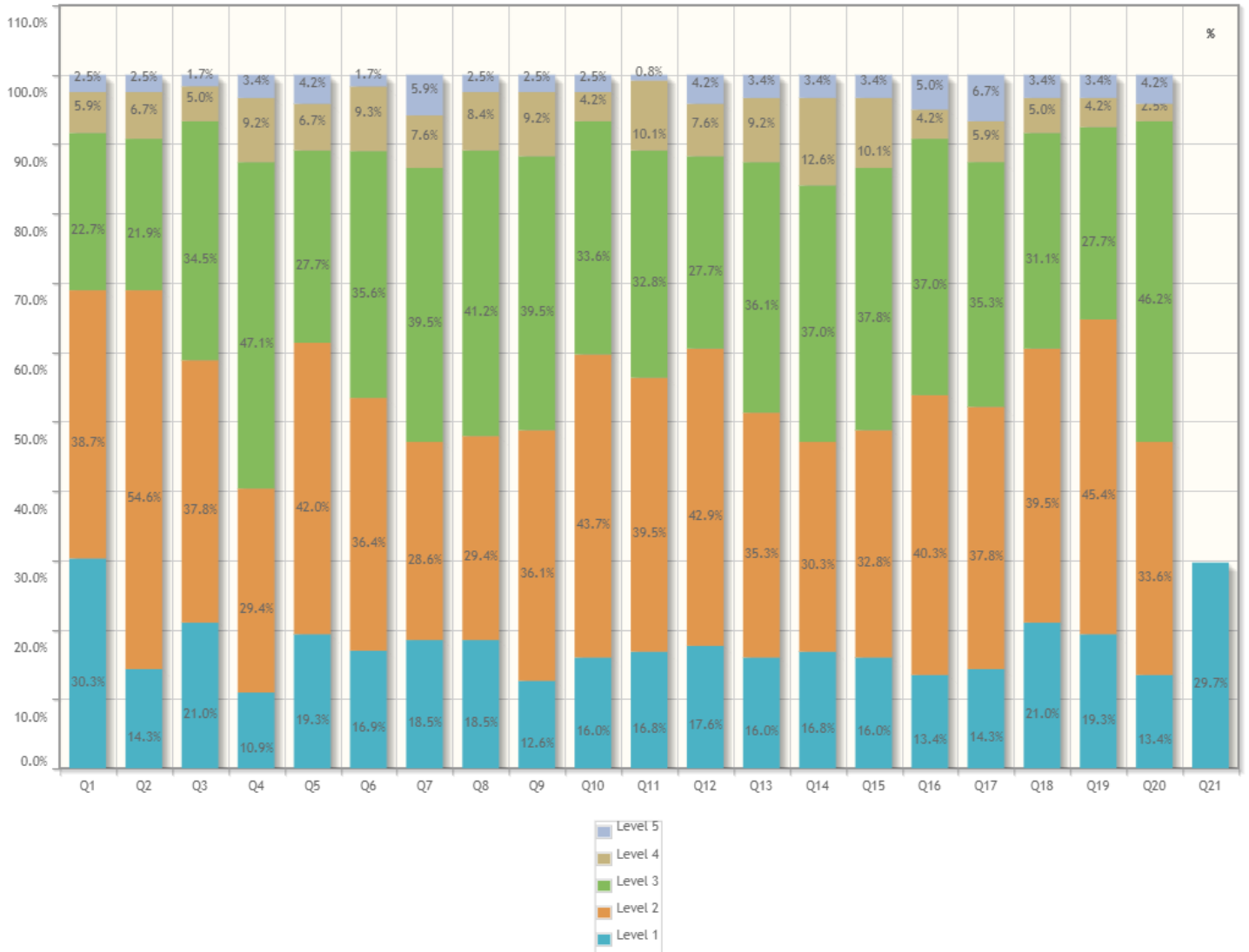
Number of people Responded / Total number of Responders is **118 / 140** People.

Questions	Total Response Count	Weighted Response Percent
Adequacy of Laboratory facilities (Number of set-ups/ equipments /tools etc.)	367	62.20%
Mechanism and approach to provide exposure to external world through Internships, Field Visits, Guest Lectures, Expert Talks etc.	367	62.20%
Infrastructure (Furniture/Black Board / Illumination/Ventilation etc.)	359	60.85%
Mechanism and approach to deal with students/parents grievances	365	61.86%
Students guidance and mentoring facilities	354	60.00%
Support for co-curricular and extra-curricular activities	348	58.98%
Library Facility	384	65.08%
Sports Facility	318	53.90%
Canteen Facility	350	59.32%
Transport Facility	356	60.34%
Internet Facility	317	53.73%
Housekeeping	354	60.00%
First Aid Facility	324	54.92%
Security Facility	358	60.68%
Total Feedback	4921	59.58%

Survey Details - Detailed & Summary Report

Survey: 2022-23 ODD V SSS TLP	Survey Type: Fresh Survey
Survey For: Facility Feedback	Program: B.Tech. Computer Science and Engineering in Computer Science and Engineering

Detailed Report



1. How much of the syllabus was covered in the class?	Responses	Weighted Responses	Percent
1. 85 to 100%	36	180	30.25%
2. 70 to 84%	46	184	38.66%
3. 55 to 69%	27	81	22.69%
4. 30 to 54%	7	14	5.88%
5. Below 30%	3	3	2.52%
Total	119	462	77.65%



Sir Shantilal Badjate Charitable Trust, Nagpur
 S. B. Jain Institute of Technology, Management & Research, Nagpur
 (Approved by AICTE, An Autonomous Institute) Affiliated to R. T. M. Nagpur University
 Department of Computer Science and Engineering

7. The institute takes active interest in promoting internship opportunities for students.	Responses	Weighted Responses	Percent
5. Never	7	7	5.88%
Total	119	412	69.24%

8. The teaching and mentoring process in your institution facilitates you in cognitive, social and emotional growth.	Responses	Weighted Responses	Percent
1. Significantly	22	110	18.49%
2. Very well	35	140	29.41%
3. Moderately	49	147	41.18%
4. Marginally	10	20	8.40%
5. Not at all	3	3	2.52%
Total	119	420	70.59%

9. The institution provides multiple opportunities to learn and grow.	Responses	Weighted Responses	Percent
1. Strongly agree	15	75	12.61%
2. Agree	43	172	36.13%
3. Neutral	47	141	39.50%
4. Disagree	11	22	9.24%
5. Strongly disagree	3	3	2.52%
Total	119	413	69.41%

10. Teachers inform you about your expected competencies, course outcomes and programme outcomes and review the course syllabus in the class.	Responses	Weighted Responses	Percent
1. Every time	19	95	15.97%
2. Usually	52	208	43.70%
3. Occasionally/Sometimes	40	120	33.61%
4. Rarely	5	10	4.20%
5. Never	3	3	2.52%
Total	119	436	73.28%

11. Your mentor does a necessary follow-up with an assigned task to you	Responses	Weighted Responses	Percent
1. Every time	20	100	16.81%
2. Usually	47	188	39.50%
3. Occasionally/Sometimes	39	117	32.77%
4. Rarely	12	24	10.08%
5. I don't have a mentor	1	1	0.84%
Total	119	430	72.27%

12. The teachers illustrate the concepts through examples and applications.	Responses	Weighted Responses	Percent
1. Every time	21	105	17.65%
2. Usually	51	204	42.86%
3. Occasionally/Sometimes	33	99	27.73%
4. Rarely	9	18	7.56%
5. Never	5	5	4.20%



Sir Shantilal Badjate Charitable Trust, Nagpur
 S. B. Jain Institute of Technology, Management & Research, Nagpur
 (Approved by AICTE, An Autonomous Institute) Affiliated to R. T. M. Nagpur University
 Department of Computer Science and Engineering

12. The teachers illustrate the concepts through examples and applications.	Responses	Weighted Responses	Percent
Total	119	431	72.44%

13. The teachers identify your strengths and encourage you with providing right level of challenges.	Responses	Weighted Responses	Percent
1. Fully	19	95	15.97%
2. Reasonably	42	168	35.29%
3. Partially	43	129	36.13%
4. Slightly	11	22	9.24%
5. Unable to	4	4	3.36%
Total	119	418	70.25%

14. Teachers are able to identify your weaknesses and help you to overcome them.	Responses	Weighted Responses	Percent
1. Every time	20	100	16.81%
2. Usually	36	144	30.25%
3. Occasionally/Sometimes	44	132	36.97%
4. Rarely	15	30	12.61%
5. Never	4	4	3.36%
Total	119	410	68.91%

15. The institution makes effort to engage students in the monitoring, review and continuous quality improvement of the teaching learning process.	Responses	Weighted Responses	Percent
1. Strongly agree	19	95	15.97%
2. Agree	39	156	32.77%
3. Neutral	45	135	37.82%
4. Disagree	12	24	10.08%
5. Strongly disagree	4	4	3.36%
Total	119	414	69.58%

16. The institute/ teachers use student centric methods, such as experiential learning, participative learning and problem solving methodologies for enhancing learning experiences.	Responses	Weighted Responses	Percent
1. To a great extent	16	80	13.45%
2. Moderate	48	192	40.34%
3. Some what	44	132	36.97%
4. Very little	5	10	4.20%
5. Not at all	6	6	5.04%
Total	119	420	70.59%

17. Teachers encourage you to participate in extracurricular activities.	Responses	Weighted Responses	Percent
1. Strongly agree	17	85	14.29%
2. Agree	45	180	37.82%
3. Neutral	42	126	35.29%
4. Disagree	7	14	5.88%
5. Strongly disagree	8	8	6.72%



Sir Shantilal Badjate Charitable Trust, Nagpur
 S. B. Jain Institute of Technology, Management & Research, Nagpur
 (Approved by AICTE, An Autonomous Institute) Affiliated to R. T. M. Nagpur University
 Department of Computer Science and Engineering

17. Teachers encourage you to participate in extracurricular activities.	Responses	Weighted Responses	Percent
Total	119	413	69.41%

18. Efforts are made by the institute/ teachers to inculcate soft skills, life skills and employability skills to make you ready for the world of work.	Responses	Weighted Responses	Percent
1. To a great extent	25	125	21.01%
2. Moderate	47	188	39.50%
3. Some what	37	111	31.09%
4. Very little	6	12	5.04%
5. Not at all	4	4	3.36%
Total	119	440	73.95%

19. What percentage of teachers uses ICT tools such as PPTs, Multimedia, animations, etc. while teaching	Responses	Weighted Responses	Percent
1. Above 90%	23	115	19.33%
2. 70 - 89%	54	216	45.38%
3. 50 - 69%	33	99	27.73%
4. 30 - 49%	5	10	4.20%
5. Below 29%	4	4	3.36%
Total	119	444	74.62%

20. The overall quality of teaching-learning process in your institute is very good.	Responses	Weighted Responses	Percent
1. Strongly agree	16	80	13.45%
2. Agree	40	160	33.61%
3. Neutral	55	165	46.22%
4. Disagree	3	6	2.52%
5. Strongly disagree	5	5	4.20%
Total	119	416	69.92%

21. Give three observation / suggestions to improve the overall teaching - learning experience in your institution. (Observation/Suggestion may also be a review of any course content of the syllabus/ Content you would have wished to learn).	Responses	Weighted Responses	Percent
1. Write Your answer in comment box	35	175	29.66%
Total	118	453	76.78%

Summary Report

Number of people Responded / Total number of Responders is **119 / 140** People.

Questions	Total Response Count	Weighted Response Percent
How much of the syllabus was covered in the class?	462	77.65%
How well did the teachers prepare for the classes?	442	74.29%
How well were the teachers able to communicate?	442	74.29%
The teacher's approach to teaching can best be described as	399	67.06%
Fairness of the internal evaluation process by the teachers	435	73.11%
Was your performance in assignments discussed with you?	422	71.53%
The institute takes active interest in promoting internship opportunities for students.	412	69.24%
The teaching and mentoring process in your institution facilitates you in cognitive, social and emotional growth.	420	70.59%
The institution provides multiple opportunities to learn and grow.	413	69.41%
Teachers inform you about your expected competencies, course outcomes and programme outcomes and review the course syllabus in the class.	436	73.28%
Your mentor does a necessary follow-up with an assigned task to you	430	72.27%
The teachers illustrate the concepts through examples and applications.	431	72.44%
The teachers identify your strengths and encourage you with providing right level of challenges.	418	70.25%
Teachers are able to identify your weaknesses and help you to overcome them.	410	68.91%
The institution makes effort to engage students in the monitoring, review and continuous quality improvement of the teaching learning process.	414	69.58%
The institute/ teachers use student centric methods, such as experiential learning, participative learning and problem solving methodologies for enhancing learning experiences.	420	70.59%
Teachers encourage you to participate in extracurricular activities.	413	69.41%
Efforts are made by the institute/ teachers to inculcate soft skills, life skills and employability skills to make you ready for the world of work.	440	73.95%



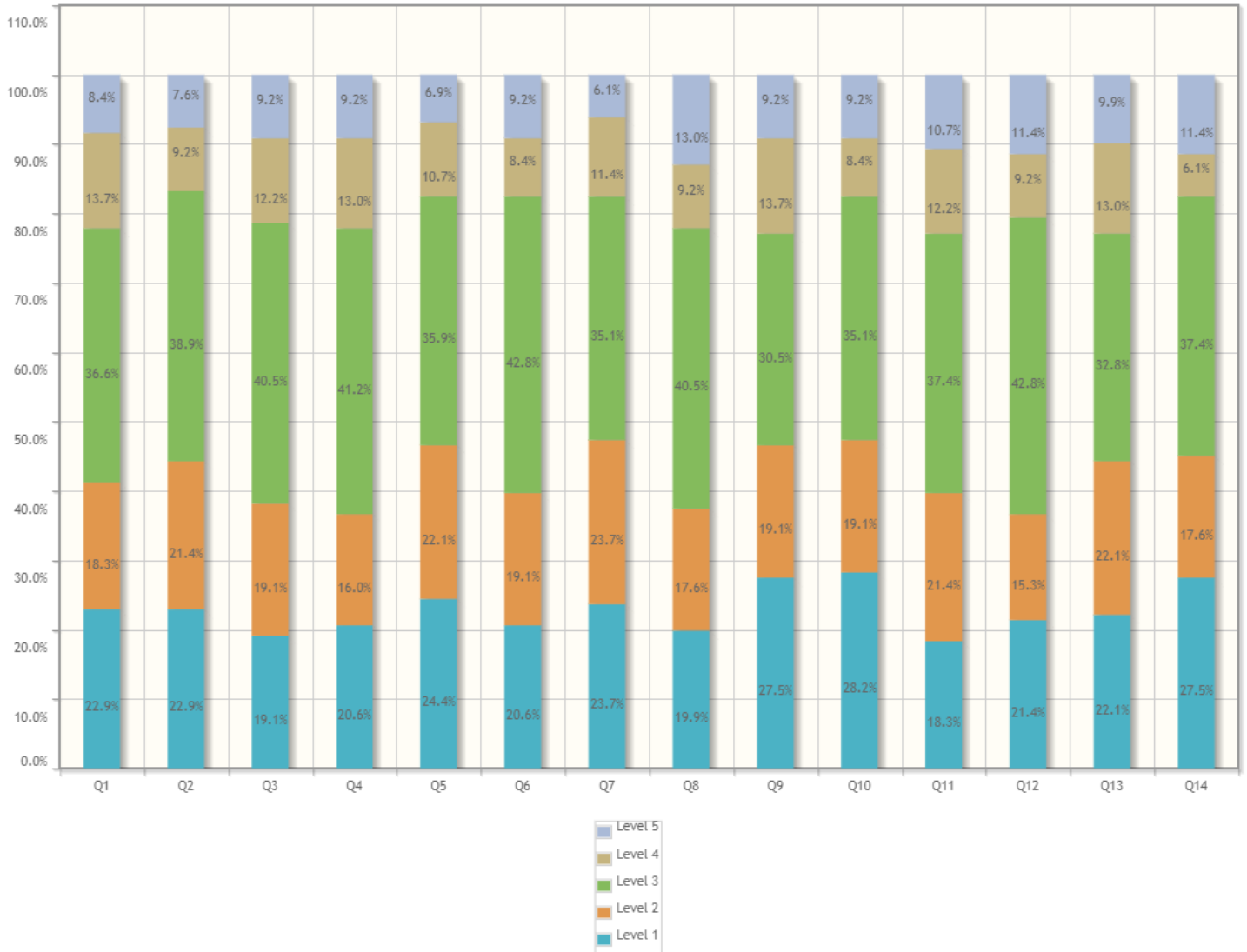
Sir Shantilal Badjate Charitable Trust, Nagpur
S. B. Jain Institute of Technology, Management & Research, Nagpur
(Approved by AICTE, An Autonomous Institute) Affiliated to R. T. M. Nagpur University
Department of Computer Science and Engineering

Questions	Total Response Count	Weighted Response Percent
What percentage of teachers uses ICT tools such as PPTs, Multimedia, animations, etc. while teaching	444	74.62%
The overall quality of teaching-learning process in your institute is very good.	416	69.92%
Give three observation / suggestions to improve the overall teaching - learning experience in your institution. (Observation/Suggestion may also be a review of any course content of the syllabus/ Content you would have wished to learn).	453	76.78%
Total Feedback	8972	71.86%

Survey Details - Detailed & Summary Report

Survey: 22-23 EVEN VI Sem IFS	Survey Type: Fresh Survey
Survey For: Facility Feedback	Program: B.Tech. Computer Science and Engineering in Computer Science and Engineering

Detailed Report



1. Adequacy of Laboratory facilities (Number of set-ups/ equipments /tools etc.)	Responses	Weighted Responses	Percent
1. Excellent	30	150	22.90%
2. Very Good	24	96	18.32%
3. Good	48	144	36.64%
4. Fair	18	36	13.74%
5. Poor	11	11	8.40%
Total	131	437	66.72%



Sir Shantilal Badjate Charitable Trust, Nagpur
 S. B. Jain Institute of Technology, Management & Research, Nagpur
 (Approved by AICTE, An Autonomous Institute) Affiliated to R. T. M. Nagpur University
 Department of Computer Science and Engineering

2. Mechanism and approach to provide exposure to external world through Internships, Field Visits, Guest Lectures, Expert Talks etc.	Responses	Weighted Responses	Percent
1. Excellent	30	150	22.90%
2. Very Good	28	112	21.37%
3. Good	51	153	38.93%
4. Fair	12	24	9.16%
5. Poor	10	10	7.63%
Total	131	449	68.55%

3. Infrastructure (Furniture/Black Board / Illumination/Ventilation etc.)	Responses	Weighted Responses	Percent
1. Excellent	25	125	19.08%
2. Very Good	25	100	19.08%
3. Good	53	159	40.46%
4. Fair	16	32	12.21%
5. Poor	12	12	9.16%
Total	131	428	65.34%

4. Mechanism and approach to deal with students/parents grievances	Responses	Weighted Responses	Percent
1. Excellent	27	135	20.61%
2. Very Good	21	84	16.03%
3. Good	54	162	41.22%
4. Fair	17	34	12.98%
5. Poor	12	12	9.16%
Total	131	427	65.19%

5. Students guidance and mentoring facilities	Responses	Weighted Responses	Percent
1. Excellent	32	160	24.43%
2. Very Good	29	116	22.14%
3. Good	47	141	35.88%
4. Fair	14	28	10.69%
5. Poor	9	9	6.87%
Total	131	454	69.31%

6. Support for co-curricular and extra-curricular activities	Responses	Weighted Responses	Percent
1. Excellent	27	135	20.61%
2. Very Good	25	100	19.08%
3. Good	56	168	42.75%
4. Fair	11	22	8.40%
5. Poor	12	12	9.16%
Total	131	437	66.72%

7. Library Facility	Responses	Weighted Responses	Percent
1. Excellent	31	155	23.66%
2. Very Good	31	124	23.66%



Summary Report

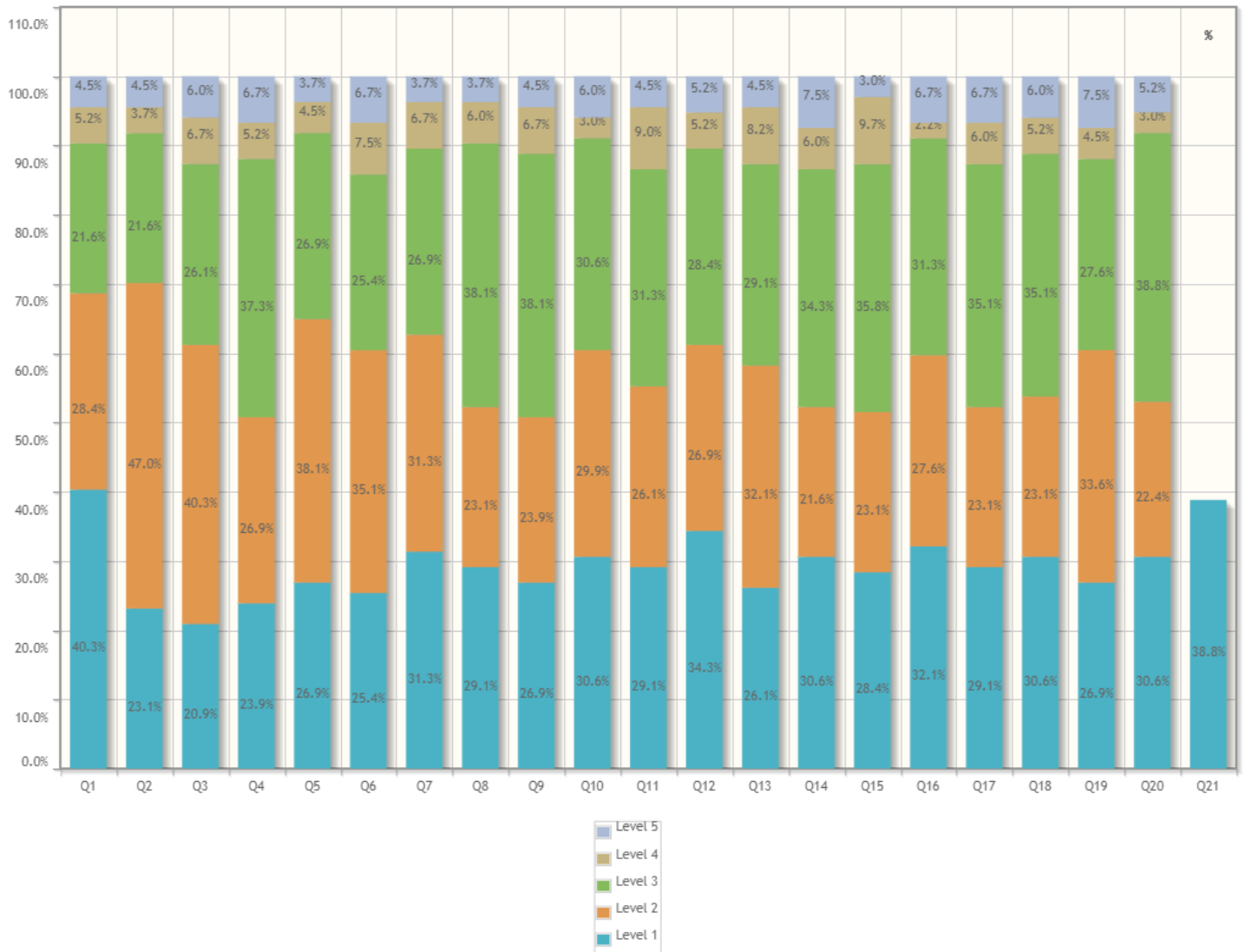
Number of people Responded / Total number of Responders is **131 / 140** People.

Questions	Total Response Count	Weighted Response Percent
Adequacy of Laboratory facilities (Number of set-ups/ equipments /tools etc.)	437	66.72%
Mechanism and approach to provide exposure to external world through Internships, Field Visits, Guest Lectures, Expert Talks etc.	449	68.55%
Infrastructure (Furniture/Black Board / Illumination/Ventilation etc.)	428	65.34%
Mechanism and approach to deal with students/parents grievances	427	65.19%
Students guidance and mentoring facilities	454	69.31%
Support for co-curricular and extra-curricular activities	437	66.72%
Library Facility	455	69.47%
Sports Facility	422	64.43%
Canteen Facility	448	68.40%
Transport Facility	457	69.77%
Internet Facility	425	64.89%
Housekeeping	427	65.19%
First Aid Facility	437	66.72%
Security Facility	450	68.70%
Total Feedback	6153	67.10%

Survey Details - Detailed & Summary Report

Survey: 22-23 EVEN VI Sem SSS TLP	Survey Type: Fresh Survey
Survey For: Facility Feedback	Program: B.Tech. Computer Science and Engineering in Computer Science and Engineering

Detailed Report



1. How much of the syllabus was covered in the class?	Responses	Weighted Responses	Percent
1. 85 to 100%	54	270	40.30%
2. 70 to 84%	38	152	28.36%
3. 55 to 69%	29	87	21.64%
4. 30 to 54%	7	14	5.22%
5. Below 30%	6	6	4.48%
Total	134	529	78.96%



Sir Shantilal Badjate Charitable Trust, Nagpur
 S. B. Jain Institute of Technology, Management & Research, Nagpur
 (Approved by AICTE, An Autonomous Institute) Affiliated to R. T. M. Nagpur University
 Department of Computer Science and Engineering

12. The teachers illustrate the concepts through examples and applications.	Responses	Weighted Responses	Percent
Total	134	509	75.97%

13. The teachers identify your strengths and encourage you with providing right level of challenges.	Responses	Weighted Responses	Percent
1. Fully	35	175	26.12%
2. Reasonably	43	172	32.09%
3. Partially	39	117	29.10%
4. Slightly	11	22	8.21%
5. Unable to	6	6	4.48%
Total	134	492	73.43%

14. Teachers are able to identify your weaknesses and help you to overcome them.	Responses	Weighted Responses	Percent
1. Every time	41	205	30.60%
2. Usually	29	116	21.64%
3. Occasionally/Sometimes	46	138	34.33%
4. Rarely	8	16	5.97%
5. Never	10	10	7.46%
Total	134	485	72.39%

15. The institution makes effort to engage students in the monitoring, review and continuous quality improvement of the teaching learning process.	Responses	Weighted Responses	Percent
1. Strongly agree	38	190	28.36%
2. Agree	31	124	23.13%
3. Neutral	48	144	35.82%
4. Disagree	13	26	9.70%
5. Strongly disagree	4	4	2.99%
Total	134	488	72.84%

16. The institute/ teachers use student centric methods, such as experiential learning, participative learning and problem solving methodologies for enhancing learning experiences.	Responses	Weighted Responses	Percent
1. To a great extent	43	215	32.09%
2. Moderate	37	148	27.61%
3. Some what	42	126	31.34%
4. Very little	3	6	2.24%
5. Not at all	9	9	6.72%
Total	134	504	75.22%

17. Teachers encourage you to participate in extracurricular activities.	Responses	Weighted Responses	Percent
1. Strongly agree	39	195	29.10%
2. Agree	31	124	23.13%
3. Neutral	47	141	35.07%
4. Disagree	8	16	5.97%
5. Strongly disagree	9	9	6.72%

Summary Report

Number of people Responded / Total number of Responders is **134 / 140** People.

Questions	Total Response Count	Weighted Response Percent
How much of the syllabus was covered in the class?	529	78.96%
How well did the teachers prepare for the classes?	510	76.12%
How well were the teachers able to communicate?	487	72.69%
The teacher's approach to teaching can best be described as	477	71.19%
Fairness of the internal evaluation process by the teachers	509	75.97%
Was your performance in assignments discussed with you?	489	72.99%
The institute takes active interest in promoting internship opportunities for students.	509	75.97%
The teaching and mentoring process in your institution facilitates you in cognitive, social and emotional growth.	493	73.58%
The institution provides multiple opportunities to learn and grow.	485	72.39%
Teachers inform you about your expected competencies, course outcomes and programme outcomes and review the course syllabus in the class.	504	75.22%
Your mentor does a necessary follow-up with an assigned task to you	491	73.28%
The teachers illustrate the concepts through examples and applications.	509	75.97%
The teachers identify your strengths and encourage you with providing right level of challenges.	492	73.43%
Teachers are able to identify your weaknesses and help you to overcome them.	485	72.39%
The institution makes effort to engage students in the monitoring, review and continuous quality improvement of the teaching learning process.	488	72.84%
The institute/ teachers use student centric methods, such as experiential learning, participative learning and problem solving methodologies for enhancing learning experiences.	504	75.22%
Teachers encourage you to participate in extracurricular activities.	485	72.39%
Efforts are made by the institute/ teachers to inculcate soft skills, life skills and employability skills to make you ready for the world of work.	492	73.43%



Sir Shantilal Badjate Charitable Trust, Nagpur
S. B. Jain Institute of Technology, Management & Research, Nagpur
(Approved by AICTE, An Autonomous Institute) Affiliated to R. T. M. Nagpur University
Department of Computer Science and Engineering

Questions	Total Response Count	Weighted Response Percent
What percentage of teachers uses ICT tools such as PPTs, Multimedia, animations, etc. while teaching	493	73.58%
The overall quality of teaching-learning process in your institute is very good.	496	74.03%
Give three observation / suggestions to improve the overall teaching - learning experience in your institution. (Observation/Suggestion may also be a review of any course content of the syllabus/ Content you would have wished to learn).	530	79.10%
Total Feedback	10457	74.32%