

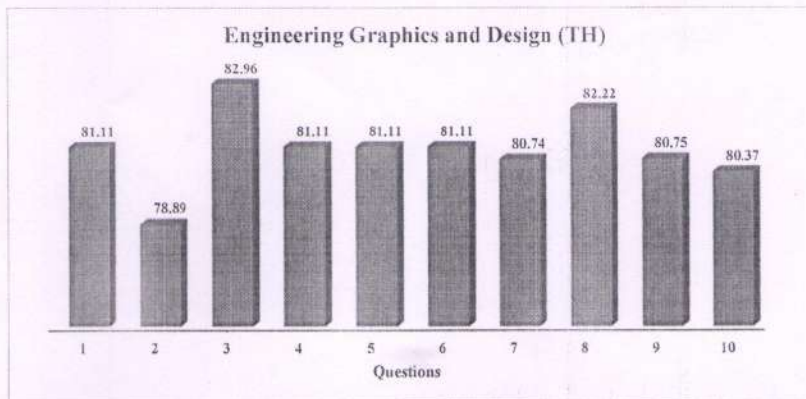
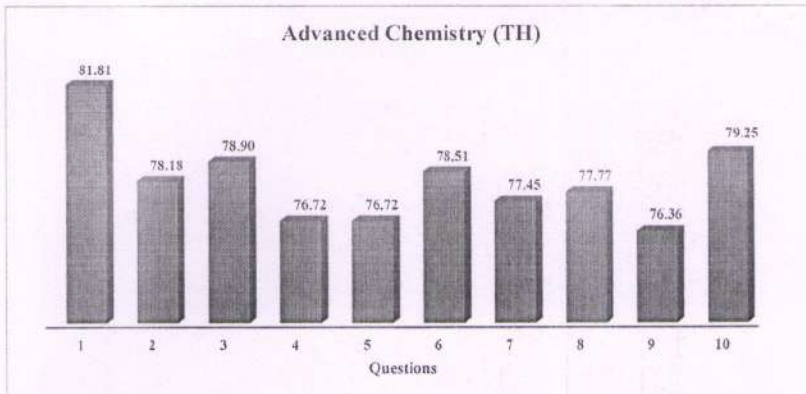
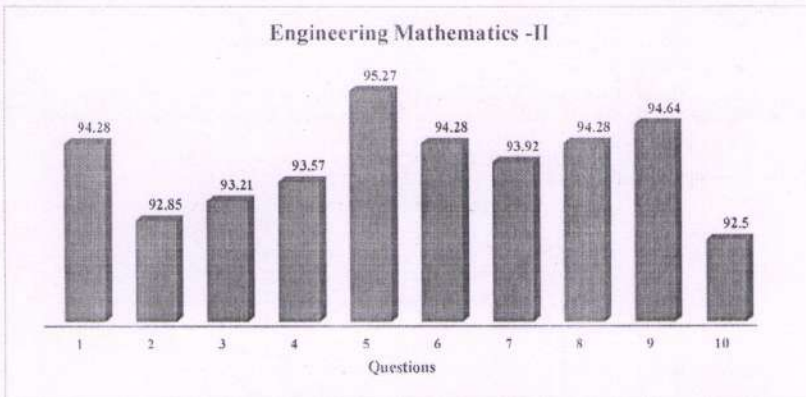


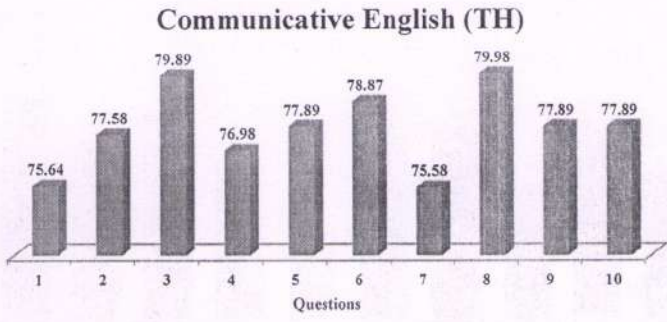
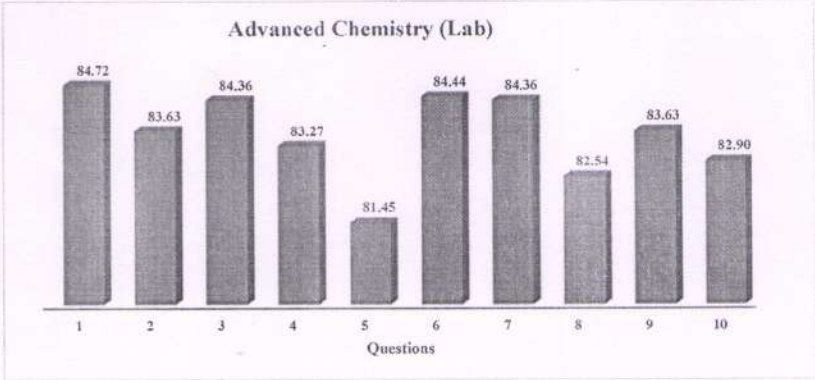
Teachers Feedback on Design of Syllabus

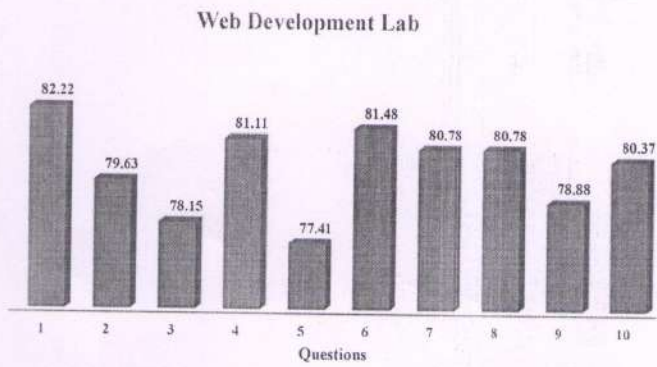
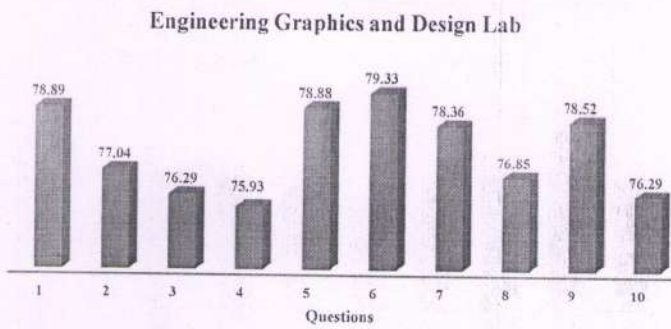
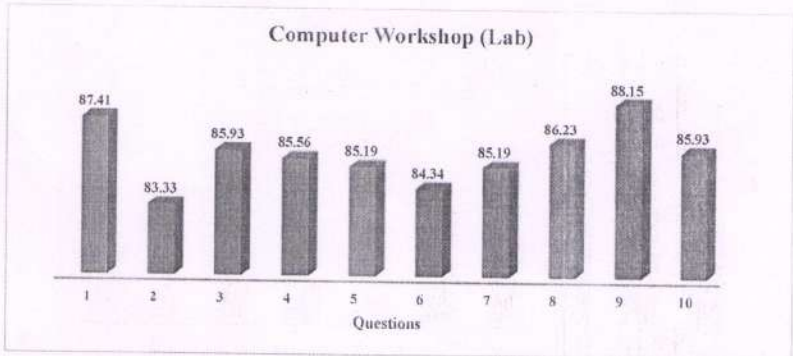
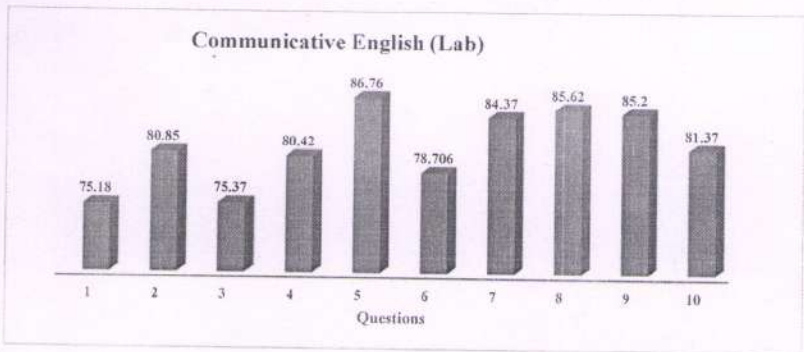
First Year /Second Semester (Group I)

Questions asked in Teachers Feedback on Design of Syllabus

1. Rate the depth of the syllabus for the course in relation to the competencies expected by industry/current global scenario
2. Rate the syllabus in terms of balance between theory and application
3. Rate the sequence of the units/modules in the course
4. Rate the distribution of credits to the course
5. Rate the adequateness of textbooks and reference books mentioned for the course
6. Rate the syllabus/ curriculum prospects for higher education/employability
7. Rate the scope of the course for internship/training/ research
8. Rate the level of social relevance in syllabus
9. Rate the syllabus content for the courses in terms of burden
10. Rate the contribution of the courses in terms of Professional core area









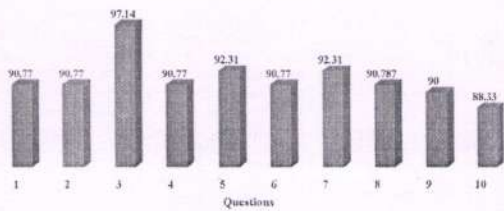
Teachers Feedback on Design of Syllabus

First Year /Second Semester (Group II)

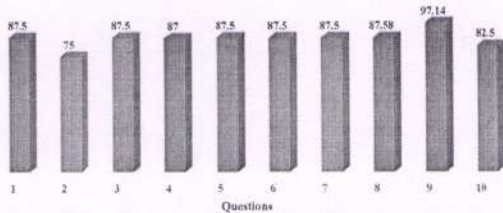
Questions asked in Teachers Feedback on Design of Syllabus

1. Rate the depth of the syllabus for the course in relation to the competencies expected by industry/current global scenarios
2. Rate the syllabus in terms of balance between theory and application
3. Rate the sequence of the units/modules in the course
4. Rate the distribution of credits to the course
5. Rate the adequateness of textbooks and reference books mentioned for the course
6. Rate the syllabus/ curriculum prospects for higher education/employability
7. Rate the scope of the course for internship/training/ research
8. Rate the level of social relevance in syllabus
9. Rate the syllabus content for the courses in terms of burden
10. Rate the contribution of the courses in terms of Professional core area

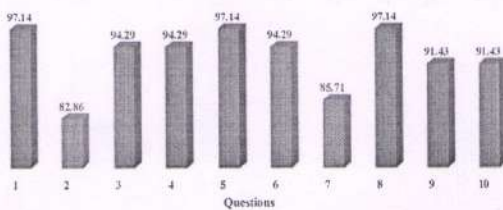
Engineering Mathematics -II



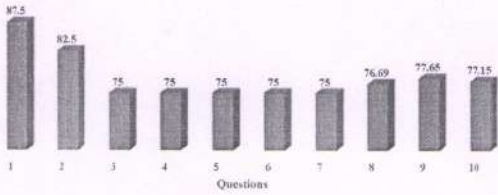
Engineering Physics



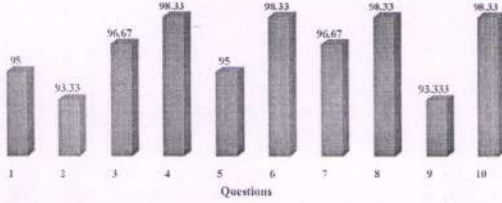
Engineering Mechanics



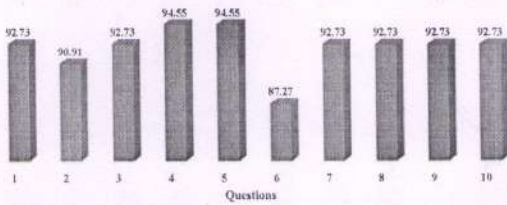
Workshop Practices



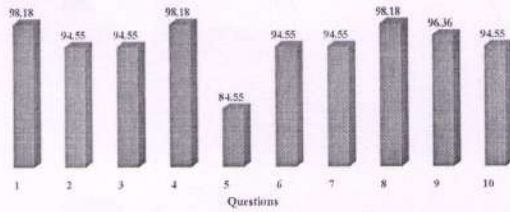
Environmental Studies



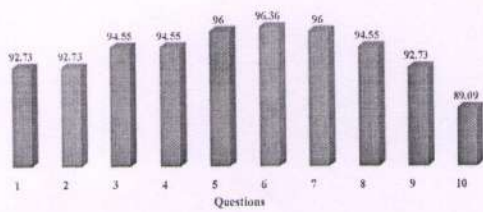
Indian Constitution



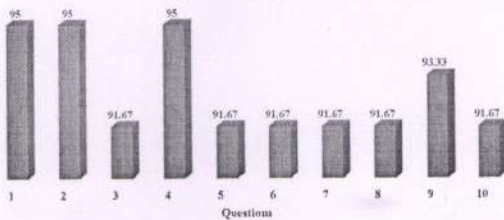
Electrical Engineering



Electrical Engineering Lab



Engineering Physics Lab





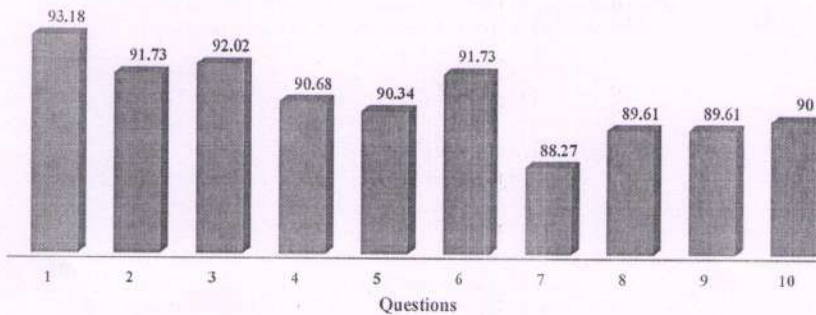
Teachers Feedback on Design of Syllabus

First Year /First Semester

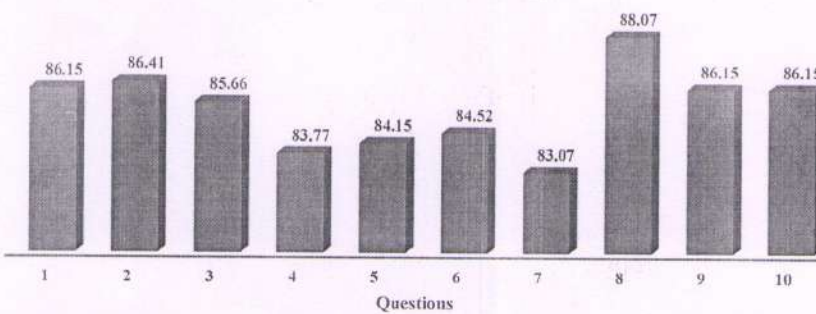
Questions asked in Teachers Feedback on Design of Syllabus

1. Rate the depth of the syllabus for the course in relation to the competencies expected by industry/current global scenarios
2. Rate the syllabus in terms of balance between theory and application
3. Rate the sequence of the units/modules in the course
4. Rate the distribution of credits to the course
5. Rate the adequateness of textbooks and reference books mentioned for the course
6. Rate the syllabus/ curriculum prospects for higher education/employability
7. Rate the scope of the course for internship/training/ research
8. Rate the level of social relevance in syllabus
9. Rate the syllabus content for the courses in terms of burden
10. Rate the contribution of the courses in terms of Professional core area

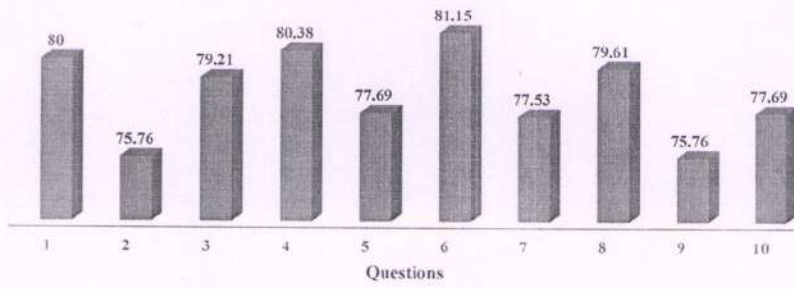
Engineering Mathematics -I



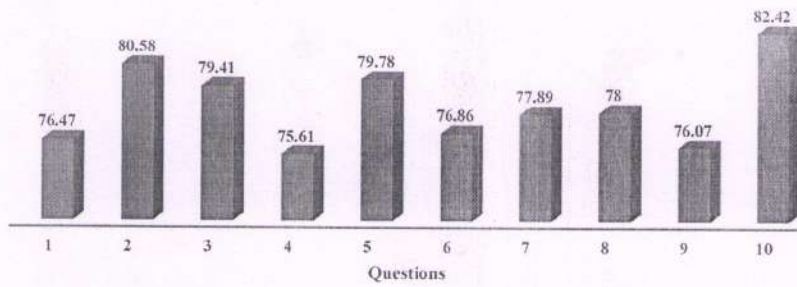
Modern Physics



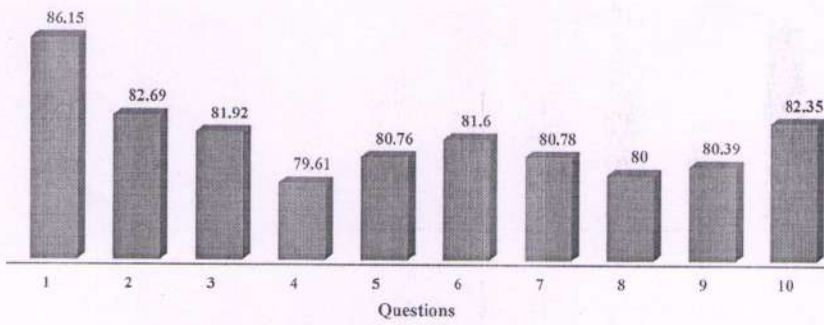
Engineering Chemistry



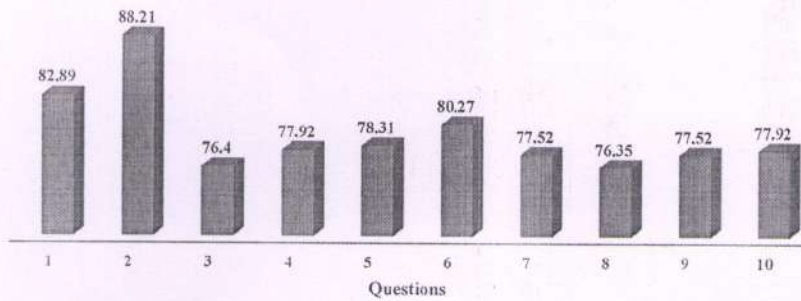
Communicative English



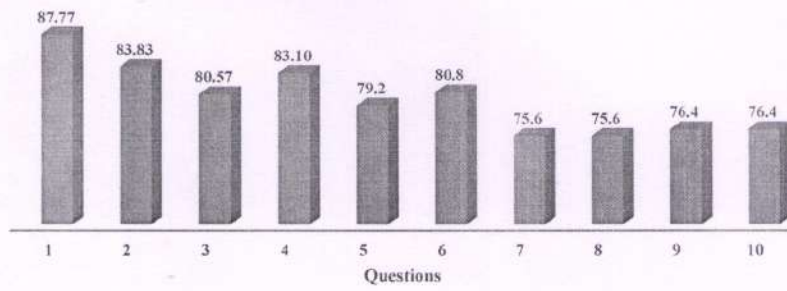
Environmental Studies



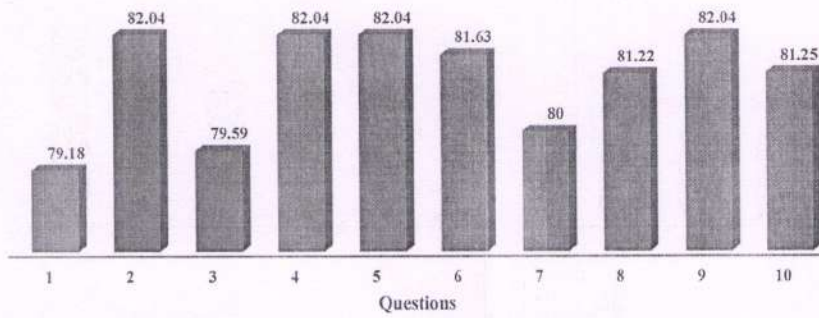
Indian Constitution



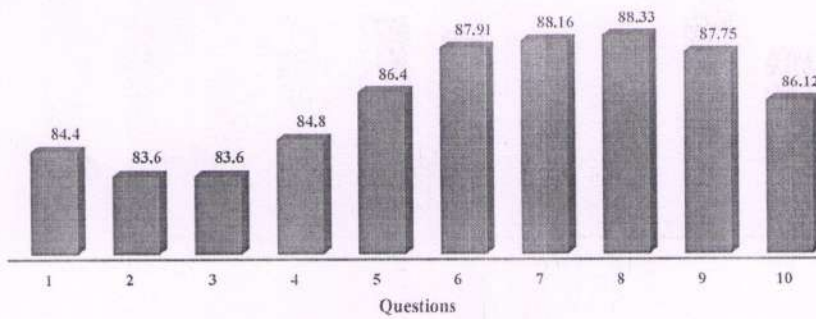
Electrical Engineering



Engineering Graphics and Design



Programming for Problem Solving



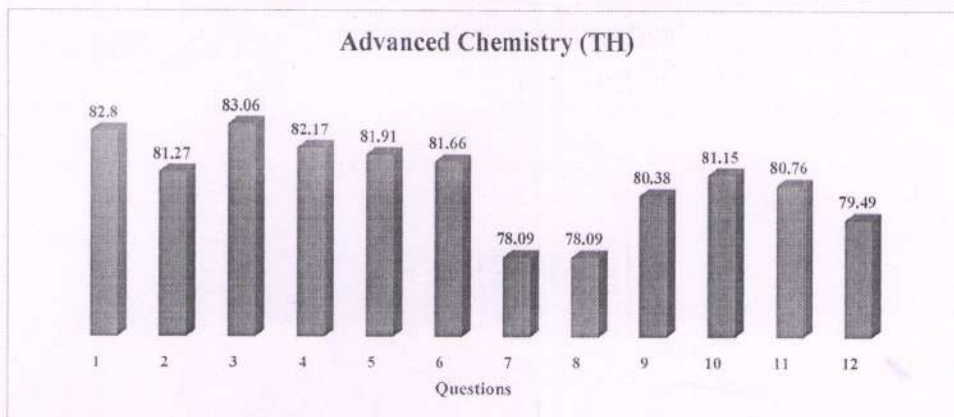
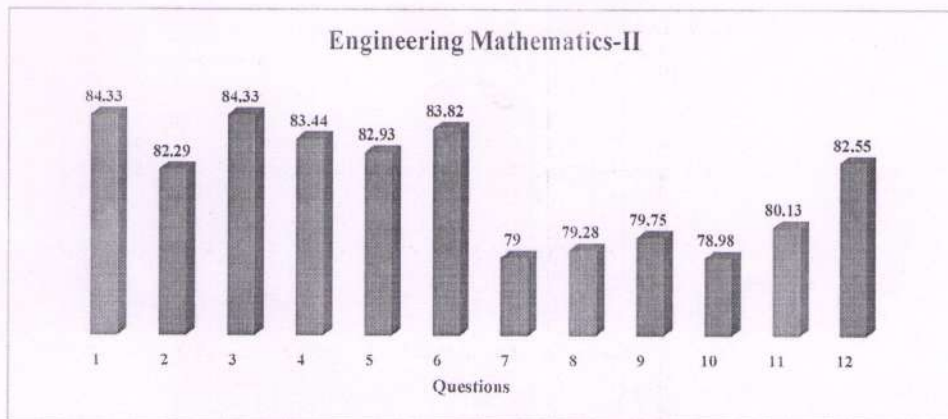


Student Feedback on Design of Syllabus

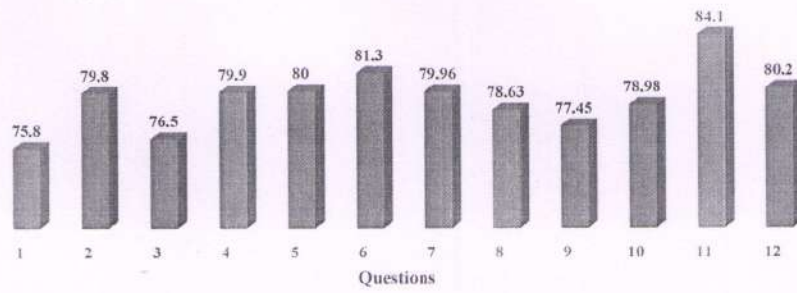
First Year /Second Semester (Group I)

Questions asked from students on Review of II Semester Syllabus

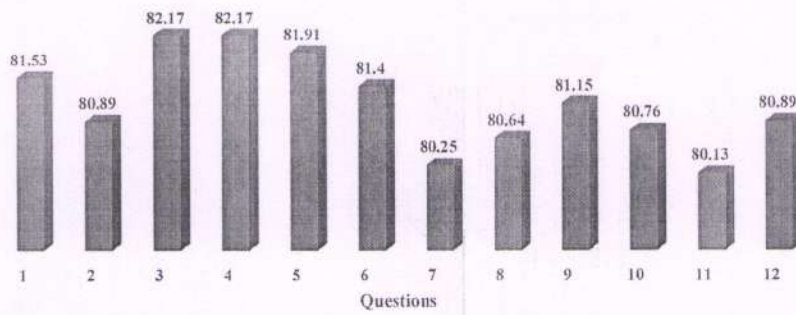
1. The course objectives were clear
2. The course workload was manageable
3. The Course was well organized
4. The syllabus has good balance between theory and application
5. I think the Course was well structured to achieve the learning outcomes (there was a good balance of lectures, tutorials, practical etc.)
6. Learning materials were relevant and useful
7. The provision of learning resources in the library was adequate and appropriate
8. Recommended reading Books etc. were relevant and appropriate
9. Curriculum has prospects for higher education/ employability
10. The syllabus / curriculum has social relevance
11. The Syllabus / Curriculum equip me for suitable placements in the job markets
12. The best features of the Course



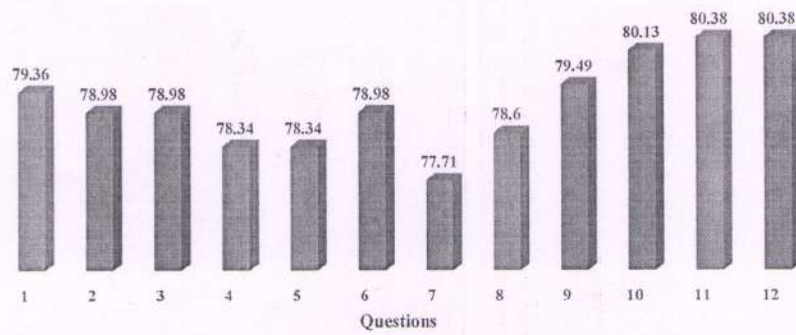
Engineering Graphics and Design (TH)



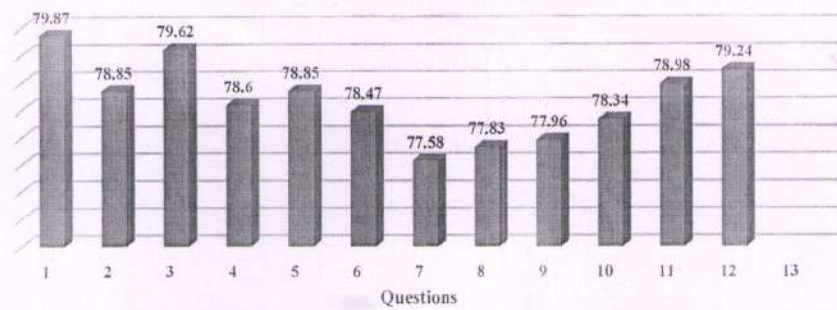
Advanced Chemistry Lab



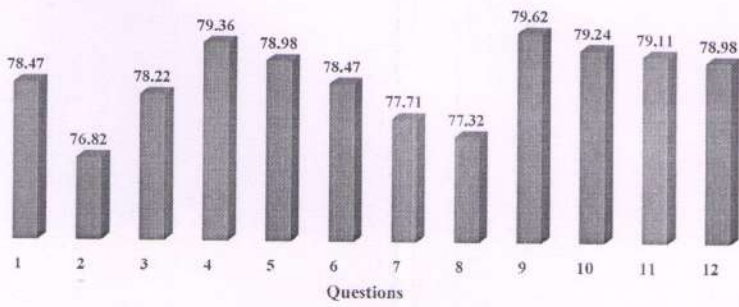
Communicative English (TH)



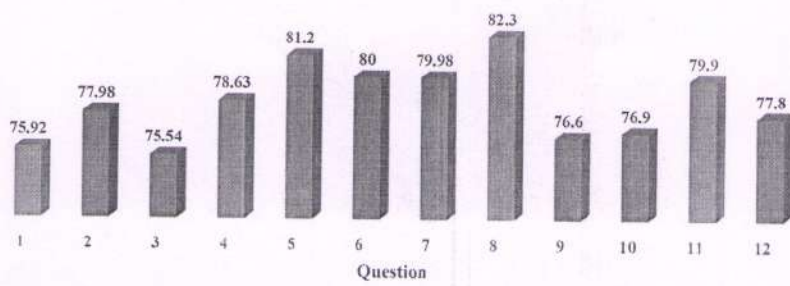
Communicative English Lab



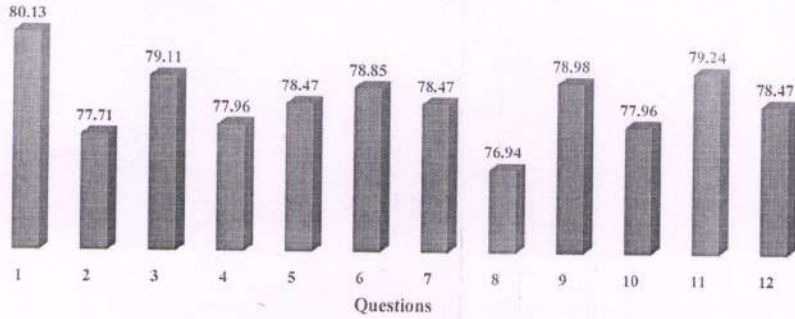
Computer Development Lab



Engineering Graphics and Design Lab



Web Development Lab





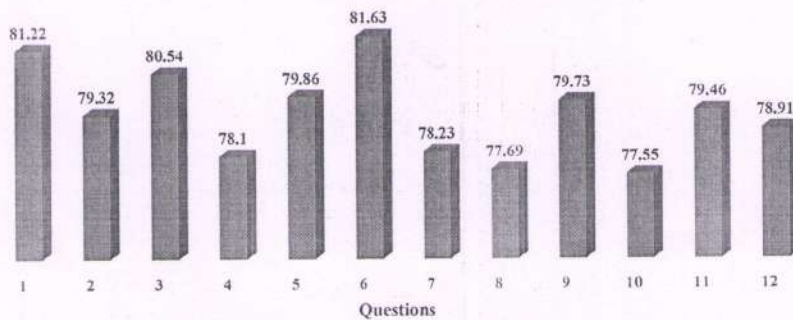
Student Feedback on Design of Syllabus

First Year /Second Semester (Group II)

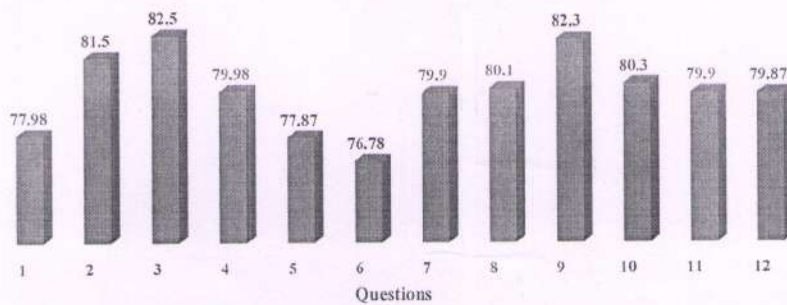
Questions asked from students on Review of II Semester Syllabus

1. The course objectives were clear
2. The course workload was manageable
3. The Course was well organized
4. The syllabus has good balance between theory and application
5. I think the Course was well structured to achieve the learning outcomes (there was a good balance of lectures, tutorials, practical etc.)
6. Learning materials were relevant and useful
7. The provision of learning resources in the library was adequate and appropriate
8. Recommended reading Books etc. were relevant and appropriate
9. Curriculum has prospects for higher education/ employability
10. The syllabus / curriculum has social relevance
11. The Syllabus / Curriculum equip me for suitable placements in the job markets
12. The best features of the Course

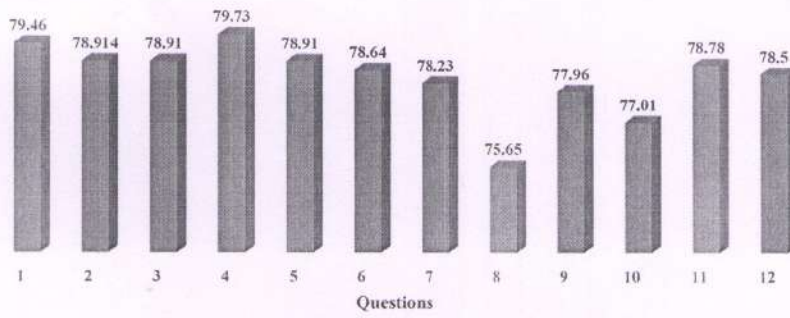
Engineering Mathematics -II



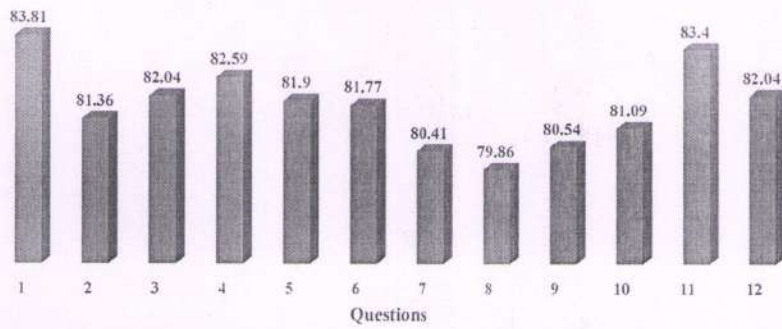
Engineering Physics (TH)



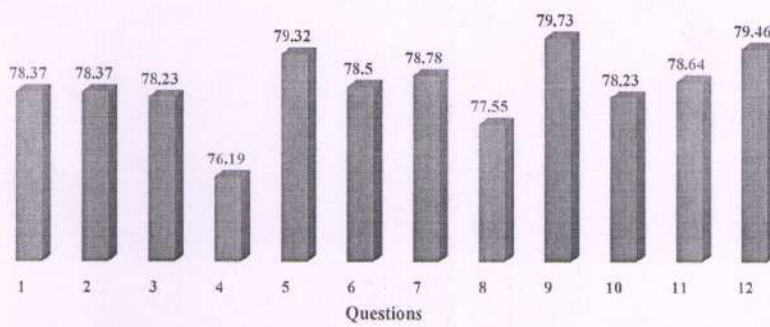
Engineering Mechanics



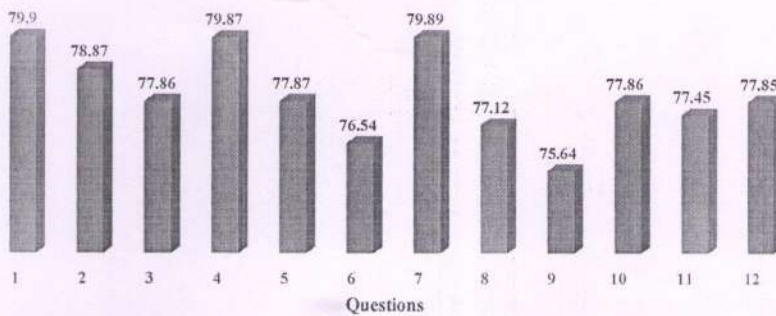
Workshop Practices



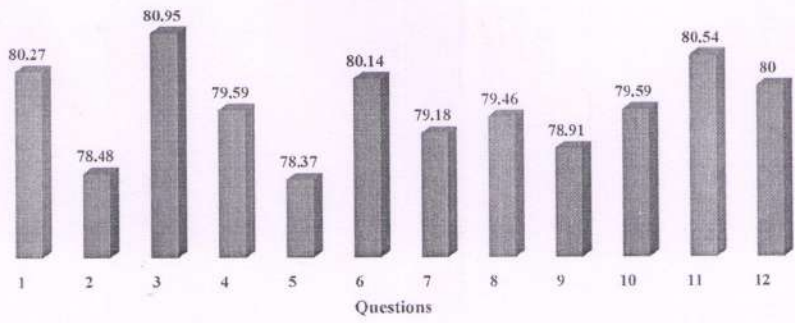
Environmental Studies



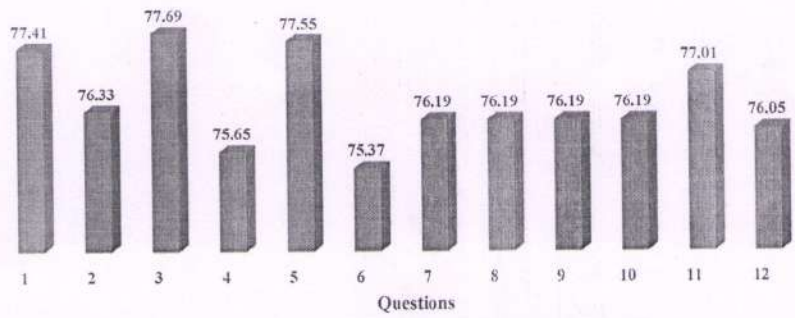
Indian Constitution



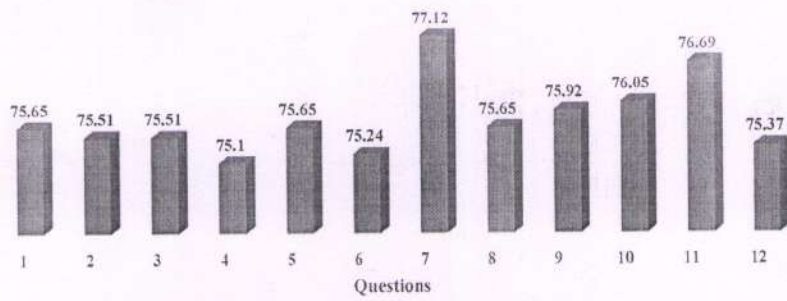
Electrical Engineering (TH)



Electrical Engineering Lab



Engineering Physics Lab





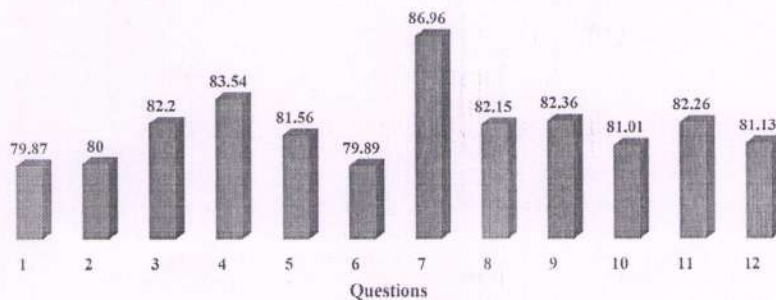
Student Feedback on Design of Syllabus

First Year /First Semester

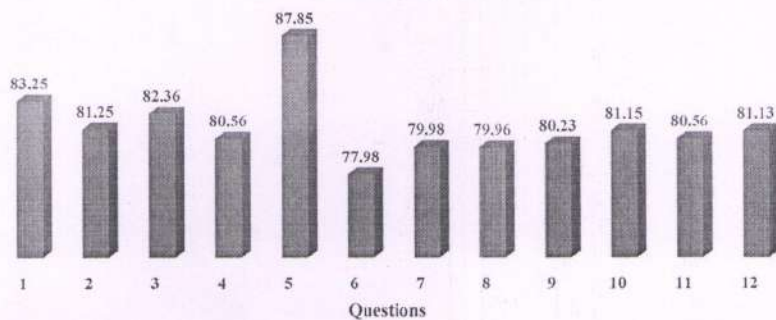
Questions asked from students on Review of I Semester Syllabus

1. The course objectives were clear
2. The course workload was manageable
3. The Course was well organized
4. The syllabus has good balance between theory and application
5. I think the Course was well structured to achieve the learning outcomes (there was a good balance of lectures, tutorials, practical etc.)
6. Learning materials were relevant and useful
7. The provision of learning resources in the library was adequate and appropriate
8. Recommended reading Books etc. were relevant and appropriate
9. Curriculum has prospects for higher education/ employability
10. The syllabus / curriculum has social relevance
11. The Syllabus / Curriculum equip me for suitable placements in the job markets

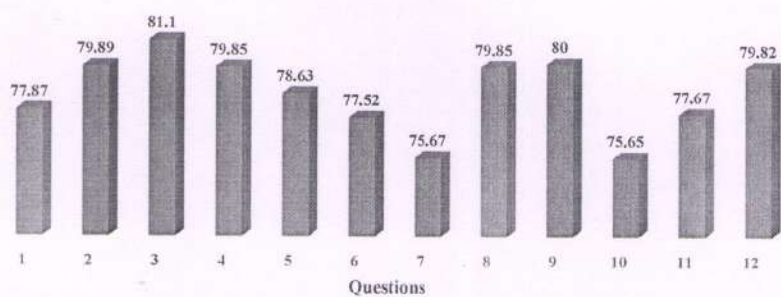
Engineering Mathematics-I



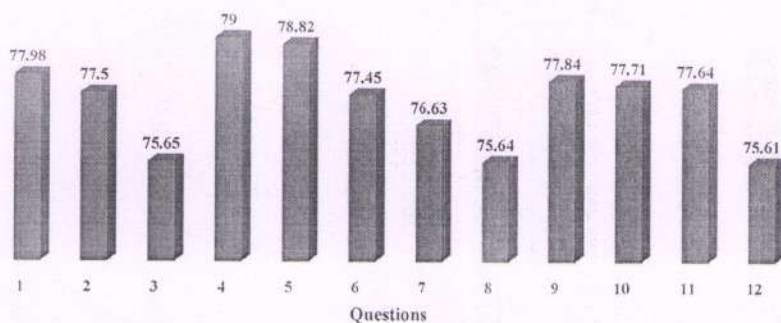
Modern Physics



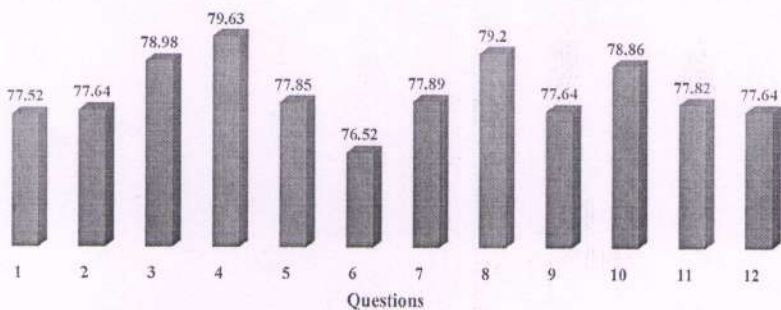
Engineering Chemistry



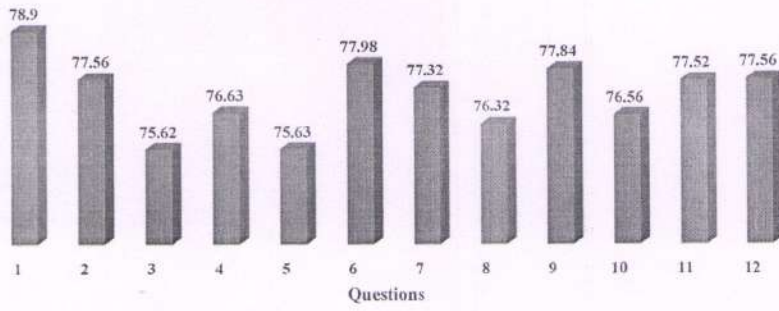
Communicative English



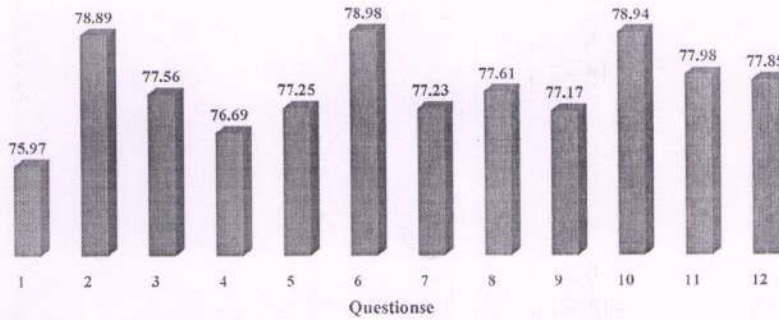
Environmental Studies



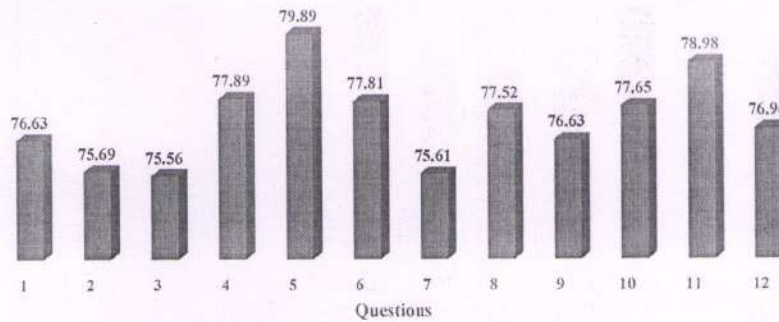
Indian Constitution



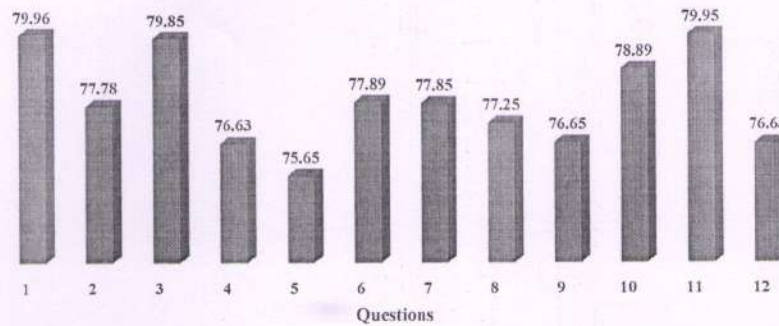
Electrical Engineering



Engineering Graphics and Design



Programming for Problem Solving



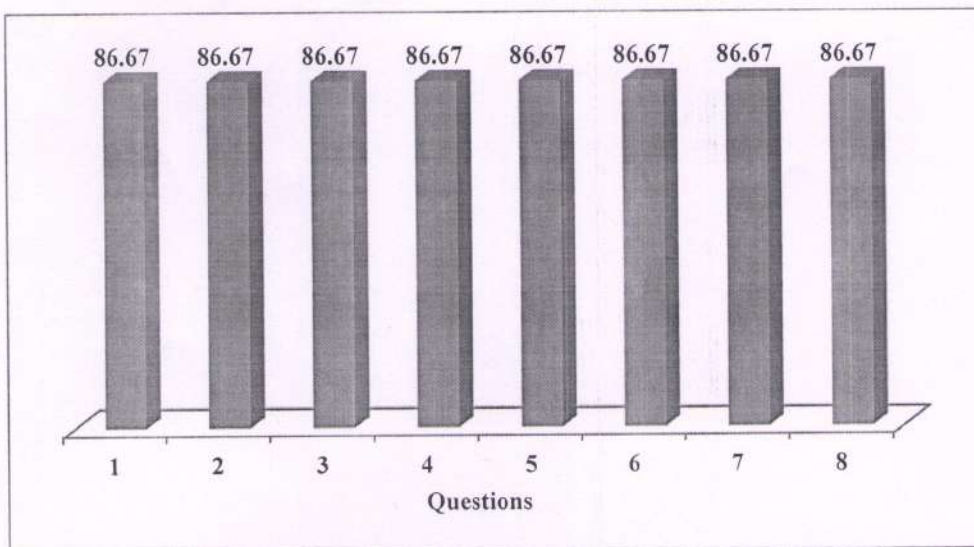


Employer Feedback on Design of Syllabus First Year (Second Semester)

% Feedback	86.67%
-------------------	---------------

Questions asked in Alumni Feedback on Design of Syllabus

1. Rate the depth of the syllabus for the courses in relation to the competencies expected by industry/current global scenarios
2. Rate the syllabus/curriculum in terms of balance between theory and application
3. Rate the distribution of credits to the courses
4. Rate the syllabus/ curriculum prospects for higher education/employability
5. Rate the scope of the courses for internship/training/ research
6. Rate the level of social relevance in syllabus/curriculum
7. Rate the consideration of recent developments of the field in the course syllabus/curriculum
8. Rate the syllabus/ curriculum in enhancing the student's competency





Alumni Feedback on Design of Syllabus First Year (First & Second Semester)

% Feedback	80.72%
-------------------	---------------

Questions asked in Alumni Feedback on Design of Syllabus

1. Rate the curriculum/syllabus in meeting prerequisite knowledge/skillsets required for the successful career
2. Rate the syllabus/curriculum in terms of balance between theory and application
3. Rate the syllabus/ curriculum prospects for higher education/employability
4. Rate the scope of the courses for internship/training/ research
5. Rate the level of social relevance in syllabus/curriculum
6. Rate the consideration of recent developments of the field in the course syllabus/curriculum
7. Rate the syllabus/ curriculum in enhancing the student's competency

