

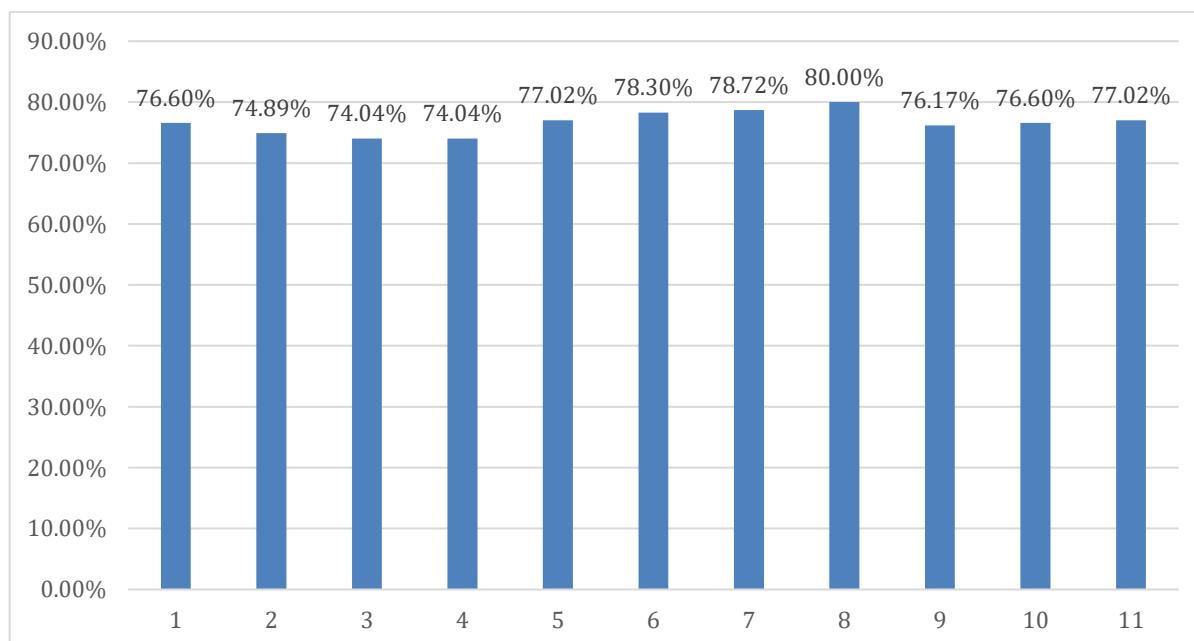


Students Review on Third Semester Syllabus / Curriculum

Questions on Review of Syllabus (AI&ML)

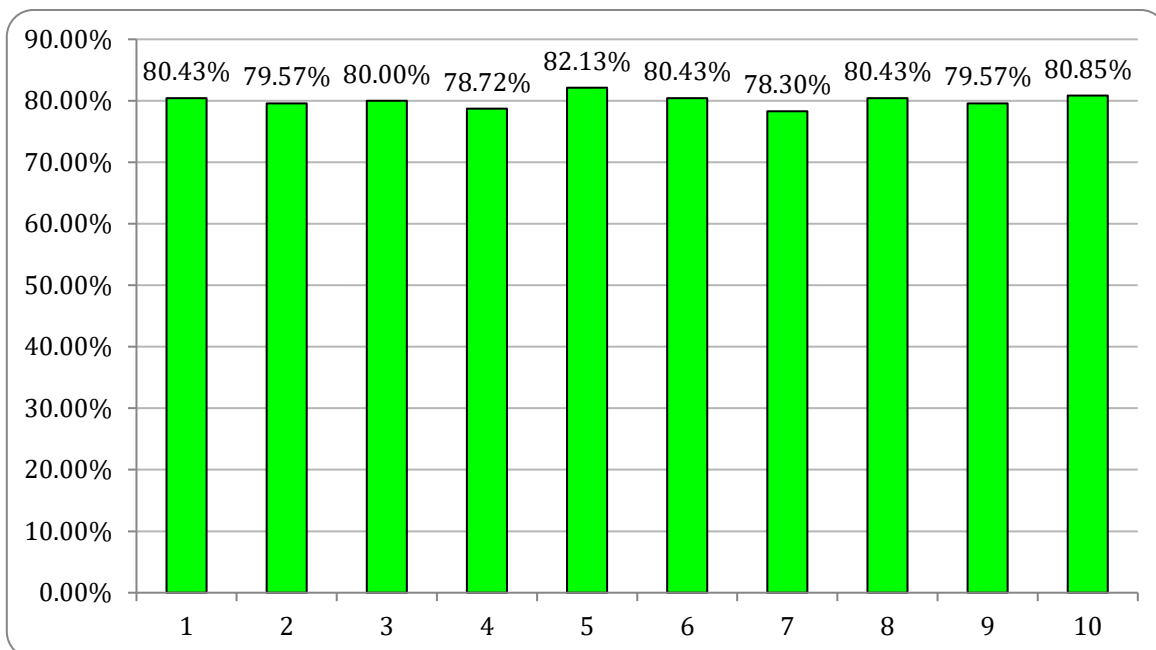
1. The course objectives were clear
2. The course workload was manageable
3. The Course was well organized
4. The syllabus has good balance between theory and application
5. I think the Course was well structured to achieve the learning outcomes (there was a good balance of lectures, tutorials,
6. Learning materials were relevant and useful
7. The provision of learning resources in the library was adequate and appropriate
8. Recommended reading Books etc. were relevant and appropriate
9. Curriculum has prospects for higher education/ employability
10. The syllabus / curriculum has social relevance
11. The Syllabus / Curriculum equip me for suitable placements in the job markets

OPERATING SYSTEM THEORY

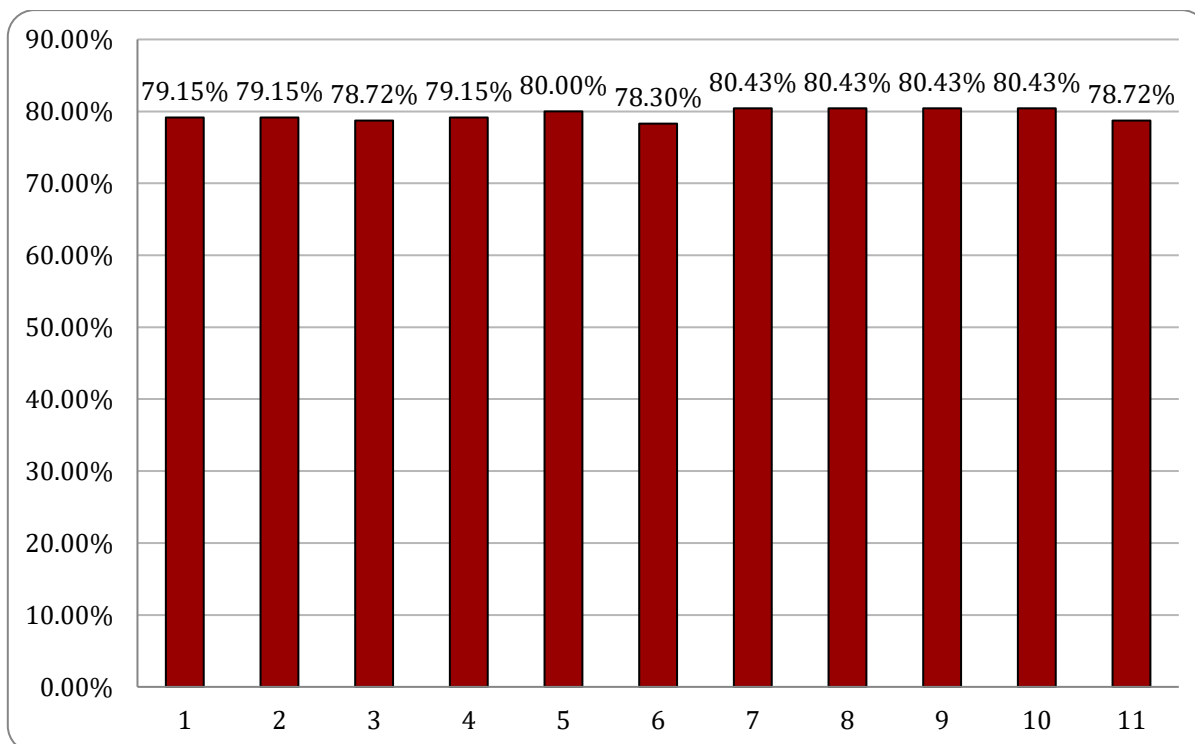




DATA STRUCTURE AND ALGORITHM THEORY



OBJECT ORIENTED PROGRAMMING THEORY

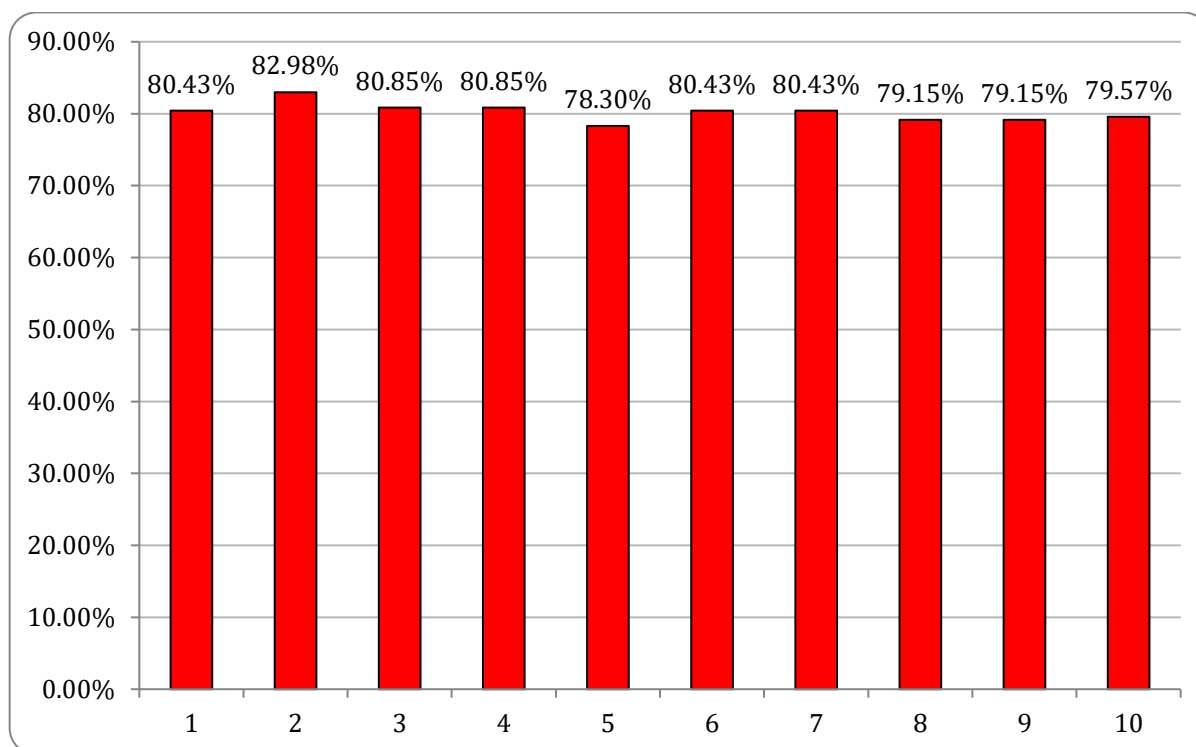




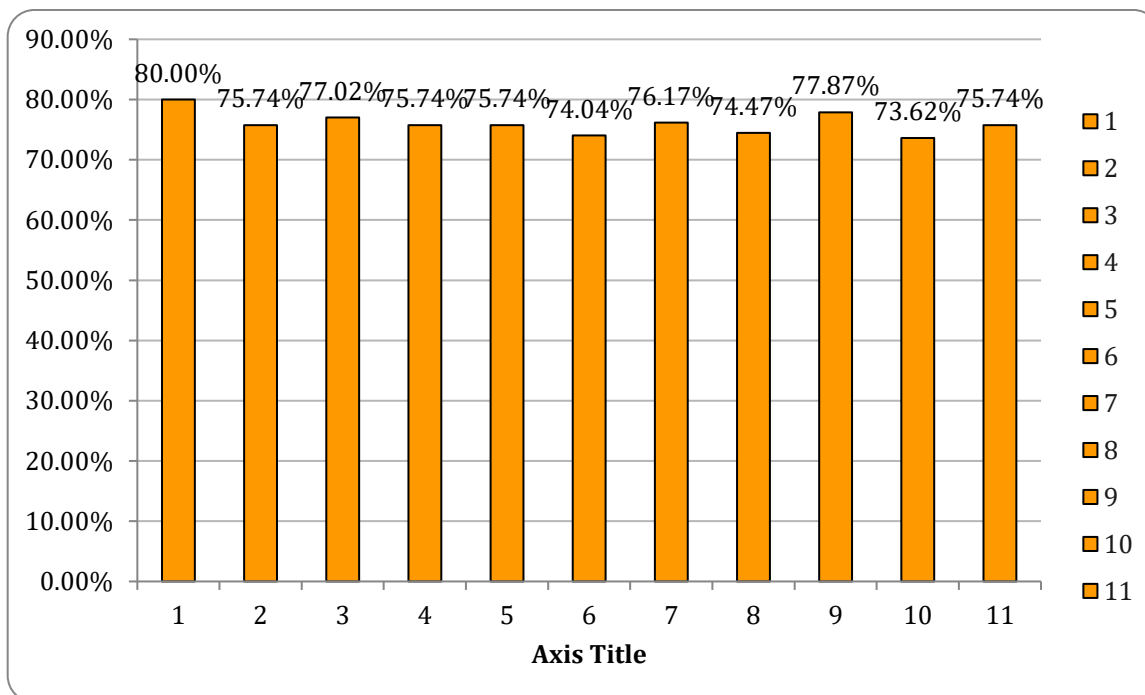
FUNDAMENTALS OF DIGITAL ELECTRONICS AND COMPUTER ARCHITECTURE THEORY



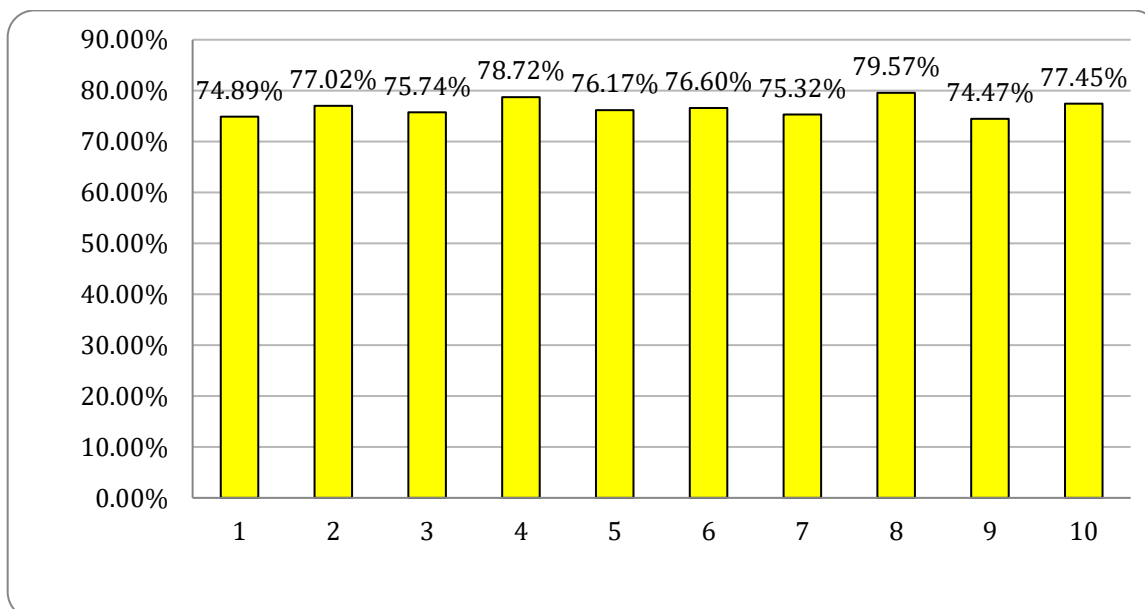
ETHICS FOR IT ENGINEERS & IPR THEORY



PYTHON PROGRAMMING LAB



ENGINEERING MATHEMATICS – III THEORY



Comment:

1. The syllabus has good balance between theory and application
2. Learning materials were relevant and useful
3. Overall syllabus is good.



**S. B. JAIN INSTITUTE OF TECHNOLOGY, MANAGEMENT
& RESEARCH, NAGPUR.**

(An Autonomous Institute, Affiliated to RTMNU, Nagpur)

DEPARTMENT OF EMERGING TECHNOLOGIES (AI&ML and AI&DS)

"Become an excellent center for Emerging Technologies in Computer Science to create competent professionals"

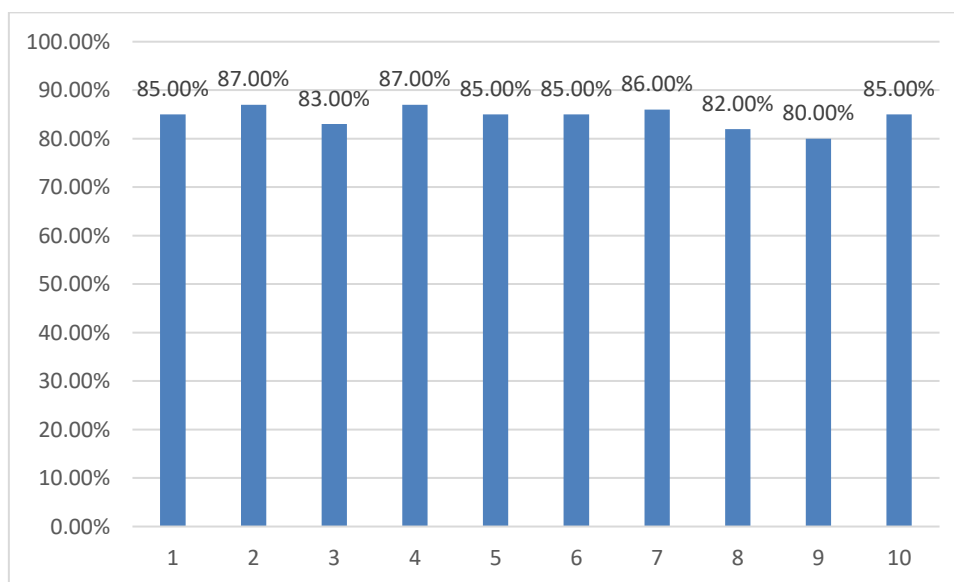


Faculty Review on Sixth Semester Syllabus (AI&ML)

Questions on Review of Syllabus

1. Rate the depth of the syllabus for the course in relation to the competencies expected by industry/current global scenarios.
2. Rate the syllabus in terms of balance between theory and application.
3. Rate the sequence of the units/modules in the course.
4. Rate the distribution of credits to the course.
5. Rate the adequateness of textbooks and reference books mentioned for the course.
6. Rate the syllabus/ curriculum prospects for higher education/employability.
7. Rate the scope of the course for internship/training/research.
8. Rate the level of social relevance in the syllabus.
9. Rate the syllabus content for the courses in terms of burden.
10. Rate the contribution of the courses in terms of Professional core area.

Compiler Design





S. B. JAIN INSTITUTE OF TECHNOLOGY, MANAGEMENT & RESEARCH, NAGPUR.

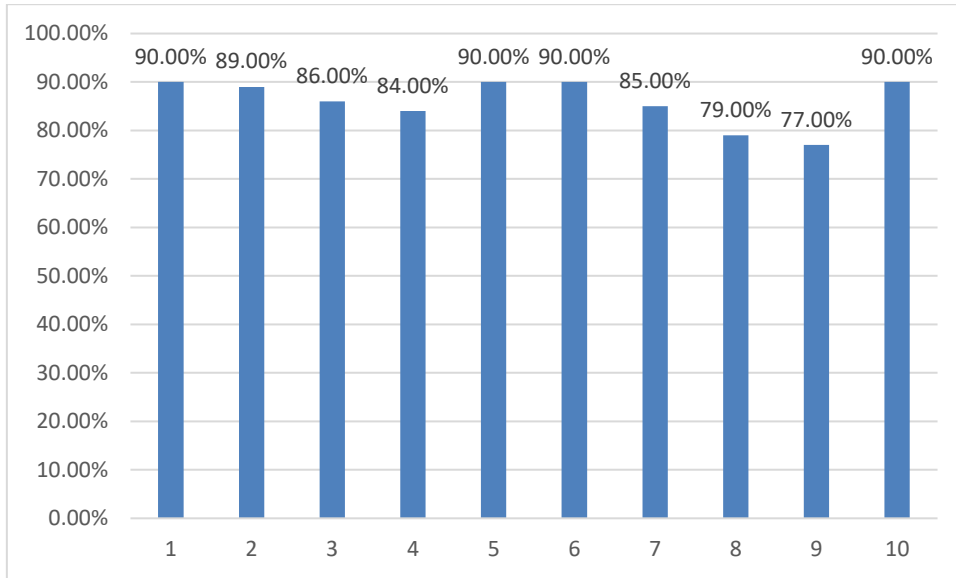
(An Autonomous Institute, Affiliated to RTMNU, Nagpur)

DEPARTMENT OF EMERGING TECHNOLOGIES (AI&ML and AI&DS)

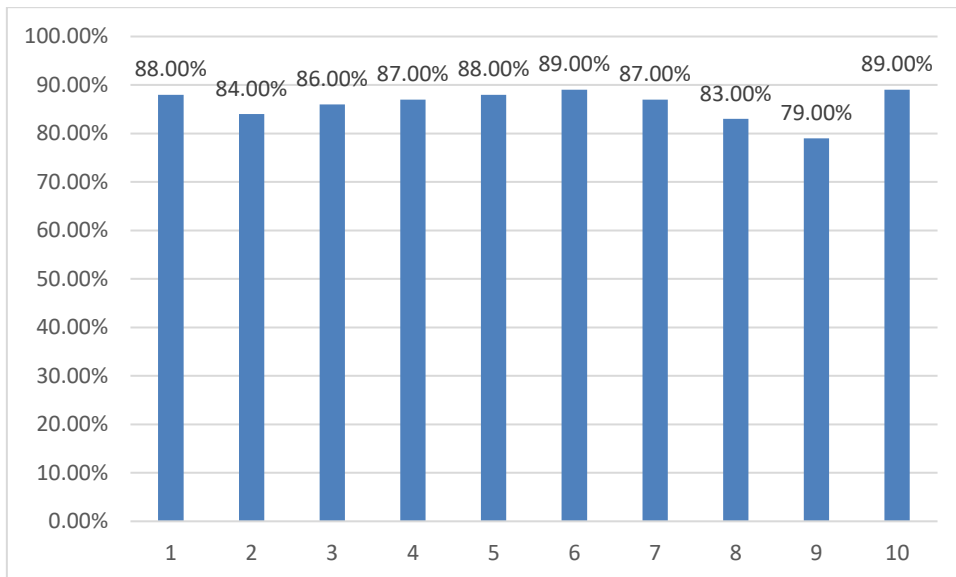
"Become an excellent center for Emerging Technologies in Computer Science to create competent professionals"



Deep Learning



Deep Learning Lab





S. B. JAIN INSTITUTE OF TECHNOLOGY, MANAGEMENT & RESEARCH, NAGPUR.

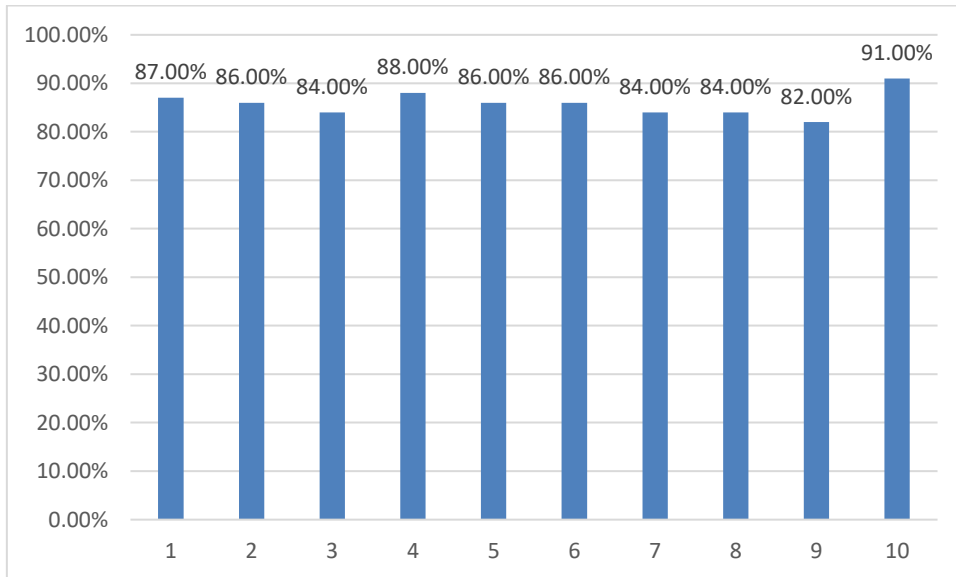
(An Autonomous Institute, Affiliated to RTMNU, Nagpur)

DEPARTMENT OF EMERGING TECHNOLOGIES (AI&ML and AI&DS)

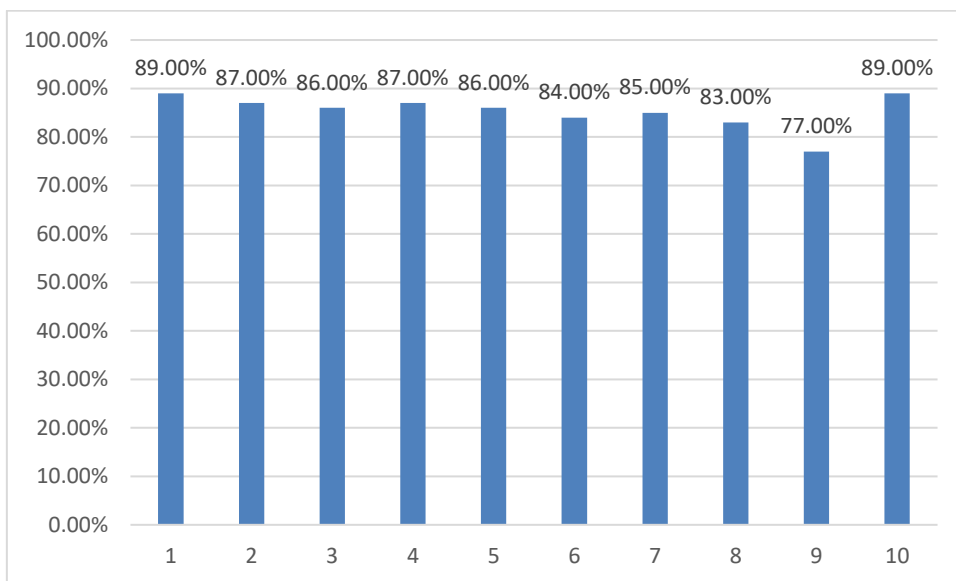
"Become an excellent center for Emerging Technologies in Computer Science to create competent professionals"



Optimization Techniques in ML



Optimization Techniques in ML Lab





S. B. JAIN INSTITUTE OF TECHNOLOGY, MANAGEMENT & RESEARCH, NAGPUR.

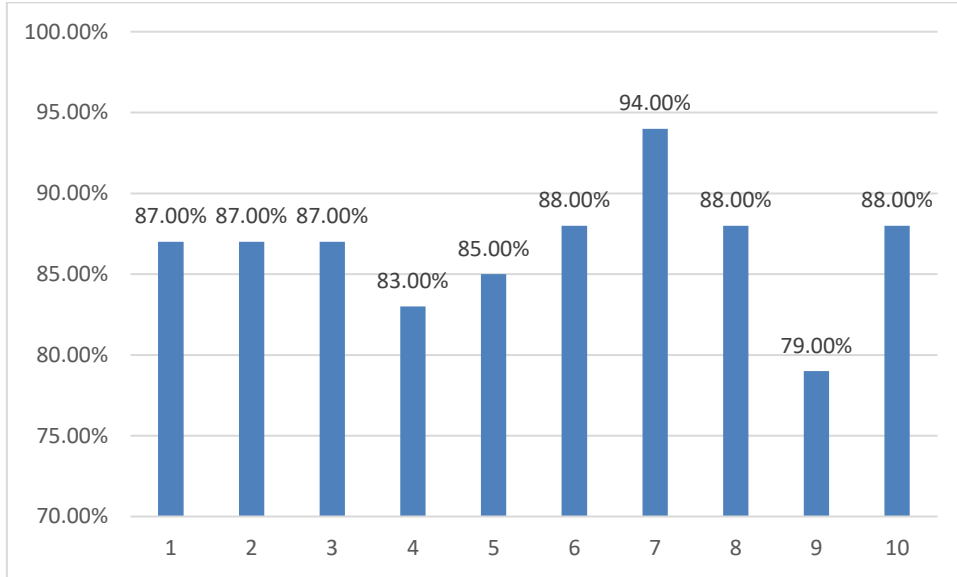
(An Autonomous Institute, Affiliated to RTMNU, Nagpur)

DEPARTMENT OF EMERGING TECHNOLOGIES (AI&ML and AI&DS)

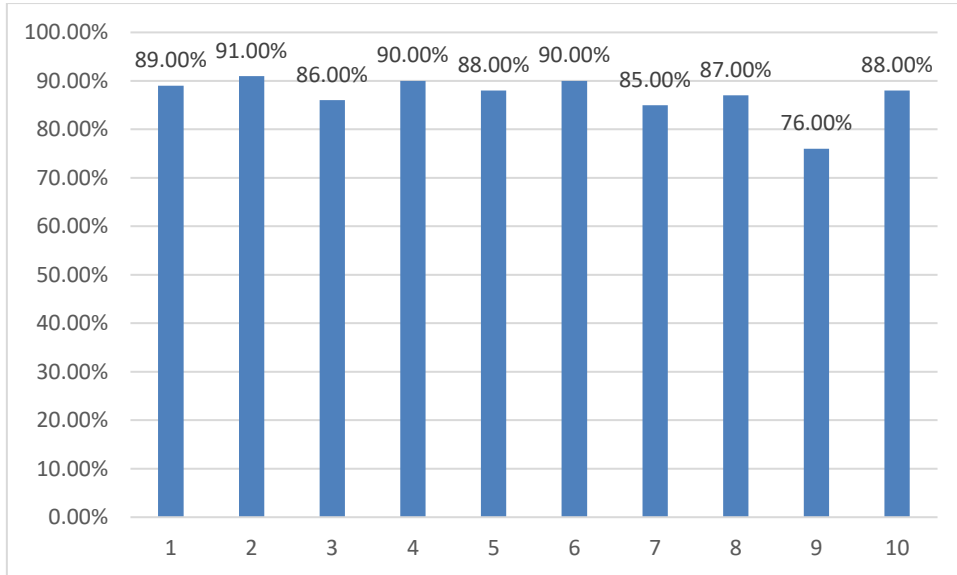
"Become an excellent center for Emerging Technologies in Computer Science to create competent professionals"



Digital Image & Video Processing



Digital Image & Video Processing Lab





S. B. JAIN INSTITUTE OF TECHNOLOGY, MANAGEMENT & RESEARCH, NAGPUR.

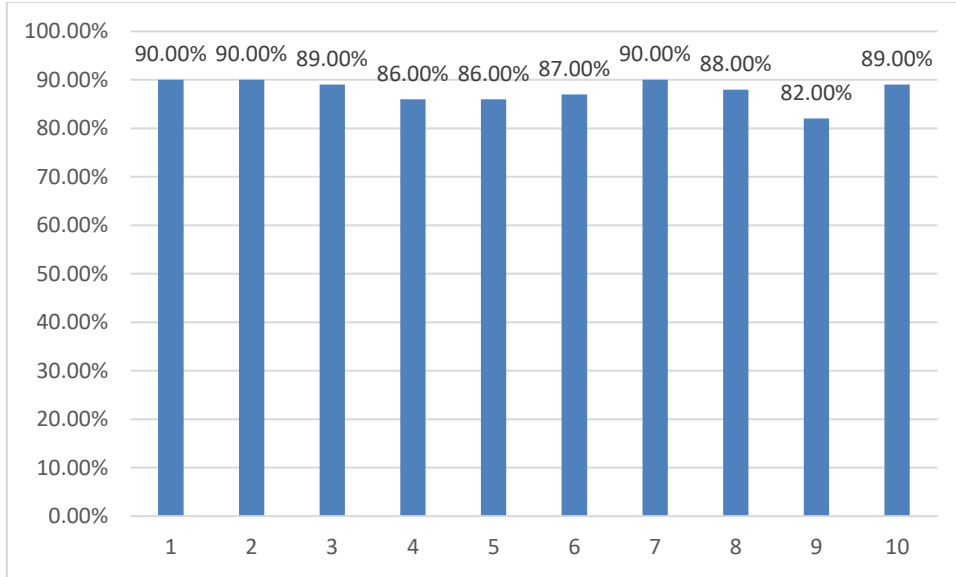
(An Autonomous Institute, Affiliated to RTMNU, Nagpur)

DEPARTMENT OF EMERGING TECHNOLOGIES (AI&ML and AI&DS)

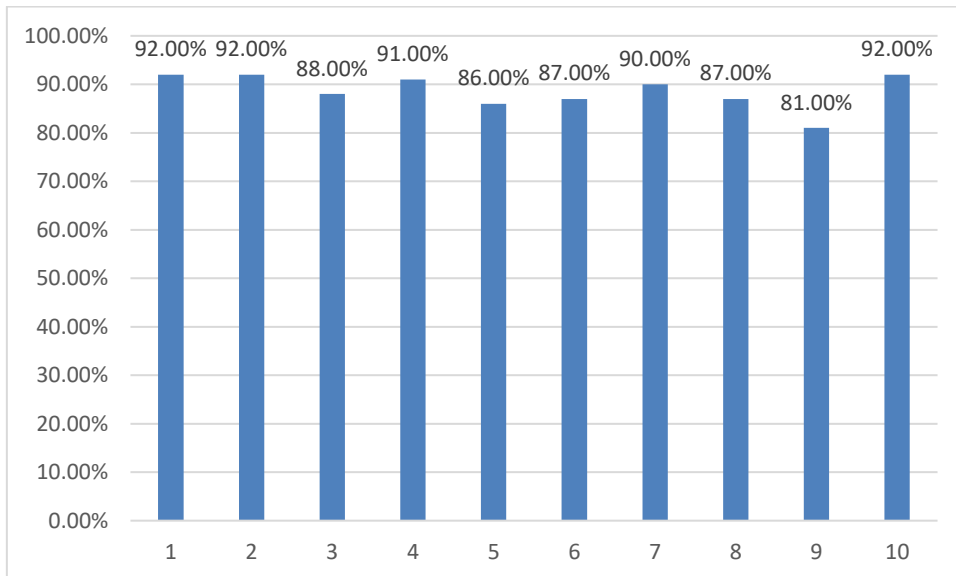
"Become an excellent center for Emerging Technologies in Computer Science to create competent professionals"



Data Mining and Predictive Modeling



Data Mining and Predictive Modeling Lab





S. B. JAIN INSTITUTE OF TECHNOLOGY, MANAGEMENT & RESEARCH, NAGPUR.

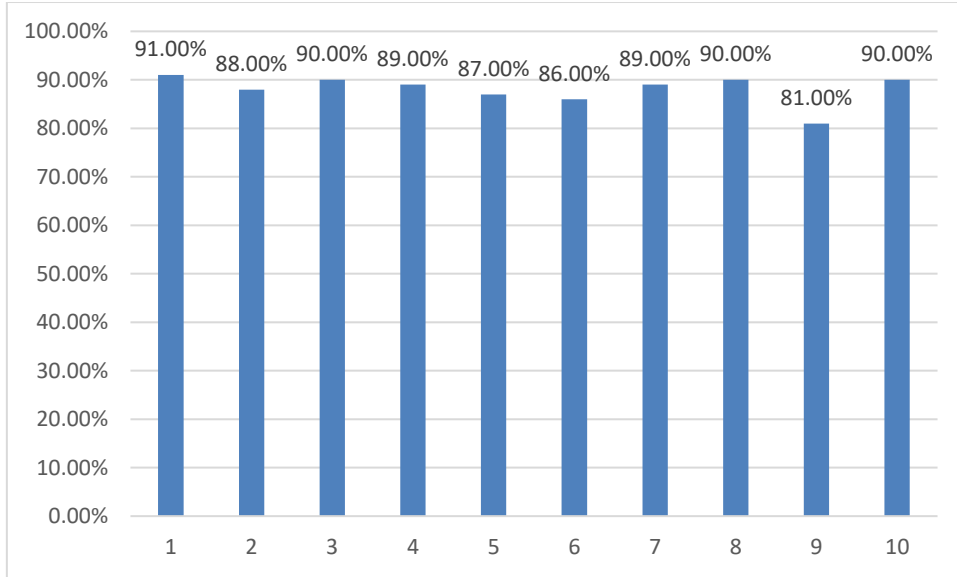
(An Autonomous Institute, Affiliated to RTMNU, Nagpur)

DEPARTMENT OF EMERGING TECHNOLOGIES (AI&ML and AI&DS)

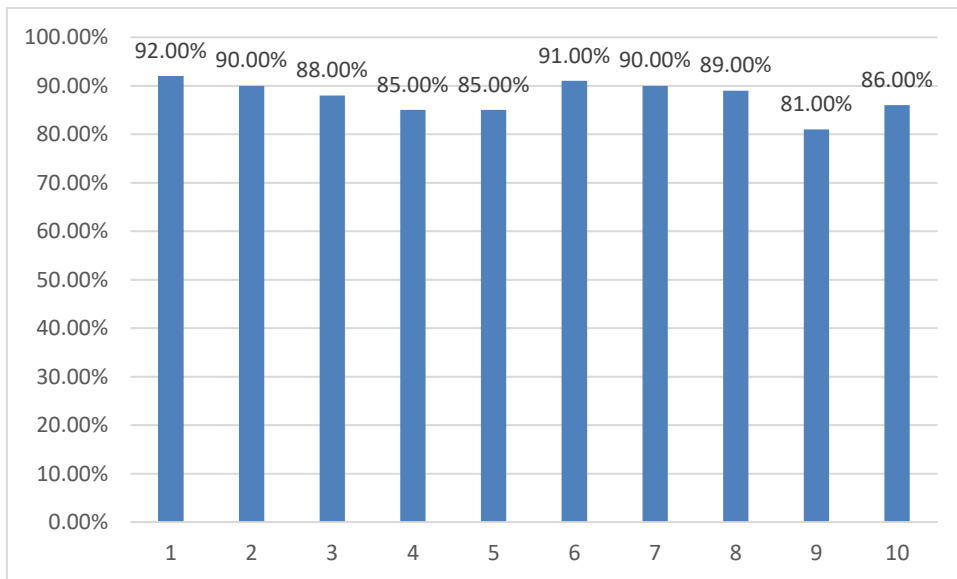
"Become an excellent center for Emerging Technologies in Computer Science to create competent professionals"



GPU Computing



GPU Computing Lab





S. B. JAIN INSTITUTE OF TECHNOLOGY, MANAGEMENT & RESEARCH, NAGPUR.

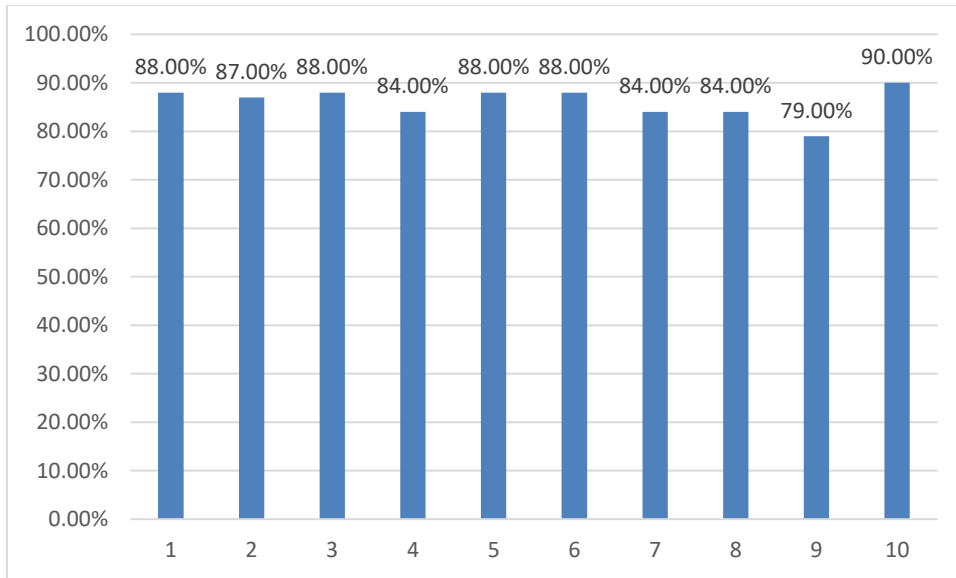
(An Autonomous Institute, Affiliated to RTMNU, Nagpur)

DEPARTMENT OF EMERGING TECHNOLOGIES (AI&ML and AI&DS)

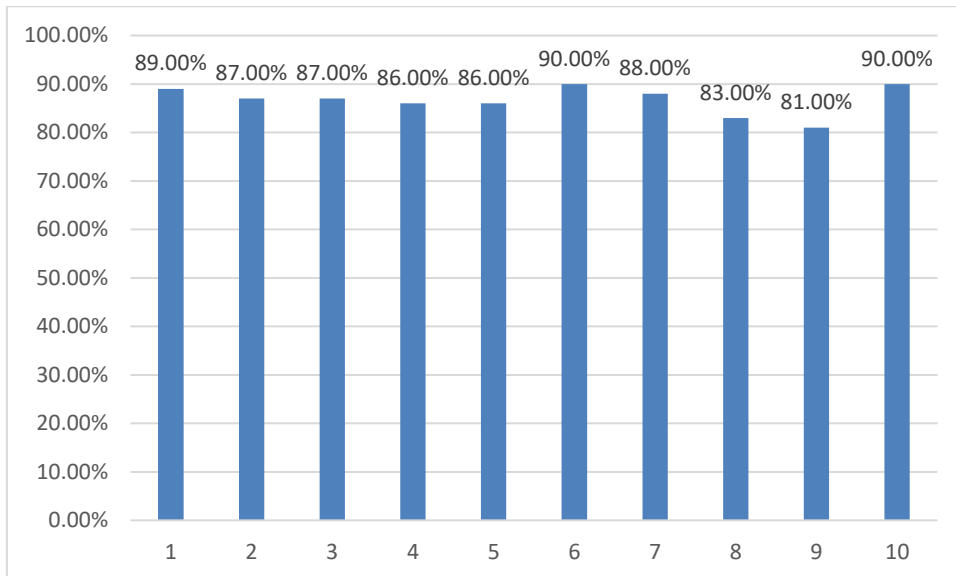
"Become an excellent center for Emerging Technologies in Computer Science to create competent professionals"



Computer Vision



Computer Vision Lab





S. B. JAIN INSTITUTE OF TECHNOLOGY, MANAGEMENT & RESEARCH, NAGPUR.

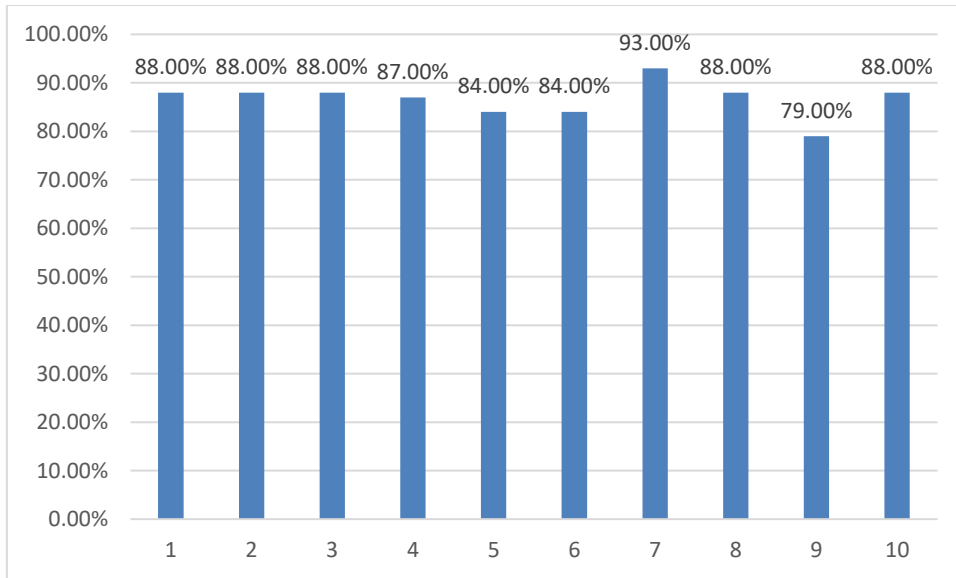
(An Autonomous Institute, Affiliated to RTMNU, Nagpur)

DEPARTMENT OF EMERGING TECHNOLOGIES (AI&ML and AI&DS)

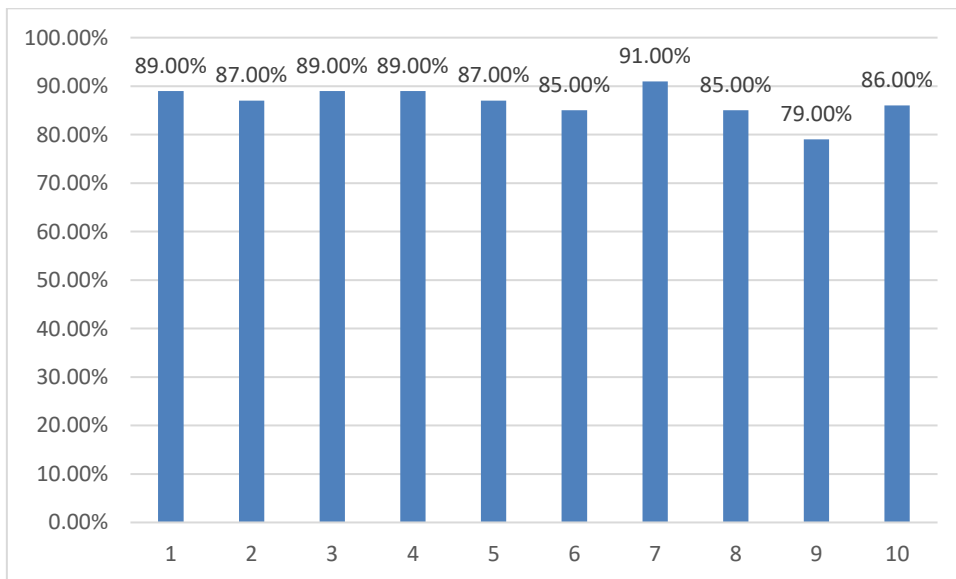
"Become an excellent center for Emerging Technologies in Computer Science to create competent professionals"



IoT & Machine Learning



IoT & Machine Learning Lab



Comments:

1. Syllabus is good and properly organized
2. Well-designed syllabus and cover all vital topics regarding the subject.
3. Well, syllabus is quite vast but covers all important aspects regarding compilers design.

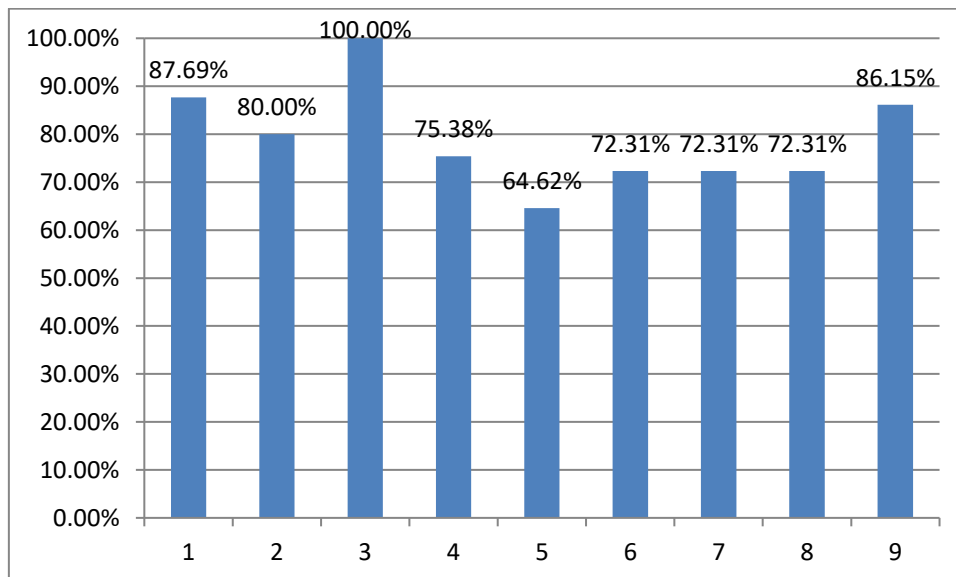


Faculty Review on Fifth Semester Syllabus (AI&ML)

Questions on Review of Syllabus

1. Rate the depth of the syllabus for the course in relation to the competencies expected by industry/current global scenarios.
2. Rate the syllabus in terms of balance between theory and application.
3. Rate the sequence of the units/modules in the course.
4. Rate the distribution of credits to the course.
5. Rate the adequateness of textbooks and reference books mentioned for the course.
6. Rate the syllabus/ curriculum prospects for higher education/employability.
7. Rate the scope of the course for internship/training/research.
8. Rate the level of social relevance in the syllabus.
9. Rate the syllabus content for the courses in terms of burden.
10. Rate the contribution of the courses in terms of Professional core area.

Theory of Computation





S. B. JAIN INSTITUTE OF TECHNOLOGY, MANAGEMENT & RESEARCH, NAGPUR.

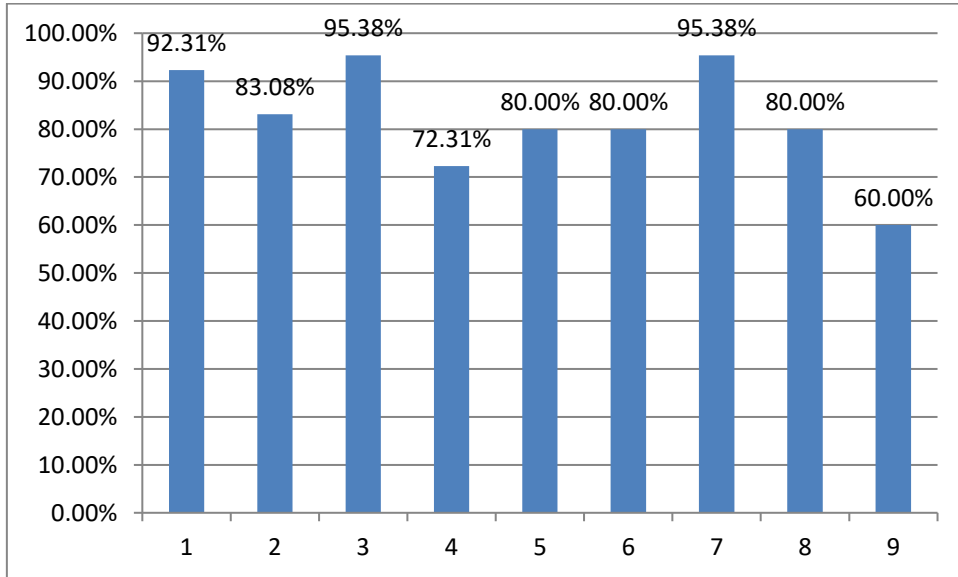
(An Autonomous Institute, Affiliated to RTMNU, Nagpur)

DEPARTMENT OF EMERGING TECHNOLOGIES (AI&ML and AI&DS)

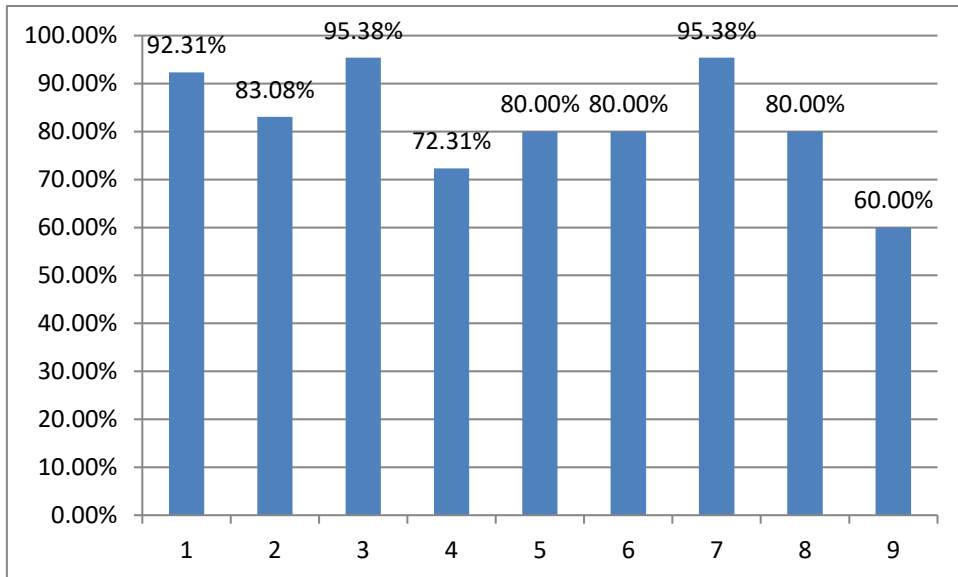
"Become an excellent center for Emerging Technologies in Computer Science to create competent professionals"



Design & Analysis of Algorithms



Design & Analysis of Algorithms Lab





S. B. JAIN INSTITUTE OF TECHNOLOGY, MANAGEMENT & RESEARCH, NAGPUR.

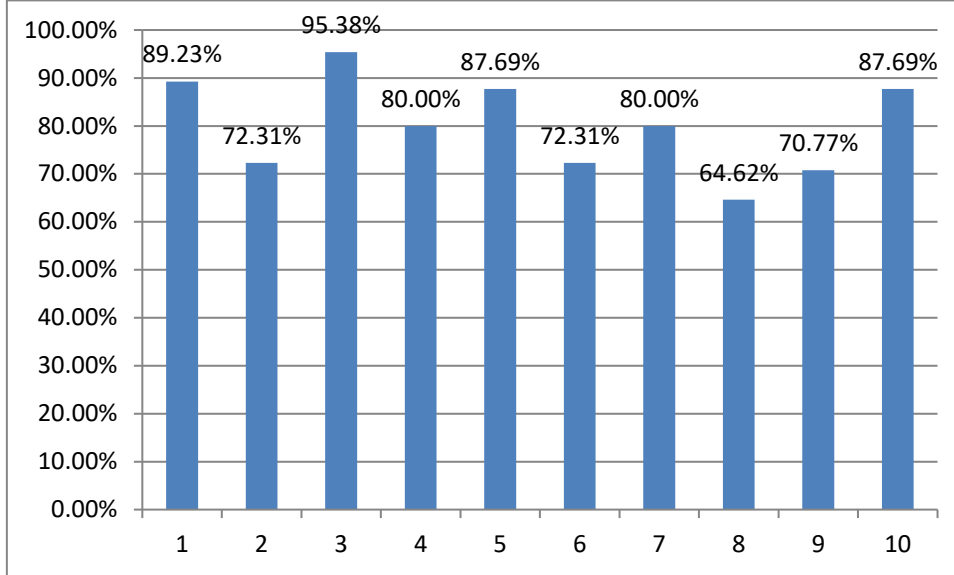
(An Autonomous Institute, Affiliated to RTMNU, Nagpur)

DEPARTMENT OF EMERGING TECHNOLOGIES (AI&ML and AI&DS)

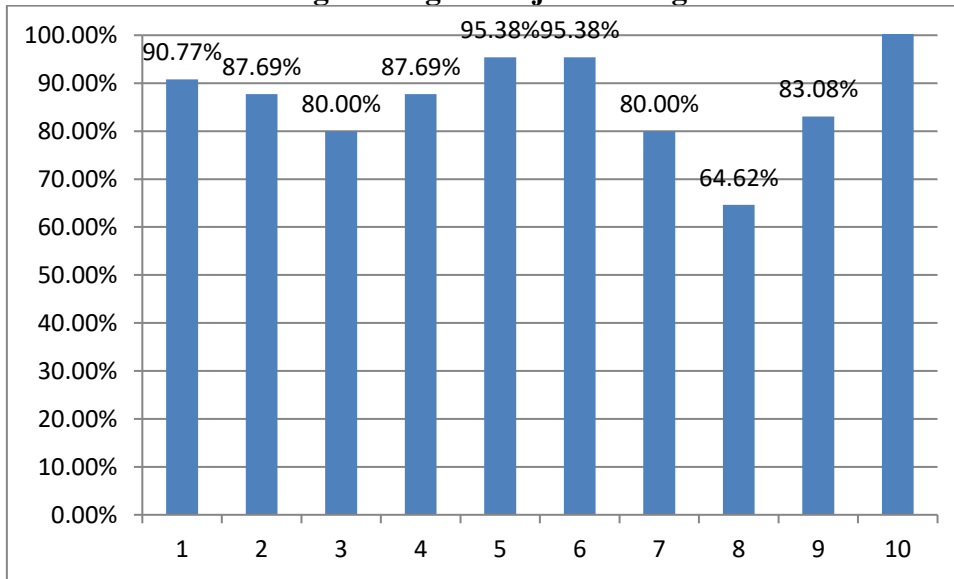
"Become an excellent center for Emerging Technologies in Computer Science to create competent professionals"



Software Engineering & Project Management



Software Engineering & Project Management Lab





S. B. JAIN INSTITUTE OF TECHNOLOGY, MANAGEMENT & RESEARCH, NAGPUR.

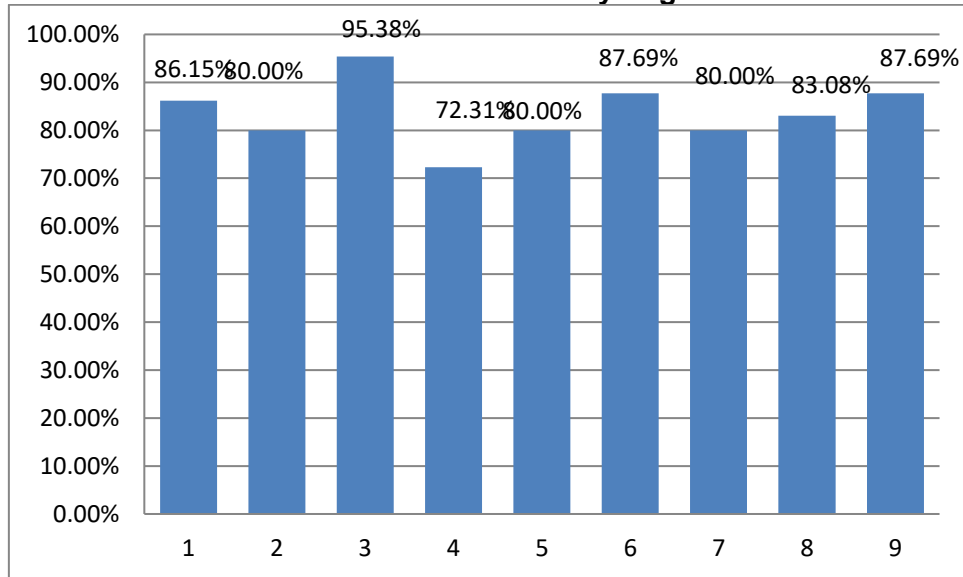
(An Autonomous Institute, Affiliated to RTMNU, Nagpur)

DEPARTMENT OF EMERGING TECHNOLOGIES (AI&ML and AI&DS)

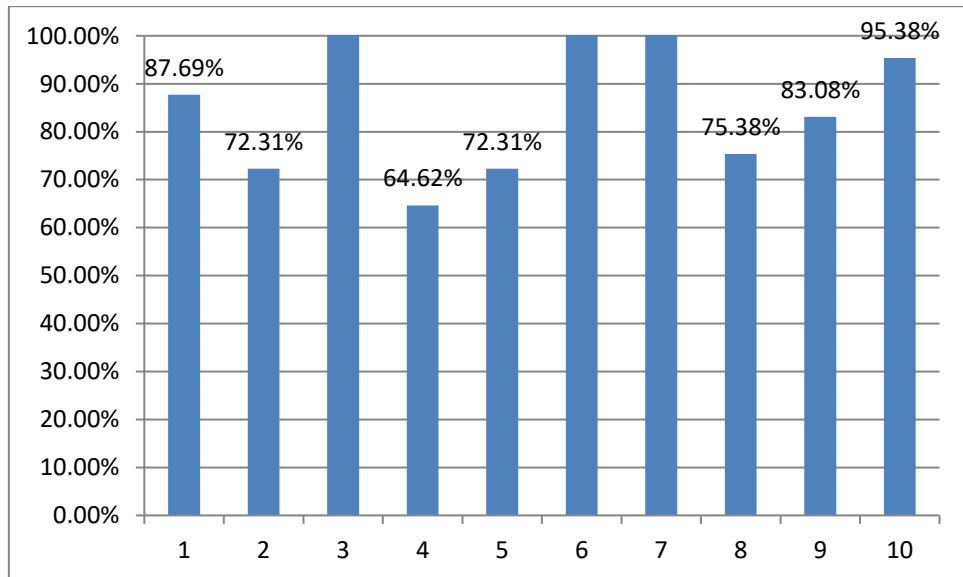
"Become an excellent center for Emerging Technologies in Computer Science to create competent professionals"



Neural Network & Fuzzy Logic



Game Development using Python



Comment :

1. Overall syllabus is excellent & well designed.