

S. B. JAIN INSTITUTE OF TECHNOLOGY, MANAGEMENT & RESEARCH, NAGPUR.



(An Autonomous Institute, Affiliated to RTMNU, Nagpur)
DEPARTMENT OF MECHANICAL ENGINEERING
Vision: Emerge as an excellent centre for Mechanical Engineering education



STUDENT SATISFACTION SURVEY (SESSION 2021-22 ODD SEM)

Part-A: Teaching Learning Process

Year/Semester/Section: IV/VII/A & B

1. How much of the syllabus was covered in the class?		50% 40% 30% 20% 10% 0%		% Satisfaction
% of Syllabus	% of Students			88.19%
85 to 100%	42.48%			Remark
70 to 84%	38.94%			Excellent
55 to 69%	16.81%			
30 to 54%	0.88%			
Below 30%	0.88%			

2. How well did the teachers prepare for the classes?		100% 80% 60% 40% 20% 0%		% Satisfaction
Ratings	% of Students			88.72%
Thoroughly	30.97%			Remark
Satisfactorily	63.72%			Excellent
Poorly	4.42%			
Indifferently	0.88%			
Won't teach at all	0.00%			

3. How well were the teachers able to communicate?		100% 80% 60% 40% 20% 0%		% Satisfaction
Ratings	% of Students			89.25%
Always effective	51.33%			Remark
Sometimes effective	28.32%			Excellent
Just satisfactorily	17.70%			
Generally ineffective	2.65%			
Very poor	0.00%			

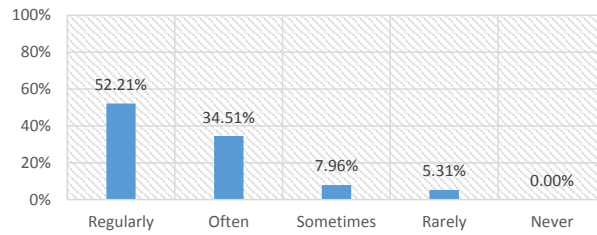
4. The teacher's approach to teaching can best be described as		100% 80% 60% 40% 20% 0%		% Satisfaction
Ratings	% of Students			86.19%
Excellent	37.17%			Remark
Very good	37.17%			Excellent
Good	23.01%			
Fair	1.77%			
Poor	0.88%			

5. Fairness of the internal evaluation process by the teachers.		100% 80% 60% 40% 20% 0%		% Satisfaction
Ratings	% of Students			89.51%
Always fair	47.79%			Remark
Usually fair	38.94%			Excellent
Sometimes unfair	9.73%			
Usually unfair	2.65%			
Unfair	0.88%			

6. Was your performance in assignments discussed with you?		100% 80% 60% 40% 20% 0%		% Satisfaction
Ratings	% of Students			89.51%
Every time	48.67%			Remark
Usually	38.05%			Excellent
Occasionally/ Sometimes	9.73%			
Rarely	1.77%			
Never	1.77%			

7. The institute takes active interest in promoting internship, field visit opportunities for students.

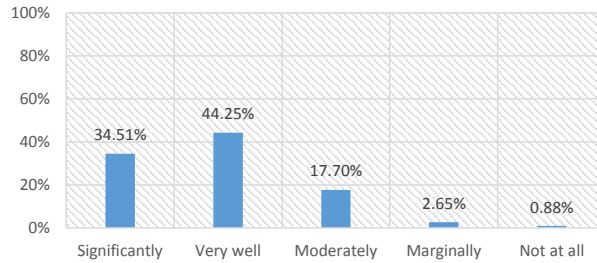
Ratings	% of Students
Regularly	52.21%
Often	34.51%
Sometimes	7.96%
Rarely	5.31%
Never	0.00%



% Satisfaction
90.04%
Remark
Excellent

8. The teaching and mentoring process in your institution facilitates you in cognitive, social and emotional growth.

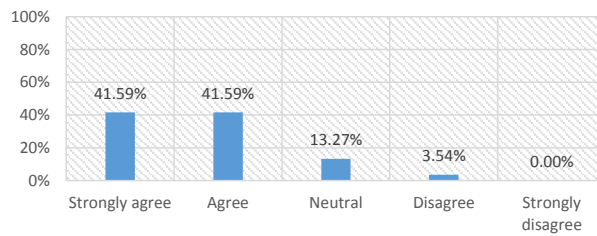
Ratings	% of Students
Significantly	34.51%
Very well	44.25%
Moderately	17.70%
Marginally	2.65%
Not at all	0.88%



% Satisfaction
86.33%
Remark
Excellent

9. The institution provides multiple opportunities to learn and grow.

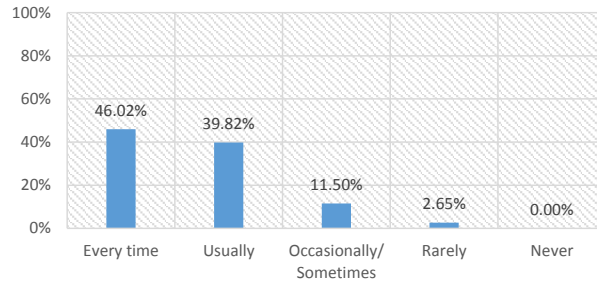
Ratings	% of Students
Strongly agree	41.59%
Agree	41.59%
Neutral	13.27%
Disagree	3.54%
Strongly disagree	0.00%



% Satisfaction
88.19%
Remark
Excellent

10. Teachers inform you about your expected competencies, course outcomes and programme outcomes and review the course syllabus in the class.

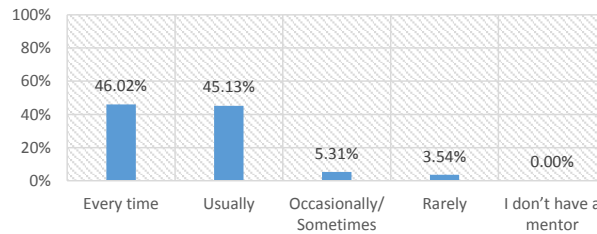
Ratings	% of Students
Every time	46.02%
Usually	39.82%
Occasionally/ Sometimes	11.50%
Rarely	2.65%
Never	0.00%



% Satisfaction
89.38%
Remark
Excellent

11. Your mentor does a necessary follow-up with an assigned task to you.

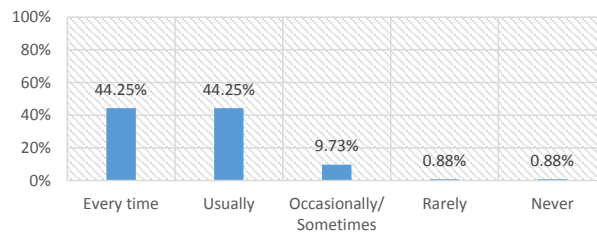
Ratings	% of Students
Every time	46.02%
Usually	45.13%
Occasionally/ Sometimes	5.31%
Rarely	3.54%
I don't have a mentor	0.00%



% Satisfaction
90.04%
Remark
Excellent

12. The teachers illustrate the concepts through examples and applications.

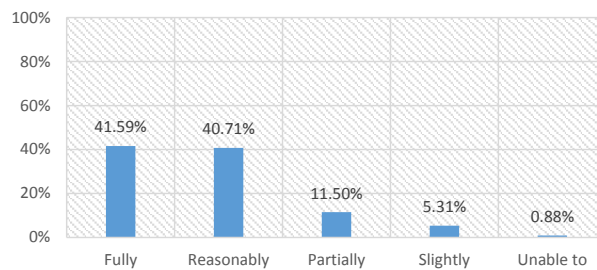
Ratings	% of Students
Every time	44.25%
Usually	44.25%
Occasionally/ Sometimes	9.73%
Rarely	0.88%
Never	0.88%



% Satisfaction
89.51%
Remark
Excellent

13. The teachers identify your strengths and encourage you with providing right level of challenges.

Ratings	% of Students
Fully	41.59%
Reasonably	40.71%
Partially	11.50%
Slightly	5.31%
Unable to	0.88%



% Satisfaction

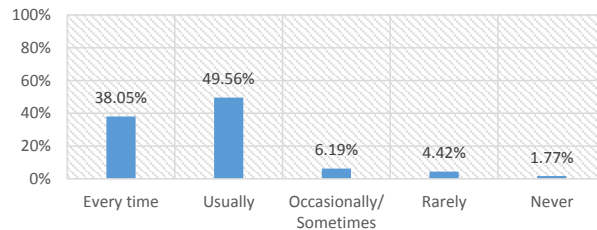
87.52%

Remark

Excellent

14. Teachers are able to identify your weaknesses and help you to overcome them.

Ratings	% of Students
Every time	38.05%
Usually	49.56%
Occasionally/ Sometimes	6.19%
Rarely	4.42%
Never	1.77%



% Satisfaction

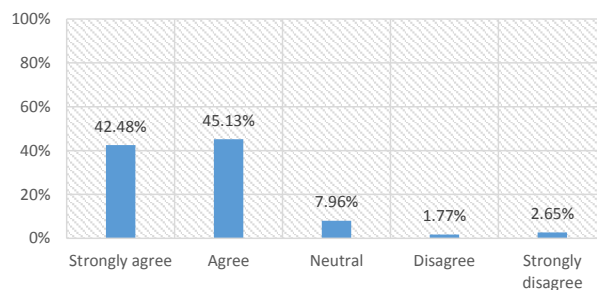
87.65%

Remark

Excellent

15. The institution makes effort to engage students in the monitoring, review and continuous quality improvement of the teaching learning

Ratings	% of Students
Strongly agree	42.48%
Agree	45.13%
Neutral	7.96%
Disagree	1.77%
Strongly disagree	2.65%



% Satisfaction

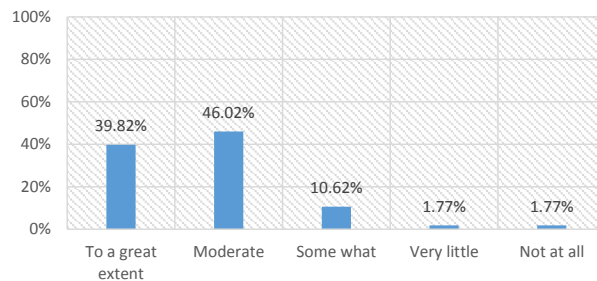
88.45%

Remark

Excellent

16. The institute/ teachers use student centric methods, such as experiential learning, participative learning and problem solving methodologies for enhancing learning experiences.

Ratings	% of Students
To a great extent	39.82%
Moderate	46.02%
Some what	10.62%
Very little	1.77%
Not at all	1.77%



% Satisfaction

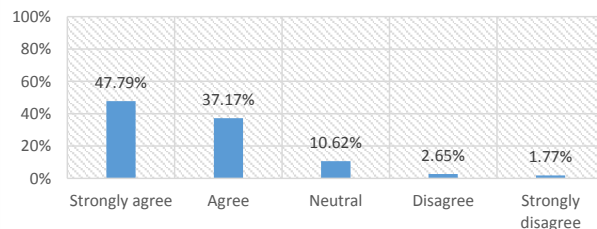
88.05%

Remark

Excellent

17. Teachers encourage you to participate in extracurricular activities.

Ratings	% of Students
Strongly agree	47.79%
Agree	37.17%
Neutral	10.62%
Disagree	2.65%
Strongly disagree	1.77%



% Satisfaction

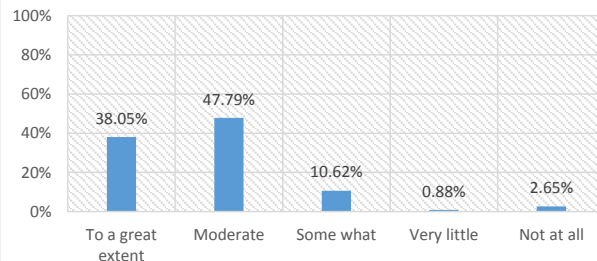
88.98%

Remark

Excellent

18. Efforts are made by the institute/ teachers to inculcate soft skills, life skills and employability skills to make you ready for the world of work.

Ratings	% of Students
To a great extent	38.05%
Moderate	47.79%
Some what	10.62%
Very little	0.88%
Not at all	2.65%



% Satisfaction

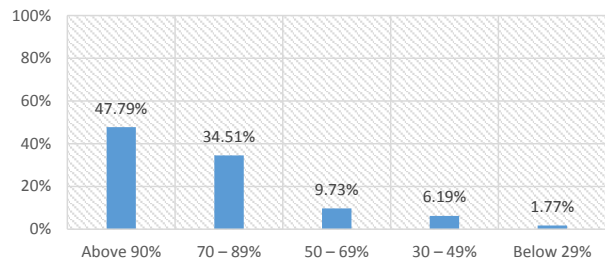
87.65%

Remark

Excellent

19. What percentage of teachers use ICT tools such as LCD projector, Multimedia, etc. while teaching.

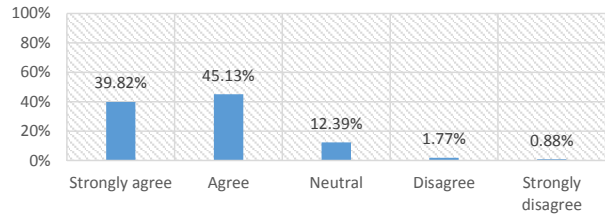
Ratings	% of Students
Above 90%	47.79%
70 – 89%	34.51%
50 – 69%	9.73%
30 – 49%	6.19%
Below 29%	1.77%



% Satisfaction
88.05%
Remark
Excellent

20. The overall quality of teaching-learning process in your institute is very good.

Ratings	% of Students
Strongly agree	39.82%
Agree	45.13%
Neutral	12.39%
Disagree	1.77%
Strongly disagree	0.88%



% Satisfaction
88.19%
Remark
Excellent

Prof. Amit Tajne
Head of Department
Mechanical Engineering

S. B. JAIN INSTITUTE OF TECHNOLOGY, MANAGEMENT & RESEARCH, NAGPUR.



(An Autonomous Institute, Affiliated to RTMNU, Nagpur)
DEPARTMENT OF MECHANICAL ENGINEERING



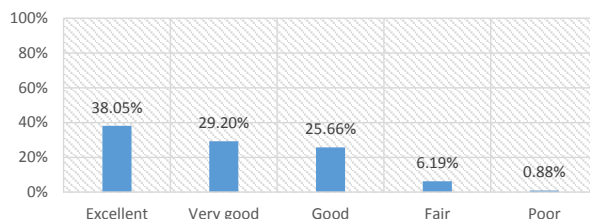
Vision: Emerge as an excellent centre for Mechanical Engineering education

STUDENT SATISFACTION SURVEY (SESSION 2021-22 ODD SEM)

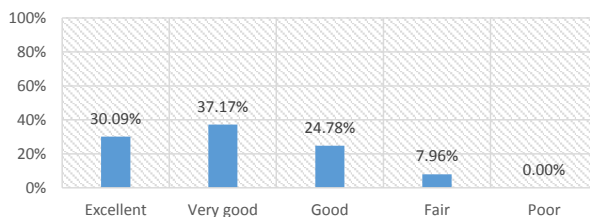
Part-B: Institutional Facilities and Support

Year/Semester/Section: IV/VII/A & B

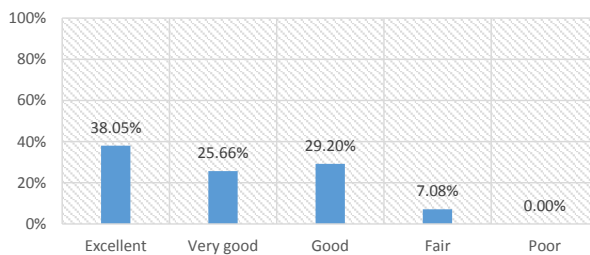
1. Adequacy of Laboratory facilities during online teaching learning		% Satisfaction
Ratings	% of Students	
Excellent	38.05%	84.60% Remark Very Good
Very good	29.20%	
Good	25.66%	
Fair	6.19%	
Poor	0.88%	



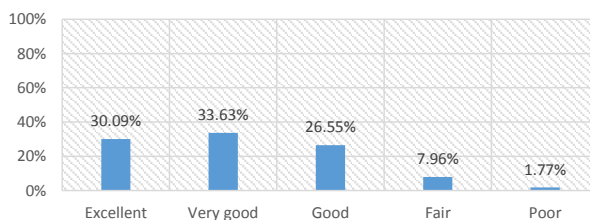
2. Availability of learning resources (PPTs, pdfs, notes, contents etc.)		% Satisfaction
Ratings	% of Students	
Excellent	30.09%	83.41% Remark Very Good
Very good	37.17%	
Good	24.78%	
Fair	7.96%	
Poor	0.00%	



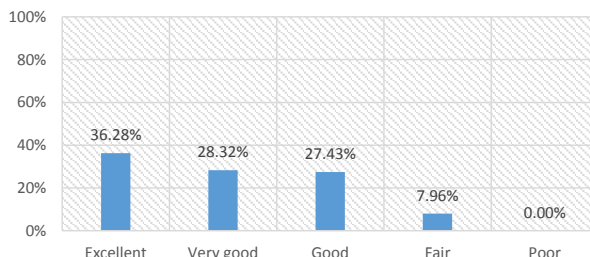
3. Mechanism and approach to provide exposure to external world through Guest Lectures, Expert Talks etc.		% Satisfaction
Ratings	% of Students	
Excellent	38.05%	84.20% Remark Very Good
Very good	25.66%	
Good	29.20%	
Fair	7.08%	
Poor	0.00%	



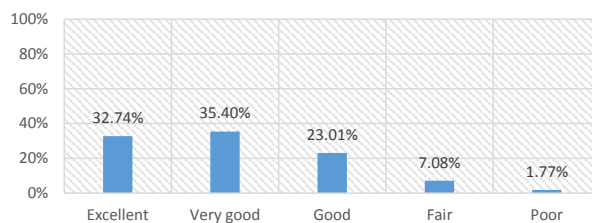
4. IT connectivity with Faculties during online classes.		% Satisfaction
Ratings	% of Students	
Excellent	30.09%	82.35% Remark Very Good
Very good	33.63%	
Good	26.55%	
Fair	7.96%	
Poor	1.77%	



5. Overall approach and commitment of the Department towards providing quality Technical and Professional Education.		% Satisfaction
Ratings	% of Students	
Excellent	36.28%	83.94% Remark Very Good
Very good	28.32%	
Good	27.43%	
Fair	7.96%	
Poor	0.00%	

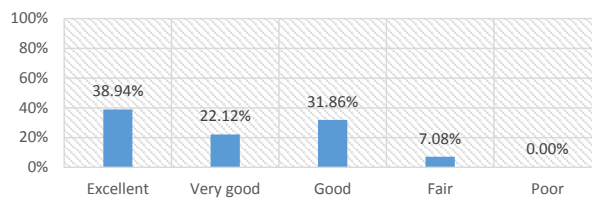


6. Mechanism and approach to deal with students/parents grievances	
Ratings	% of Students
Excellent	32.74%
Very good	35.40%
Good	23.01%
Fair	7.08%
Poor	1.77%



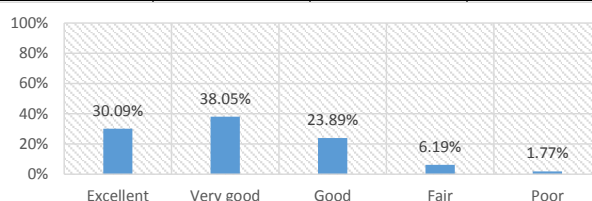
% Satisfaction
83.54%
Remark
Very Good

7. Students Guidance and mentoring facilities	
Ratings	% of Students
Excellent	38.94%
Very good	22.12%
Good	31.86%
Fair	7.08%
Poor	0.00%



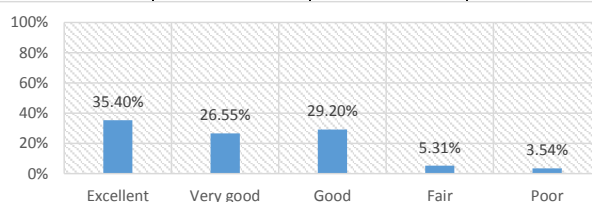
% Satisfaction
83.94%
Remark
Very Good

8. Use of modern tools and methods	
Ratings	% of Students
Excellent	30.09%
Very good	38.05%
Good	23.89%
Fair	6.19%
Poor	1.77%



% Satisfaction
83.27%
Remark
Very Good

9. Library Facility	
Ratings	% of Students
Excellent	35.40%
Very good	26.55%
Good	29.20%
Fair	5.31%
Poor	3.54%



% Satisfaction
82.74%
Remark
Very Good

Prof. Amit Tajne
Head of Department
Mechanical Engineering