

S. B. JAIN INSTITUTE OF TECHNOLOGY, MANAGEMENT & RESEARCH, NAGPUR.



(An Autonomous Institute, Affiliated to RTMNU, Nagpur)
DEPARTMENT OF MECHANICAL ENGINEERING
Vision: Emerge as an excellent centre for Mechanical Engineering education



STUDENT SATISFACTION SURVEY (SESSION 2021-22 ODD SEM)

Part-A: Teaching Learning Process

Year/Semester/Section: III/V/A & B

1. How much of the syllabus was covered in the class?		50% 40% 30% 20% 10% 0%		% Satisfaction
% of Syllabus	% of Students			
85 to 100%	40.00%			87.29%
70 to 84%	40.00%			
55 to 69%	16.19%			
30 to 54%	2.86%			
Below 30%	0.95%			
				Remark
				Excellent

2. How well did the teachers prepare for the classes?		100% 80% 60% 40% 20% 0%		% Satisfaction
Ratings	% of Students			
Thoroughly	32.38%			88.00%
Satisfactorily	56.19%			
Poorly	10.48%			
Indifferently	0.95%			
Won't teach at all	0.00%			
				Remark
				Excellent

3. How well were the teachers able to communicate?		100% 80% 60% 40% 20% 0%		% Satisfaction
Ratings	% of Students			
Always effective	46.67%			86.57%
Sometimes effective	28.57%			
Just satisfactorily	14.29%			
Generally ineffective	9.52%			
Very poor	0.95%			
				Remark
				Excellent

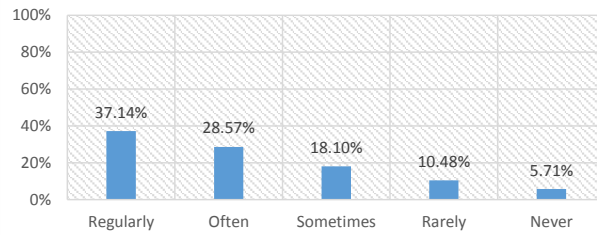
4. The teacher's approach to teaching can best be described as		100% 80% 60% 40% 20% 0%		% Satisfaction
Ratings	% of Students			
Excellent	29.52%			85.43%
Very good	50.48%			
Good	15.24%			
Fair	2.86%			
Poor	1.90%			
				Remark
				Excellent

5. Fairness of the internal evaluation process by the teachers.		100% 80% 60% 40% 20% 0%		% Satisfaction
Ratings	% of Students			
Always fair	44.76%			87.86%
Usually fair	37.14%			
Sometimes unfair	12.38%			
Usually unfair	3.81%			
Unfair	1.90%			
				Remark
				Excellent

6. Was your performance in assignments discussed with you?		100% 80% 60% 40% 20% 0%		% Satisfaction
Ratings	% of Students			
Every time	40.00%			85.00%
Usually	35.24%			
Occasionally/ Sometimes	14.29%			
Rarely	5.71%			
Never	4.76%			
				Remark
				Very Good

7. The institute takes active interest in promoting internship, field visit opportunities for students.

Ratings	% of Students
Regularly	37.14%
Often	28.57%
Sometimes	18.10%
Rarely	10.48%
Never	5.71%



% Satisfaction

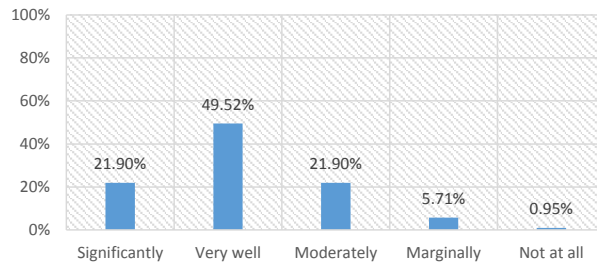
82.14%

Remark

Very Good

8. The teaching and mentoring process in your institution facilitates you in cognitive, social and emotional growth.

Ratings	% of Students
Significantly	21.90%
Very well	49.52%
Moderately	21.90%
Marginally	5.71%
Not at all	0.95%



% Satisfaction

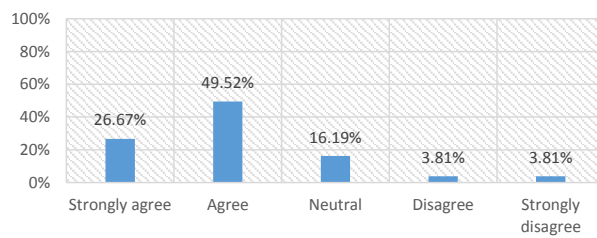
82.86%

Remark

Very Good

9. The institution provides multiple opportunities to learn and grow.

Ratings	% of Students
Strongly agree	26.67%
Agree	49.52%
Neutral	16.19%
Disagree	3.81%
Strongly disagree	3.81%



% Satisfaction

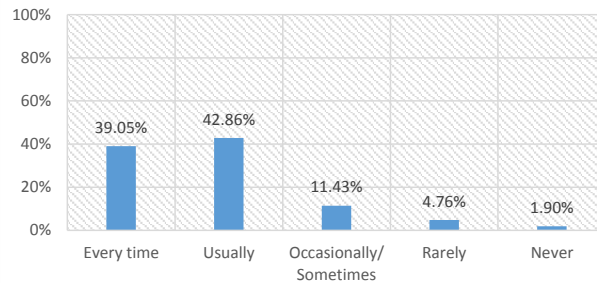
83.71%

Remark

Very Good

10. Teachers inform you about your expected competencies, course outcomes and programme outcomes and review the course syllabus in the class.

Ratings	% of Students
Every time	39.05%
Usually	42.86%
Occasionally/ Sometimes	11.43%
Rarely	4.76%
Never	1.90%



% Satisfaction

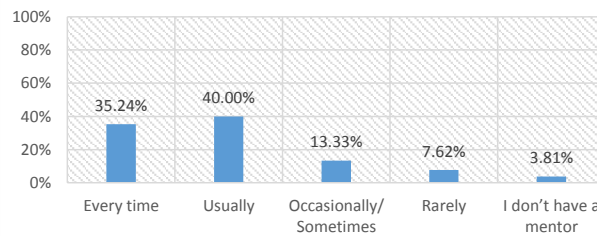
86.86%

Remark

Excellent

11. Your mentor does a necessary follow-up with an assigned task to you.

Ratings	% of Students
Every time	35.24%
Usually	40.00%
Occasionally/ Sometimes	13.33%
Rarely	7.62%
I don't have a mentor	3.81%



% Satisfaction

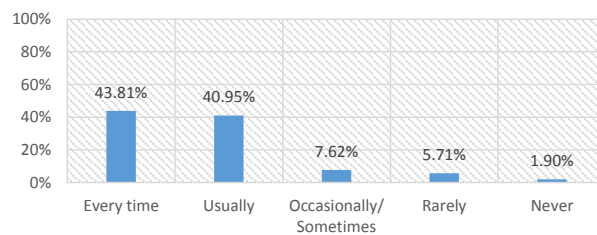
84.29%

Remark

Very Good

12. The teachers illustrate the concepts through examples and applications.

Ratings	% of Students
Every time	43.81%
Usually	40.95%
Occasionally/ Sometimes	7.62%
Rarely	5.71%
Never	1.90%



% Satisfaction

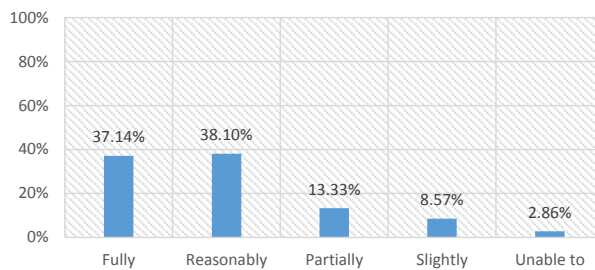
87.86%

Remark

Excellent

13. The teachers identify your strengths and encourage you with providing right level of challenges.

Ratings	% of Students
Fully	37.14%
Reasonably	38.10%
Partially	13.33%
Slightly	8.57%
Unable to	2.86%



% Satisfaction

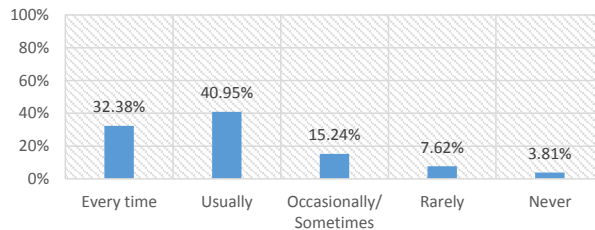
84.71%

Remark

Very Good

14. Teachers are able to identify your weaknesses and help you to overcome them.

Ratings	% of Students
Every time	32.38%
Usually	40.95%
Occasionally/ Sometimes	15.24%
Rarely	7.62%
Never	3.81%



% Satisfaction

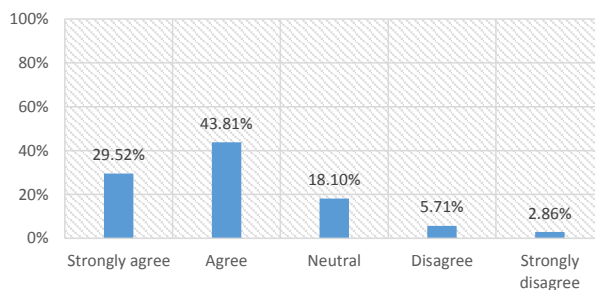
83.57%

Remark

Very Good

15. The institution makes effort to engage students in the monitoring, review and continuous quality improvement of the teaching learning

Ratings	% of Students
Strongly agree	29.52%
Agree	43.81%
Neutral	18.10%
Disagree	5.71%
Strongly disagree	2.86%



% Satisfaction

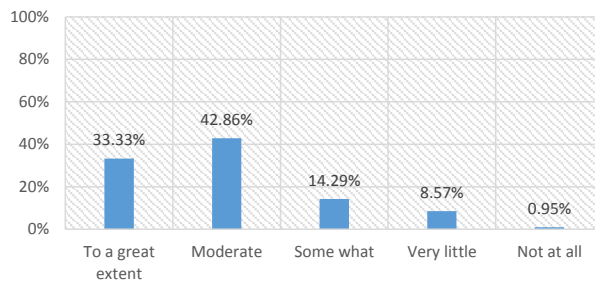
83.71%

Remark

Very Good

16. The institute/ teachers use student centric methods, such as experiential learning, participative learning and problem solving methodologies for enhancing learning experiences.

Ratings	% of Students
To a great extent	33.33%
Moderate	42.86%
Some what	14.29%
Very little	8.57%
Not at all	0.95%



% Satisfaction

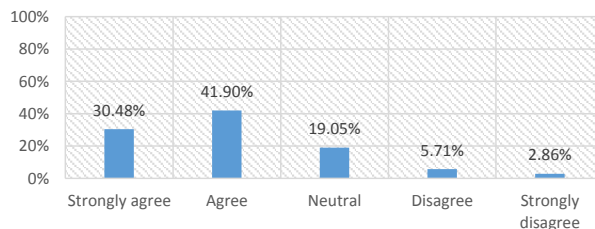
84.86%

Remark

Very Good

17. Teachers encourage you to participate in extracurricular activities.

Ratings	% of Students
Strongly agree	30.48%
Agree	41.90%
Neutral	19.05%
Disagree	5.71%
Strongly disagree	2.86%



% Satisfaction

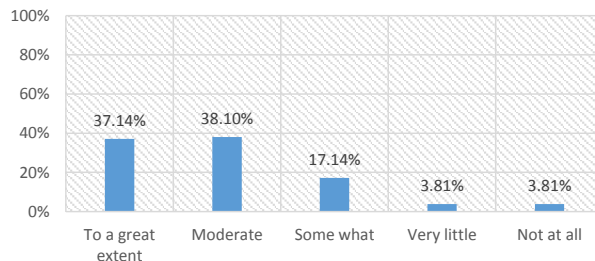
83.71%

Remark

Very Good

18. Efforts are made by the institute/ teachers to inculcate soft skills, life skills and employability skills to make you ready for the world of work.

Ratings	% of Students
To a great extent	37.14%
Moderate	38.10%
Some what	17.14%
Very little	3.81%
Not at all	3.81%



% Satisfaction

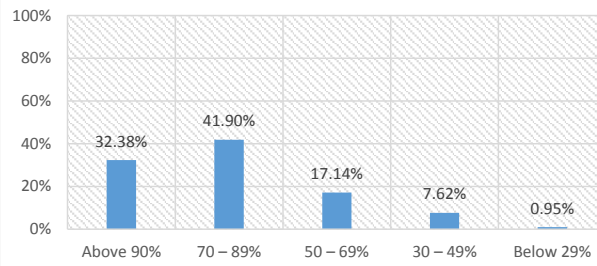
85.14%

Remark

Excellent

19. What percentage of teachers use ICT tools such as LCD projector, Multimedia, etc. while teaching.

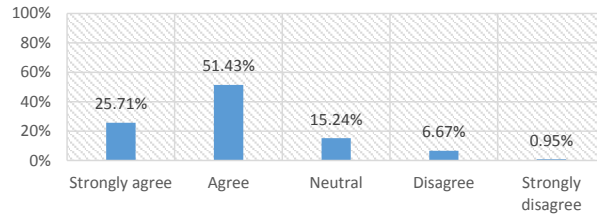
Ratings	% of Students
Above 90%	32.38%
70 – 89%	41.90%
50 – 69%	17.14%
30 – 49%	7.62%
Below 29%	0.95%



% Satisfaction
84.57%
Remark
Very Good

20. The overall quality of teaching-learning process in your institute is very good.

Ratings	% of Students
Strongly agree	25.71%
Agree	51.43%
Neutral	15.24%
Disagree	6.67%
Strongly disagree	0.95%



% Satisfaction
84.14%
Remark
Very Good

Prof. Amit Tajne
Head of Department
Mechanical Engineering

S. B. JAIN INSTITUTE OF TECHNOLOGY, MANAGEMENT & RESEARCH, NAGPUR.



(An Autonomous Institute, Affiliated to RTMNU, Nagpur)
DEPARTMENT OF MECHANICAL ENGINEERING



Vision: Emerge as an excellent centre for Mechanical Engineering education

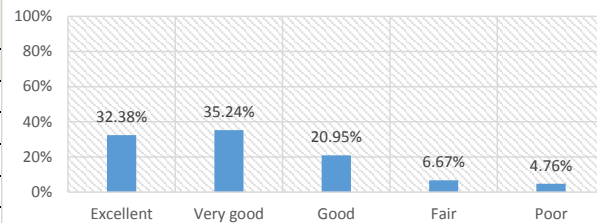
STUDENT SATISFACTION SURVEY (SESSION 2021-22 ODD SEM)

Part-B: Institutional Facilities and Support

Year/Semester/Section: III/V/A & B

1. Adequacy of Laboratory facilities during online teaching learning

Ratings	% of Students
Excellent	32.38%
Very good	35.24%
Good	20.95%
Fair	6.67%
Poor	4.76%



% Satisfaction

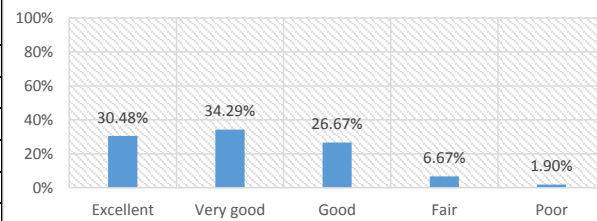
82.57%

Remark

Very Good

2. Availability of learning resources (PPTs, pdfs, notes, contents etc.)

Ratings	% of Students
Excellent	30.48%
Very good	34.29%
Good	26.67%
Fair	6.67%
Poor	1.90%



% Satisfaction

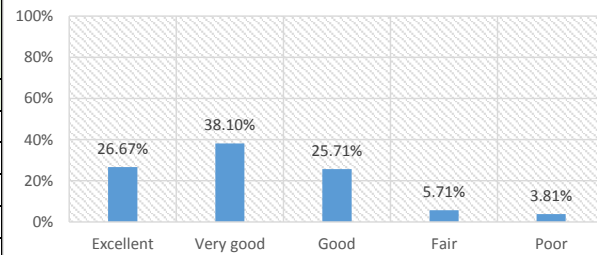
82.71%

Remark

Very Good

3. Mechanism and approach to provide exposure to external world through Guest Lectures, Expert Talks etc.

Ratings	% of Students
Excellent	26.67%
Very good	38.10%
Good	25.71%
Fair	5.71%
Poor	3.81%



% Satisfaction

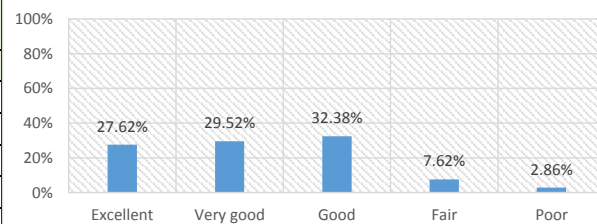
81.71%

Remark

Very Good

4. IT connectivity with Faculties during online classes.

Ratings	% of Students
Excellent	27.62%
Very good	29.52%
Good	32.38%
Fair	7.62%
Poor	2.86%



% Satisfaction

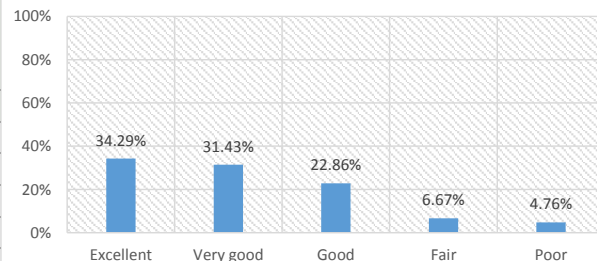
80.71%

Remark

Very Good

5. Overall approach and commitment of the Department towards providing quality Technical and Professional Education.

Ratings	% of Students
Excellent	34.29%
Very good	31.43%
Good	22.86%
Fair	6.67%
Poor	4.76%



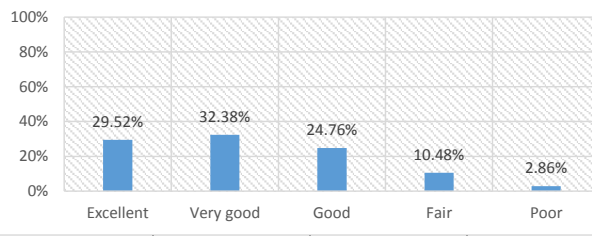
% Satisfaction

82.57%

Remark

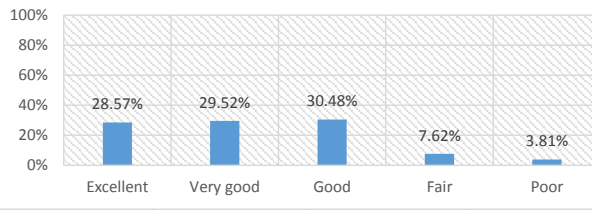
Very Good

6. Mechanism and approach to deal with students/parents grievances	
Ratings	% of Students
Excellent	29.52%
Very good	32.38%
Good	24.76%
Fair	10.48%
Poor	2.86%



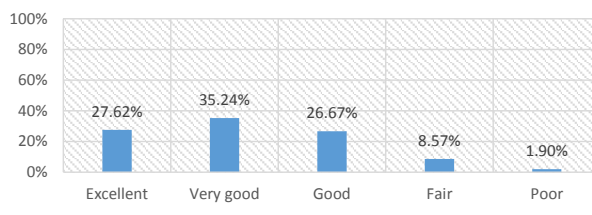
% Satisfaction
81.29%
Remark
Very Good

7. Students Guidance and mentoring facilities	
Ratings	% of Students
Excellent	28.57%
Very good	29.52%
Good	30.48%
Fair	7.62%
Poor	3.81%



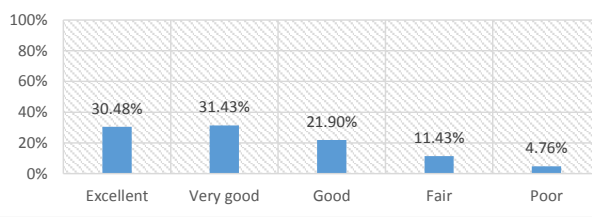
% Satisfaction
80.71%
Remark
Very Good

8. Use of modern tools and methods	
Ratings	% of Students
Excellent	27.62%
Very good	35.24%
Good	26.67%
Fair	8.57%
Poor	1.90%



% Satisfaction
81.71%
Remark
Very Good

9. Library Facility	
Ratings	% of Students
Excellent	30.48%
Very good	31.43%
Good	21.90%
Fair	11.43%
Poor	4.76%



% Satisfaction
80.71%
Remark
Very Good

Prof. Amit Tajne
Head of Department
Mechanical Engineering