



**STUDENT SATISFACTION SURVEY (SESSION 2021-22 EVEN SEM)**

**Part-A: Teaching Learning Process**

Year/Semester/Section: II/IV/A & B

1. How much of the syllabus was covered in the class?		80% 60% 40% 20% 0%		% Satisfaction
% of Syllabus	% of Students			92.17%
85 to 100%	73.20%			<b>Remark</b> <b>Excellent</b>
70 to 84%	18.56%			
55 to 69%	5.15%			
30 to 54%	2.06%			
Below 30%	1.03%			

2. How well did the teachers prepare for the classes?		100% 80% 60% 40% 20% 0%		% Satisfaction
Ratings	% of Students			85.74%
Thoroughly	40.59%			<b>Remark</b> <b>Excellent</b>
Satisfactorily	51.49%			
Poorly	5.94%			
Indifferently	0.00%			
Won't teach at all	1.98%			

3. How well were the teachers able to communicate?		100% 80% 60% 40% 20% 0%		% Satisfaction
Ratings	% of Students			86.74%
Always effective	48.98%			<b>Remark</b> <b>Excellent</b>
Sometimes effective	37.76%			
Just satisfactorily	11.22%			
Generally ineffective	2.04%			
Very poor	0.00%			

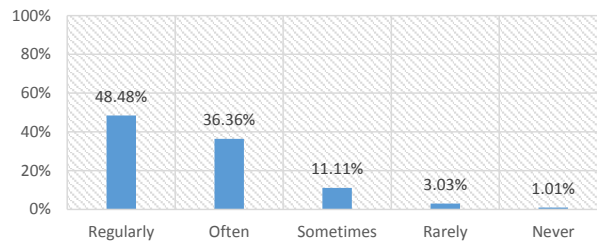
4. The teacher's approach to teaching can best be described as		100% 80% 60% 40% 20% 0%		% Satisfaction
Ratings	% of Students			84.73%
Excellent	38.71%			<b>Remark</b> <b>Very Good</b>
Very good	49.46%			
Good	8.60%			
Fair	3.23%			
Poor	0.00%			

5. Fairness of the internal evaluation process by the teachers.		100% 80% 60% 40% 20% 0%		% Satisfaction
Ratings	% of Students			85.11%
Always fair	45.10%			<b>Remark</b> <b>Excellent</b>
Usually fair	39.22%			
Sometimes unfair	12.75%			
Usually unfair	1.96%			
Unfair	0.98%			

6. Was your performance in assignments discussed with you?		100% 80% 60% 40% 20% 0%		% Satisfaction
Ratings	% of Students			83.80%
Every time	47.00%			<b>Remark</b> <b>Very Good</b>
Usually	34.00%			
Occasionally/ Sometimes	13.00%			
Rarely	3.00%			
Never	3.00%			

**7. The institute takes active interest in promoting internship, field visit opportunities for students.**

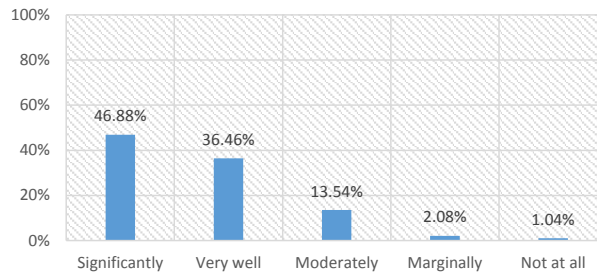
Ratings	% of Students
Regularly	48.48%
Often	36.36%
Sometimes	11.11%
Rarely	3.03%
Never	1.01%



**% Satisfaction**  
**85.65%**  
**Remark**  
**Excellent**

**8. The teaching and mentoring process in your institution facilitates you in cognitive, social and emotional growth.**

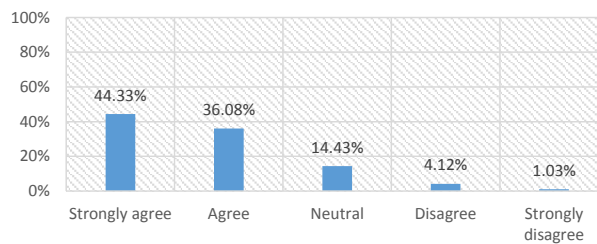
Ratings	% of Students
Significantly	46.88%
Very well	36.46%
Moderately	13.54%
Marginally	2.08%
Not at all	1.04%



**% Satisfaction**  
**85.21%**  
**Remark**  
**Excellent**

**9. The institution provides multiple opportunities to learn and grow.**

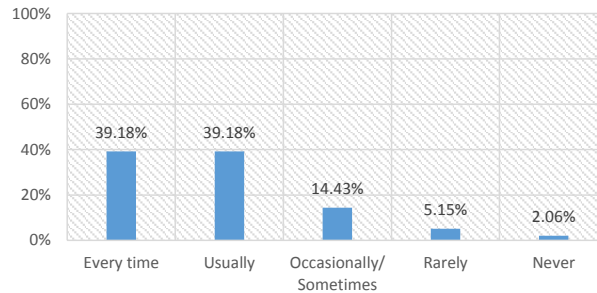
Ratings	% of Students
Strongly agree	44.33%
Agree	36.08%
Neutral	14.43%
Disagree	4.12%
Strongly disagree	1.03%



**% Satisfaction**  
**83.71%**  
**Remark**  
**Very Good**

**10. Teachers inform you about your expected competencies, course outcomes and programme outcomes and review the course syllabus in the class.**

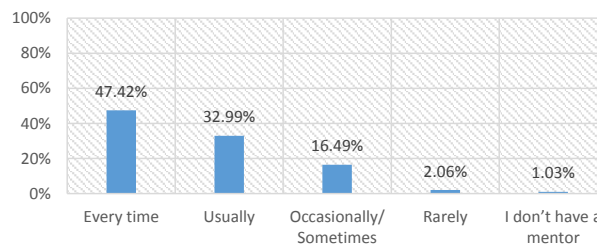
Ratings	% of Students
Every time	39.18%
Usually	39.18%
Occasionally/ Sometimes	14.43%
Rarely	5.15%
Never	2.06%



**% Satisfaction**  
**81.65%**  
**Remark**  
**Very Good**

**11. Your mentor does a necessary follow-up with an assigned task to you.**

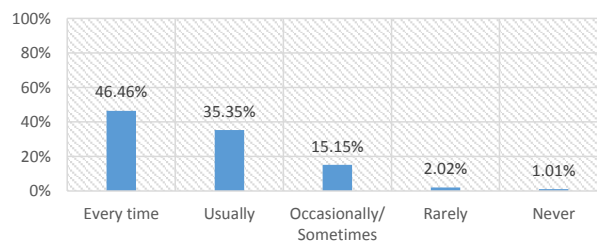
Ratings	% of Students
Every time	47.42%
Usually	32.99%
Occasionally/ Sometimes	16.49%
Rarely	2.06%
I don't have a mentor	1.03%



**% Satisfaction**  
**84.74%**  
**Remark**  
**Very Good**

**12. The teachers illustrate the concepts through examples and applications.**

Ratings	% of Students
Every time	46.46%
Usually	35.35%
Occasionally/ Sometimes	15.15%
Rarely	2.02%
Never	1.01%



**% Satisfaction**  
**84.84%**  
**Remark**  
**Very Good**

<b>13. The teachers identify your strengths and encourage you with providing right level of challenges.</b>			<table border="1"> <tr><td colspan="2">% Satisfaction</td></tr> <tr><td colspan="2"><b>84.69%</b></td></tr> <tr><td colspan="2"><b>Remark</b></td></tr> <tr><td colspan="2"><b>Very Good</b></td></tr> </table>	% Satisfaction		<b>84.69%</b>		<b>Remark</b>		<b>Very Good</b>	
% Satisfaction											
<b>84.69%</b>											
<b>Remark</b>											
<b>Very Good</b>											
Ratings	% of Students										
Fully	51.02%										
Reasonably	30.61%										
Partially	11.22%										
Slightly	5.10%										
Unable to	2.04%										

<b>14. Teachers are able to identify your weaknesses and help you to overcome them.</b>			<table border="1"> <tr><td colspan="2">% Satisfaction</td></tr> <tr><td colspan="2"><b>82.88%</b></td></tr> <tr><td colspan="2"><b>Remark</b></td></tr> <tr><td colspan="2"><b>Very Good</b></td></tr> </table>	% Satisfaction		<b>82.88%</b>		<b>Remark</b>		<b>Very Good</b>	
% Satisfaction											
<b>82.88%</b>											
<b>Remark</b>											
<b>Very Good</b>											
Ratings	% of Students										
Every time	43.30%										
Usually	35.05%										
Occasionally/ Sometimes	16.49%										
Rarely	3.09%										
Never	2.06%										

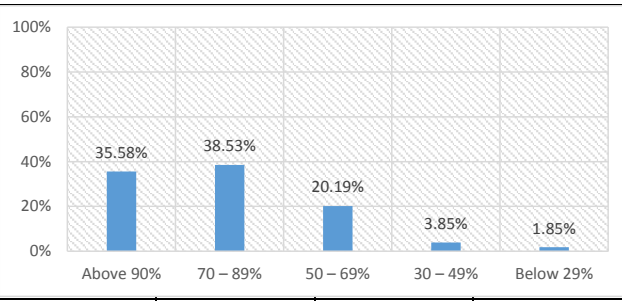
<b>15. The institution makes effort to engage students in the monitoring, review and continuous quality improvement of the teaching learning process.</b>			<table border="1"> <tr><td colspan="2">% Satisfaction</td></tr> <tr><td colspan="2"><b>84.32%</b></td></tr> <tr><td colspan="2"><b>Remark</b></td></tr> <tr><td colspan="2"><b>Very Good</b></td></tr> </table>	% Satisfaction		<b>84.32%</b>		<b>Remark</b>		<b>Very Good</b>	
% Satisfaction											
<b>84.32%</b>											
<b>Remark</b>											
<b>Very Good</b>											
Ratings	% of Students										
Strongly agree	45.36%										
Agree	36.08%										
Neutral	14.43%										
Disagree	3.09%										
Strongly disagree	1.03%										

<b>16. The institute/ teachers use student centric methods, such as experiential learning, participative learning and problem solving methodologies for enhancing learning experiences.</b>			<table border="1"> <tr><td colspan="2">% Satisfaction</td></tr> <tr><td colspan="2"><b>83.92%</b></td></tr> <tr><td colspan="2"><b>Remark</b></td></tr> <tr><td colspan="2"><b>Very Good</b></td></tr> </table>	% Satisfaction		<b>83.92%</b>		<b>Remark</b>		<b>Very Good</b>	
% Satisfaction											
<b>83.92%</b>											
<b>Remark</b>											
<b>Very Good</b>											
Ratings	% of Students										
To a great extent	42.27%										
Moderate	39.18%										
Some what	15.46%										
Very little	2.06%										
Not at all	1.03%										

<b>17. Teachers encourage you to participate in extracurricular activities.</b>			<table border="1"> <tr><td colspan="2">% Satisfaction</td></tr> <tr><td colspan="2"><b>82.65%</b></td></tr> <tr><td colspan="2"><b>Remark</b></td></tr> <tr><td colspan="2"><b>Very Good</b></td></tr> </table>	% Satisfaction		<b>82.65%</b>		<b>Remark</b>		<b>Very Good</b>	
% Satisfaction											
<b>82.65%</b>											
<b>Remark</b>											
<b>Very Good</b>											
Ratings	% of Students										
Strongly agree	43.88%										
Agree	31.63%										
Neutral	19.39%										
Disagree	4.08%										
Strongly disagree	1.02%										

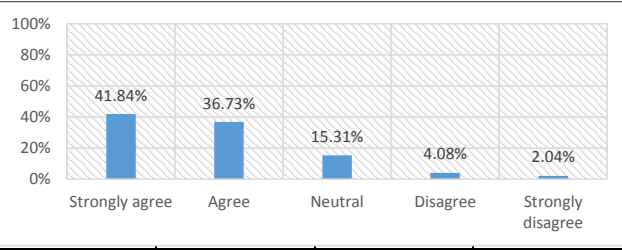
<b>18. Efforts are made by the institute/ teachers to inculcate soft skills, life skills and employability skills to make you ready for the world of work.</b>			<table border="1"> <tr><td colspan="2">% Satisfaction</td></tr> <tr><td colspan="2"><b>82.47%</b></td></tr> <tr><td colspan="2"><b>Remark</b></td></tr> <tr><td colspan="2"><b>Very Good</b></td></tr> </table>	% Satisfaction		<b>82.47%</b>		<b>Remark</b>		<b>Very Good</b>	
% Satisfaction											
<b>82.47%</b>											
<b>Remark</b>											
<b>Very Good</b>											
Ratings	% of Students										
To a great extent	42.27%										
Moderate	37.11%										
Some what	13.40%										
Very little	5.15%										
Not at all	2.06%										

<b>19. What percentage of teachers use ICT tools such as LCD projector, Multimedia, etc. while teaching.</b>	
Ratings	% of Students
Above 90%	35.58%
70 – 89%	38.53%
50 – 69%	20.19%
30 – 49%	3.85%
Below 29%	1.85%



<b>% Satisfaction</b>
<b>80.43%</b>
<b>Remark</b>
<b>Very Good</b>

<b>20. The overall quality of teaching-learning process in your institute is very good.</b>	
Ratings	% of Students
Strongly agree	41.84%
Agree	36.73%
Neutral	15.31%
Disagree	4.08%
Strongly disagree	2.04%



<b>% Satisfaction</b>
<b>82.45%</b>
<b>Remark</b>
<b>Very Good</b>

**Prof. Amit Tajne**  
 Head of Department  
 Mechanical Engineering

**S. B. JAIN INSTITUTE OF TECHNOLOGY, MANAGEMENT & RESEARCH, NAGPUR.**



(An Autonomous Institute, Affiliated to RTMNU, Nagpur)

**DEPARTMENT OF MECHANICAL ENGINEERING**

*Vision: Emerge as an excellent centre for Mechanical Engineering education*



**STUDENT SATISFACTION SURVEY (SESSION 2021-22 EVEN SEM)**

**Part-B: Institutional Facilities and Support**

**Year/Semester/Section: II/IV/A & B**

1. Adequacy of Laboratory facilities (Number of set-ups/ equipments /tools etc.)		100% 80% 60% 40% 20% 0%		% Satisfaction
Ratings	% of Students			77.20%
Excellent	29.03%			<b>Remark</b> <b>Very Good</b>
Very good	37.63%			
Good	26.88%			
Fair	3.23%			
Poor	3.23%			

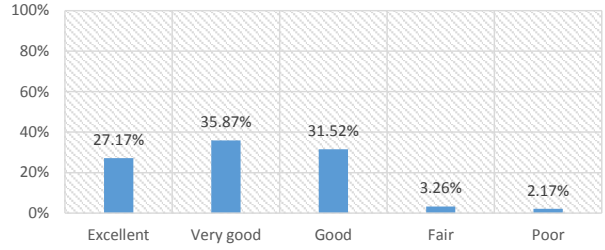
2. Mechanism and approach to provide exposure to external world through Internships, Field Visits, Guest Lectures, Expert Talks etc.		100% 80% 60% 40% 20% 0%		% Satisfaction
Ratings	% of Students			76.73%
Excellent	23.91%			<b>Remark</b> <b>Very Good</b>
Very good	41.30%			
Good	29.35%			
Fair	5.43%			
Poor	0.00%			

3. Infrastructure (Furniture/Black Board / Illumination/Ventilation etc.)		100% 80% 60% 40% 20% 0%		% Satisfaction
Ratings	% of Students			77.58%
Excellent	28.57%			<b>Remark</b> <b>Very Good</b>
Very good	38.46%			
Good	26.37%			
Fair	5.49%			
Poor	1.10%			

4. Mechanism and approach to deal with students/parents grievances		100% 80% 60% 40% 20% 0%		% Satisfaction
Ratings	% of Students			76.70%
Excellent	25.27%			<b>Remark</b> <b>Very Good</b>
Very good	40.66%			
Good	27.47%			
Fair	5.49%			
Poor	1.10%			

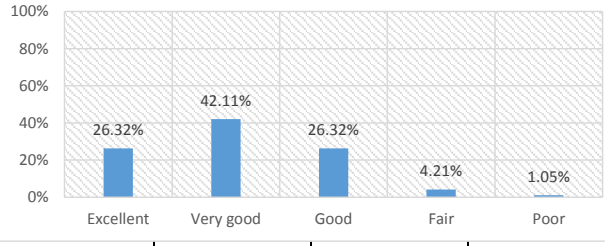
5. Students guidance and mentoring facilities		100% 80% 60% 40% 20% 0%		% Satisfaction
Ratings	% of Students			76.92%
Excellent	25.27%			<b>Remark</b> <b>Very Good</b>
Very good	38.46%			
Good	32.97%			
Fair	2.20%			
Poor	1.10%			

6. Support for co-curricular and extra-curricular activities	
Ratings	% of Students
Excellent	27.17%
Very good	35.87%
Good	31.52%
Fair	3.26%
Poor	2.17%



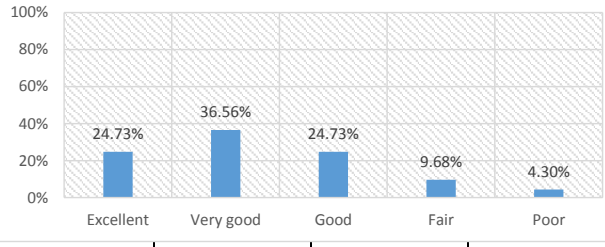
<b>% Satisfaction</b>
<b>76.52%</b>
<b>Remark</b>
<b>Very Good</b>

7. Library Facility	
Ratings	% of Students
Excellent	26.32%
Very good	42.11%
Good	26.32%
Fair	4.21%
Poor	1.05%



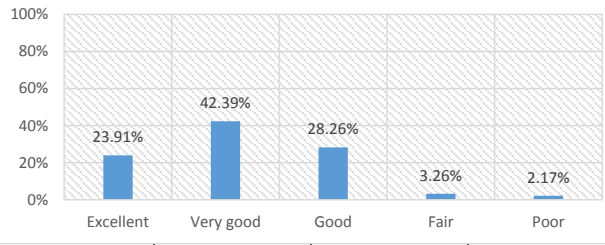
<b>% Satisfaction</b>
<b>77.69%</b>
<b>Remark</b>
<b>Very Good</b>

8. Sports Facility	
Ratings	% of Students
Excellent	24.73%
Very good	36.56%
Good	24.73%
Fair	9.68%
Poor	4.30%



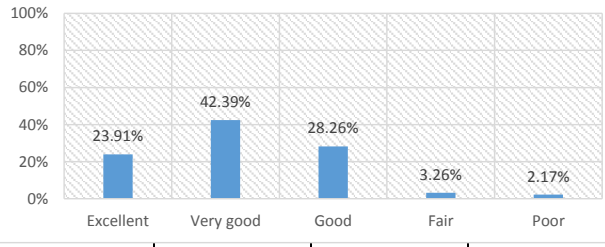
<b>% Satisfaction</b>
<b>73.55%</b>
<b>Remark</b>
<b>Very Good</b>

9. Canteen Facility	
Ratings	% of Students
Excellent	23.91%
Very good	42.39%
Good	28.26%
Fair	3.26%
Poor	2.17%



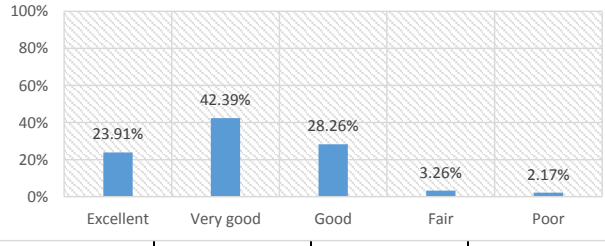
<b>% Satisfaction</b>
<b>76.52%</b>
<b>Remark</b>
<b>Very Good</b>

10. Transport Facility	
Ratings	% of Students
Excellent	22.58%
Very good	38.71%
Good	26.88%
Fair	6.45%
Poor	5.38%



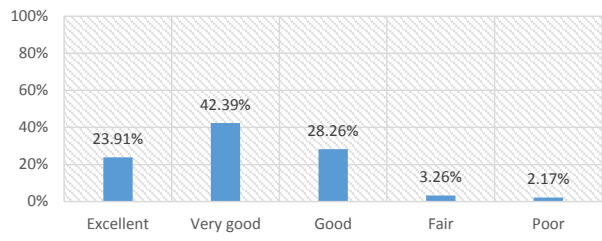
<b>% Satisfaction</b>
<b>73.33%</b>
<b>Remark</b>
<b>Very Good</b>

11. Internet Facility	
Ratings	% of Students
Excellent	21.51%
Very good	30.11%
Good	33.33%
Fair	4.30%
Poor	10.75%



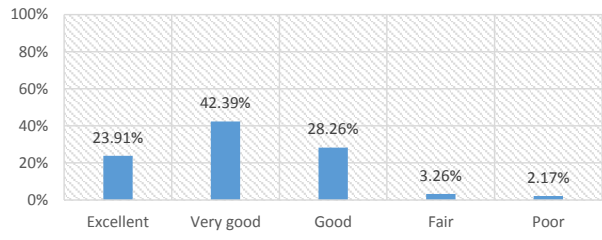
<b>% Satisfaction</b>
<b>69.47%</b>
<b>Remark</b>
<b>Good</b>

12. Housekeeping	
Ratings	% of Students
Excellent	25.00%
Very good	35.87%
Good	31.52%
Fair	3.26%
Poor	4.35%



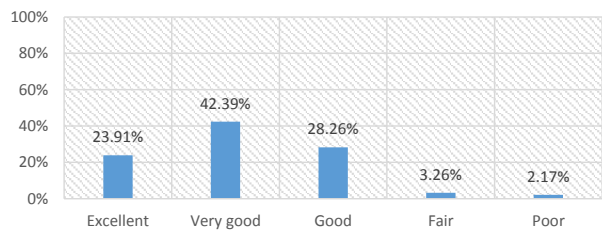
<b>% Satisfaction</b>
<b>74.78%</b>
<b>Remark</b>
<b>Very Good</b>

13. First Aid Facility	
Ratings	% of Students
Excellent	27.66%
Very good	29.79%
Good	36.17%
Fair	2.13%
Poor	4.26%



<b>% Satisfaction</b>
<b>74.90%</b>
<b>Remark</b>
<b>Very Good</b>

14. Security Facility	
Ratings	% of Students
Excellent	26.37%
Very good	35.16%
Good	30.77%
Fair	3.30%
Poor	4.40%



<b>% Satisfaction</b>
<b>75.16%</b>
<b>Remark</b>
<b>Very Good</b>

**Prof. Amit Tajne**  
Head of Department  
Mechanical Engineering