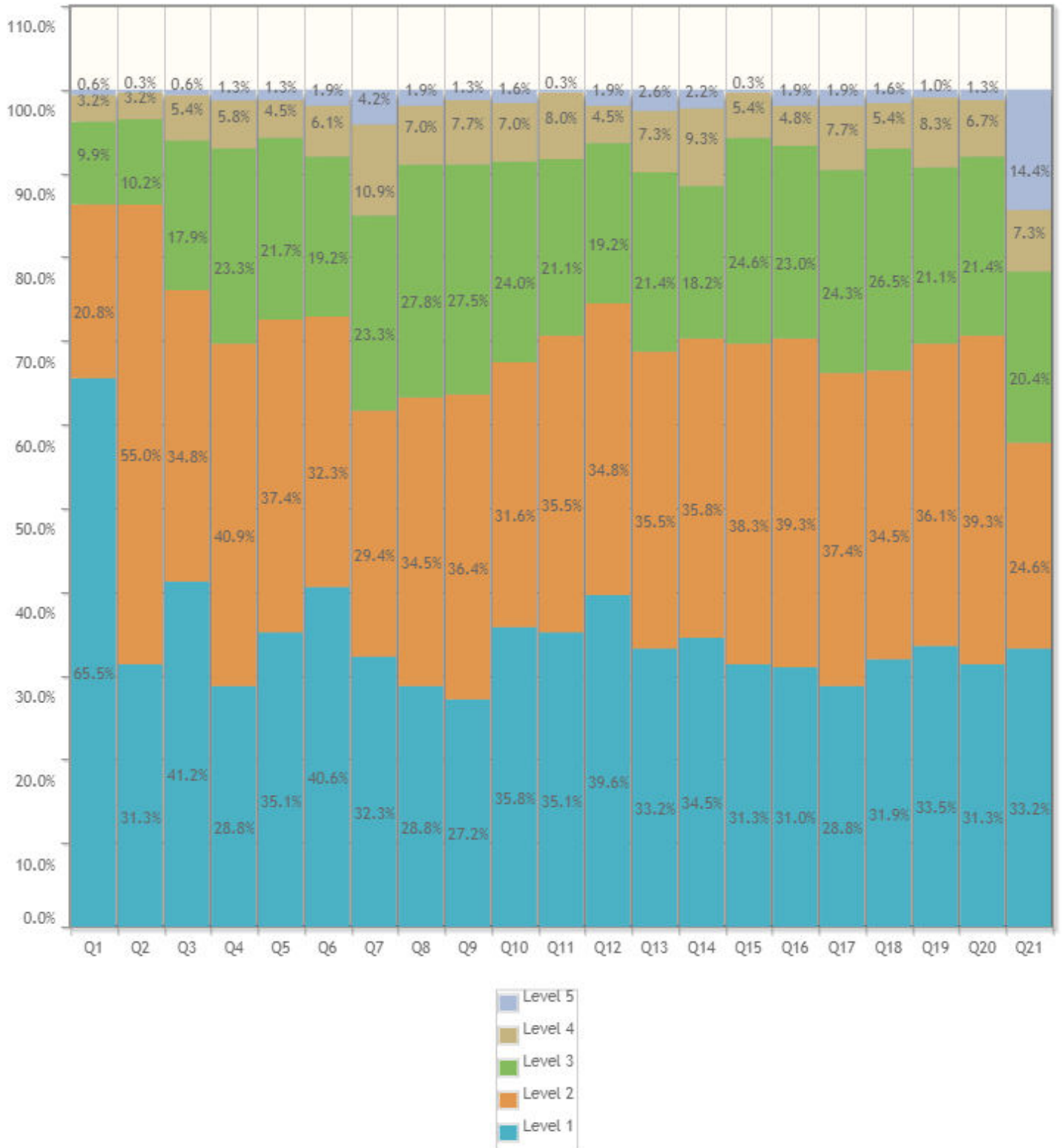




Survey Details - Detailed & Summary Report

Survey: 2ND SEMESTER STUDENT SATISFACTION SURVEY (PART A)	Survey Type: Fresh Survey
Survey For: Facility Feedback	Program: First Year Engineering in First Year

Detailed Report



1. How much of the syllabus was covered in the class?	Responses	Weighted Responses	Percent
1. 4 - 85 to 100%	205	1025	65.50%
2. 3 - 70 to 84%	65	260	20.77%
3. 2 - 55 to 69%	31	93	9.90%
4. 1- 30 to 54%	10	20	3.19%
5. 0 -Below 30%	2	2	0.64%



Summary Report

Number of people Responded / Total number of Responders is **313 / 435** People.

Questions	Total Response Count	Weighted Response Percent
How much of the syllabus was covered in the class?	1400	89.46%
How well did the teachers prepare for the classes?	1295	82.75%
How well were the teachers able to communicate?	1285	82.11%
The teacher's approach to teaching can best be described as	1221	78.02%
Fairness of the internal evaluation process by the teachers.	1254	80.13%
Was your performance in assignments discussed with you?	1263	80.70%
The institute takes active interest in promoting internship opportunities for students.	1173	74.95%
The teaching and mentoring process in your institution facilitates you in cognitive, social and emotional growth.	1193	76.23%
The institution provides multiple opportunities to learn and grow	1191	76.10%
Teachers inform you about your expected competencies, course outcomes and programme outcomes and review the course syllabus in the class.	1230	78.59%
Your mentor does a necessary follow-up with an assigned task to you.	1243	79.42%
The teachers illustrate the concepts through examples and applications.	1270	81.15%
The teachers identify your strengths and encourage you with providing right level of challenges.	1029	65.75%
Teachers are able to identify your weaknesses and help you to overcome them.	1224	78.21%
The institution makes effort to engage students in the monitoring, review and continuous quality improvement of the teaching learning process.	996	63.64%
The institute/ teachers use student centric methods, such as experiential learning, participative learning and problem solving methodologies for enhancing learning experiences.	1229	78.53%
Teachers encourage you to participate in extracurricular activities	1200	76.68%
Efforts are made by the institute/ teachers to inculcate soft skills, life skills and employability skills to make you ready for the world of work.	1220	77.96%



Sir Shantilal Badjate Charitable Trust, Nagpur
S. B. Jain Institute of Technology, Management & Research, Nagpur
(Approved by AICTE, An Autonomous Institute) Affiliated to R. T. M. Nagpur University
Department of First Year Engineering

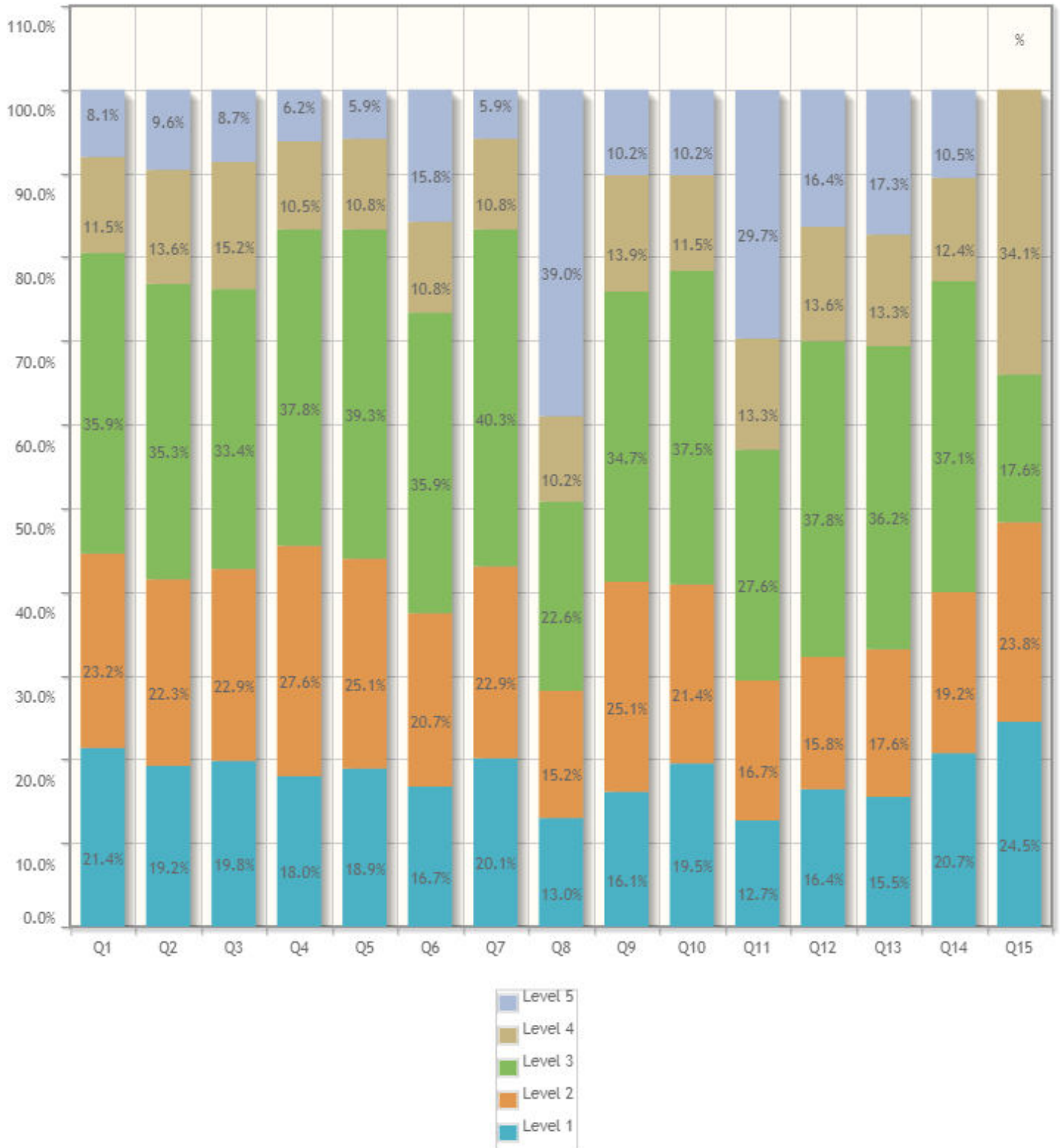
Questions	Total Response Count	Weighted Response Percent
What percentage of teachers uses ICT tools such as PPTs, Multimedia, animations, etc. while teaching.	1230	78.59%
The overall quality of teaching-learning process in your institute is very good	1229	78.53%
Give three observation / suggestions to improve the overall teaching - learning experience in your institution. (Observation/Suggestion may also be a review of any course content of the syllabus/ Content you would have wished to learn).	767	49.01%
Total Feedback	25142	76.50%



Survey Details - Detailed & Summary Report

Survey: 2ND SEMESTER STUDENT SATISFACTION SURVEY (PART B)	Survey Type: Fresh Survey
Survey For: Facility Feedback	Program: First Year Engineering in First Year

Detailed Report



1. Adequacy of Laboratory facilities\n(Number of set-ups/ equipment /tools etc.)	Responses	Weighted Responses	Percent
1. 5. Excellent	69	345	21.36%
2. 4. Very Good	75	300	23.22%
3. 3. Good	116	348	35.91%
4. 2. Fair	37	74	11.46%
5. 1. Poor	26	26	8.05%

Summary Report

Number of people Responded / Total number of Responders is **323 / 435** People.

Questions	Total Response Count	Weighted Response Percent
Adequacy of Laboratory facilities\n(Number of set-ups/ equipment /tools etc.)	1093	67.68%
Mechanism and approach to provide exposure to external world through Internships, Field Visits, Guest Lectures, Expert Talks etc.	1059	65.57%
Infrastructure (Furniture/Black Board / Illumination/Ventilation etc.)	1066	66.01%
Mechanism and approach to deal with students/parents grievances	1100	68.11%
Students guidance and mentoring facilities	1175	72.76%
Support for co-curricular and extra-curricular activities	1007	62.35%
Library Facility	1100	68.11%
Sports Facility	785	48.61%
Canteen Facility	1175	72.76%
Transport Facility	1061	65.70%
Internet Facility	1254	77.65%
Housekeeping	976	60.43%
First Aid Facility	1081	66.93%
Security Facility	933	57.77%
Suggestions, if any:	844	52.26%
Total Feedback	15709	64.85%