



**Department of
Electronics & Telecommunication Engineering**

“Emerge as a center for quality education in Electronics & Telecommunication Engineering, so as to create competent professionals”



**Academic Session 2021-22 (EVEN)
Student Satisfaction Survey Report**

Date:06/05/2022

Class: 4th Year / 8th Semester (Section-A)

Class Incharge: Prof.Amit Kale

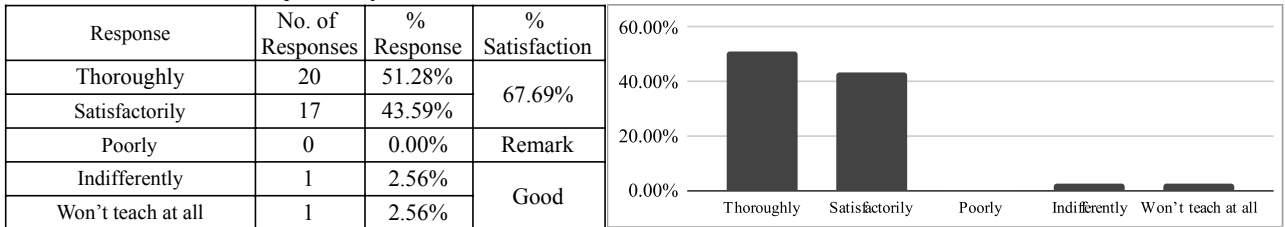
No. of Participants involved in Feedback: **39**

PART-A: Teaching Learning Process

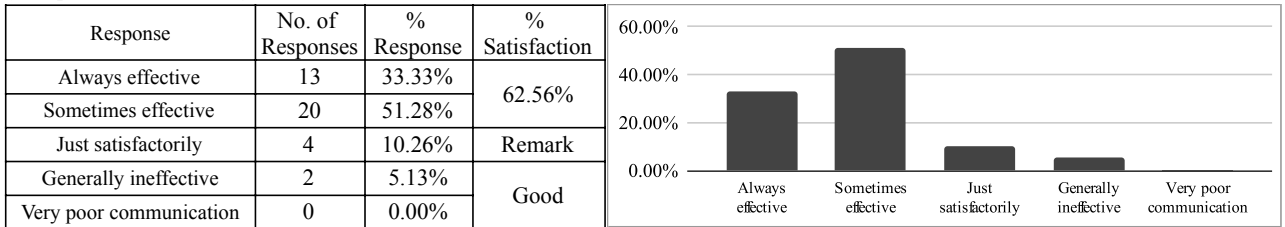
4. The teacher’s approach to teaching can best be described as



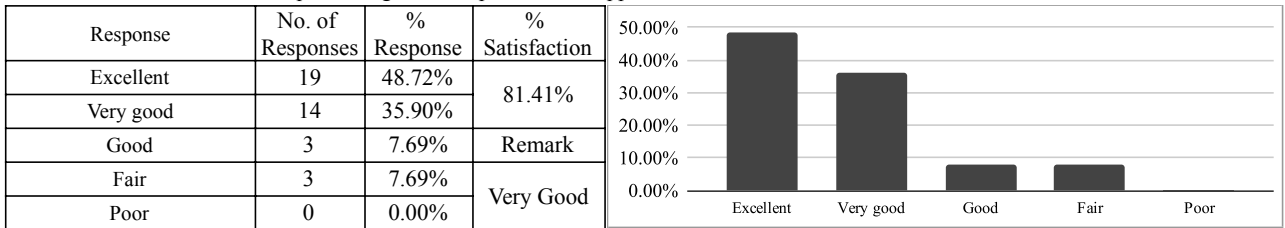
5. Fairness of the internal evaluation process by the teachers.



6. Was your performance in assignments discussed with you?

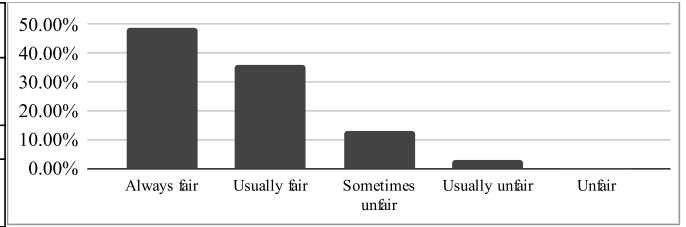


7. The institute takes active interest in promoting internship, field visit opportunities for students.



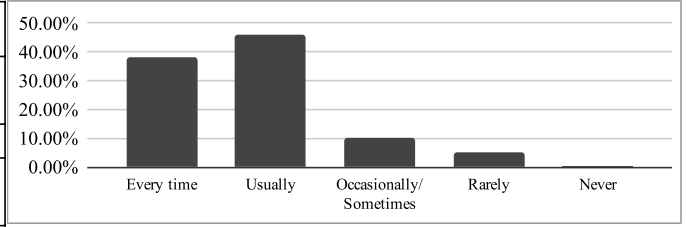
8. The teaching and mentoring process in your institution facilitates you in cognitive, social and emotional growth.

Response	No. of Responses	% Response	% Satisfaction
Always fair	19	48.72%	82.69%
Usually fair	14	35.90%	
Sometimes unfair	5	12.82%	Remark
Usually unfair	1	2.56%	Very Good
Unfair	0	0.00%	



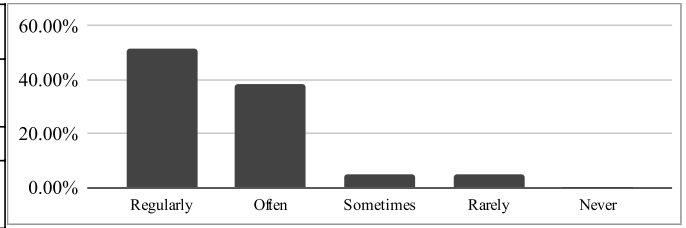
9. The institution provides multiple opportunities to learn and grow.

Response	No. of Responses	% Response	% Satisfaction
Every time	15	38.46%	79.49%
Usually	18	46.15%	
Occasionally/ Sometimes	4	10.26%	Remark
Rarely	2	5.13%	Very Good
Never	0	0.00%	



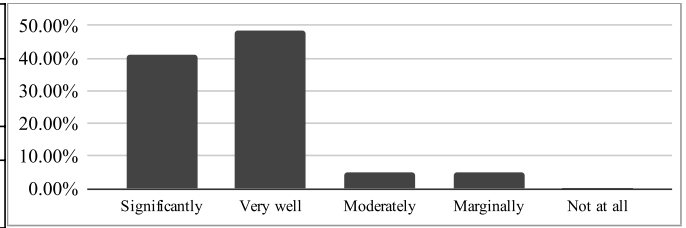
10. Teachers inform you about your expected competencies, course outcomes and programme outcomes and review the course syllabus in the clas

Response	No. of Responses	% Response	% Satisfaction
Regularly	20	51.28%	83.97%
Often	15	38.46%	
Sometimes	2	5.13%	Remark
Rarely	2	5.13%	Very Good
Never	0	0.00%	



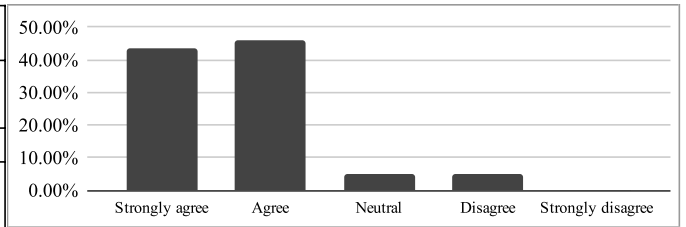
11. Your mentor does a necessary follow-up with an assigned task to you.

Response	No. of Responses	% Response	% Satisfaction
Significantly	16	41.03%	81.41%
Very well	19	48.72%	
Moderately	2	5.13%	Remark
Marginally	2	5.13%	Very Good
Not at all	0	0.00%	



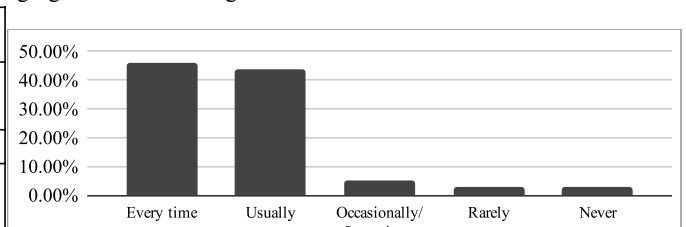
12. The teachers illustrate the concepts through examples and applications.

Response	No. of Responses	% Response	% Satisfaction
Strongly agree	17	43.59%	82.05%
Agree	18	46.15%	
Neutral	2	5.13%	Remark
Disagree	2	5.13%	Very Good
Strongly disagree	0	0.00%	



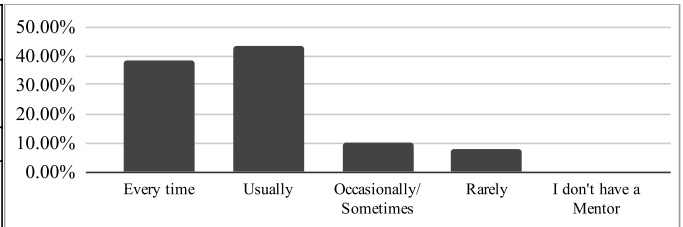
13. The teachers identify your strengths and encourage you with providing right level of challenges.

Response	No. of Responses	% Response	% Satisfaction
Every time	18	46.15%	82.05%
Usually	17	43.59%	
Occasionally/ Sometimes	2	5.13%	Remark
Rarely	1	2.56%	Very Good
Never	1	2.56%	



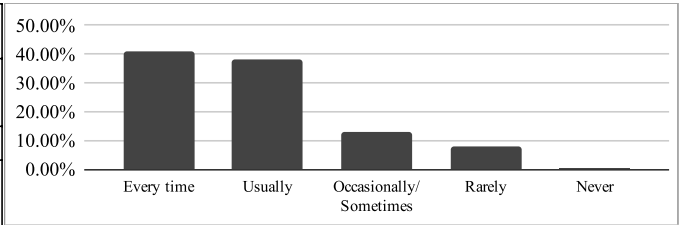
14. Teachers are able to identify your weaknesses and help you to overcome them.

Response	No. of Responses	% Response	% Satisfaction
Every time	15	38.46%	78.21%
Usually	17	43.59%	
Occasionally/ Sometimes	4	10.26%	Remark
Rarely	3	7.69%	Very Good
I don't have a Mentor	0	0.00%	



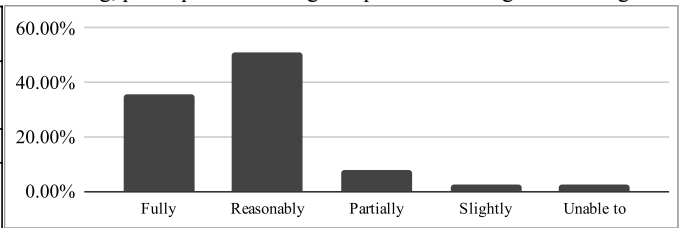
15. The institution makes effort to engage students in the monitoring, review and continuous quality improvement of the teaching learning process

Response	No. of Responses	% Response	% Satisfaction
Every time	16	41.03%	78.21%
Usually	15	38.46%	
Occasionally/ Sometimes	5	12.82%	Remark
Rarely	3	7.69%	Very Good
Never	0	0.00%	



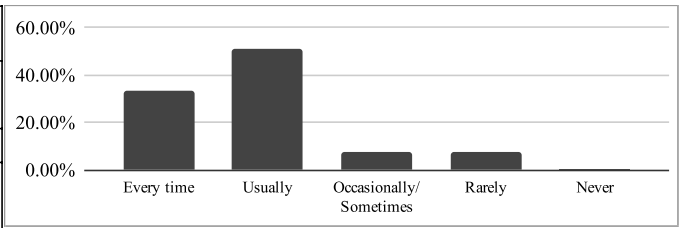
16. The institute/ teachers use student centric methods, such as experiential learning, participative learning and problem solving methodologies fo

Response	No. of Responses	% Response	% Satisfaction
Fully	14	35.90%	78.85%
Reasonably	20	51.28%	
Partially	3	7.69%	Remark
Slightly	1	2.56%	Very Good
Unable to	1	2.56%	



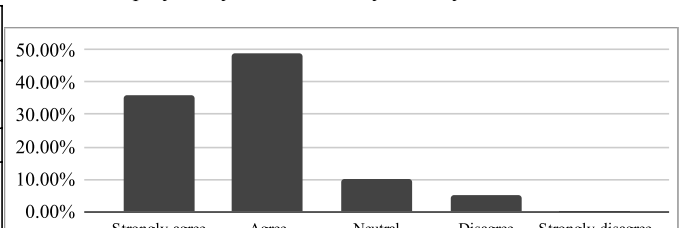
17. Teachers encourage you to participate in extracurricular activities.

Response	No. of Responses	% Response	% Satisfaction
Every time	13	33.33%	77.56%
Usually	20	51.28%	
Occasionally/ Sometimes	3	7.69%	Remark
Rarely	3	7.69%	Very Good
Never	0	0.00%	



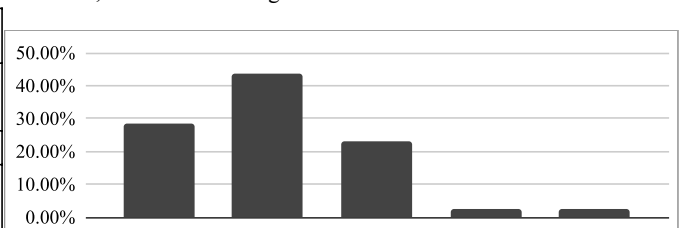
18. Efforts are made by the institute/ teachers to inculcate soft skills, life skills and employability skills to make you ready for the world of work.

Response	No. of Responses	% Response	% Satisfaction
Strongly agree	14	35.90%	78.85%
Agree	19	48.72%	
Neutral	4	10.26%	Remark
Disagree	2	5.13%	Very Good
Strongly disagree	0	0.00%	



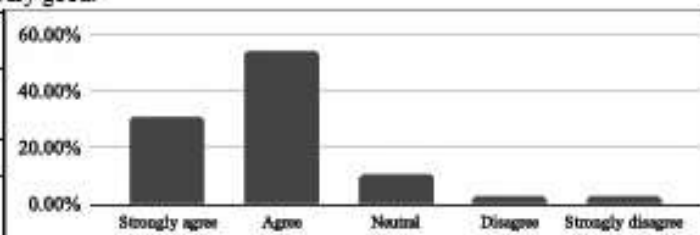
19. What percentage of teachers use ICT tools such as LCD projector, Multimedia, etc. while teaching.

Response	No. of Responses	% Response	% Satisfaction
To a great extent	11	28.21%	73.08%
Moderate	17	43.59%	
Some what	9	23.08%	Remark
Very little	1	2.56%	Very Good
Not at all	1	2.56%	



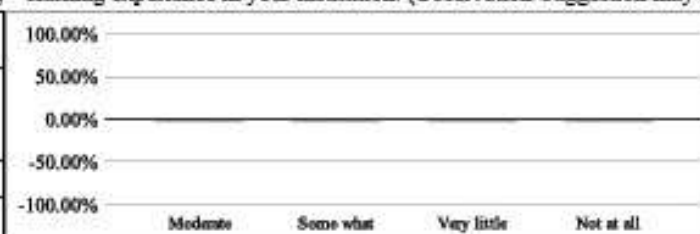
20. The overall quality of teaching-learning process in your institute is very good.

Response	No. of Responses	% Response	% Satisfaction
Strongly agree	12	30.77%	76.92%
Agree	21	53.85%	
Neutral	4	10.26%	Remark
Disagree	1	2.56%	Very Good
Strongly disagree	1	2.56%	



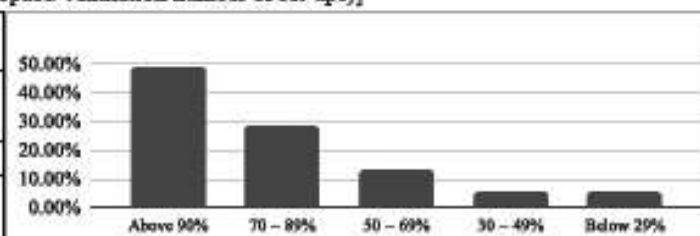
21. Give three observation / suggestions to improve the overall teaching – learning experience in your institution. (Observation/Suggestion may al

Response	No. of Responses	% Response	% Satisfaction
To a great extent	Response (A)	#VALUE !	78.21%
Moderate		0.00%	
Some what		0.00%	Remark
Very little		0.00%	Very Good
Not at all		0.00%	



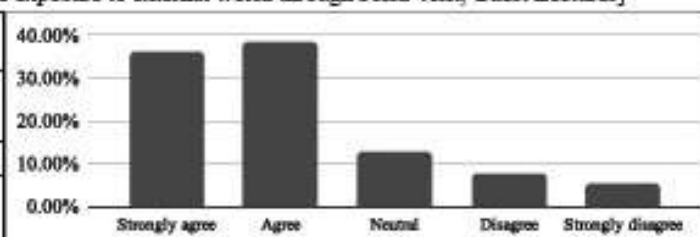
Institutional Facilities and Support [Adequacy of Laboratory facilities (Space/Ventilation/number of set-ups)]

Response	No. of Responses	% Response	% Satisfaction
Above 90%	19	48.72%	82.05%
70 – 89%	11	28.21%	
50 – 69%	5	12.82%	Remark
30 – 49%	2	5.13%	Very Good
Below 29%	2	5.13%	



Institutional Facilities and Support [Mechanism and approach to provide exposure to external world through Field Visit, Guest Lectures]

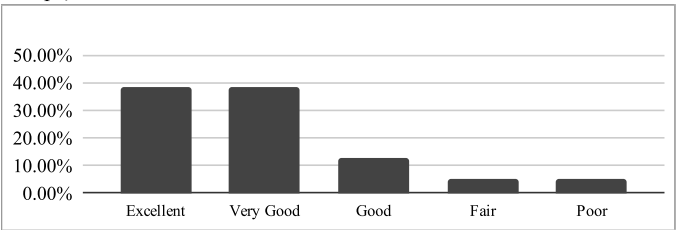
Response	No. of Responses	% Response	% Satisfaction
Strongly agree	14	35.90%	78.46%
Agree	15	38.46%	
Neutral	5	12.82%	Remark
Disagree	3	7.69%	Very Good
Strongly disagree	2	5.13%	



PART-B: Institutional Facilities and Support

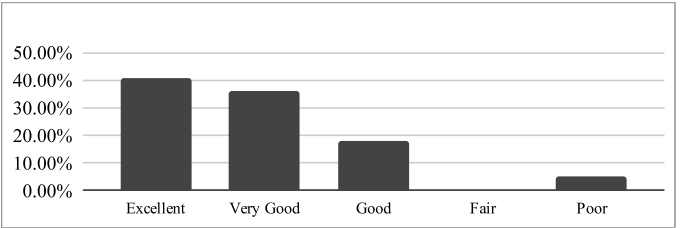
1 Adequacy of Laboratory facilities (Space/Ventilation/number of set-ups)

Response	No. of Responses	% Response	% Satisfaction
Excellent	15	38.46%	80.00%
Very Good	15	38.46%	
Good	5	12.82%	Remark
Fair	2	5.13%	Very Good
Poor	2	5.13%	



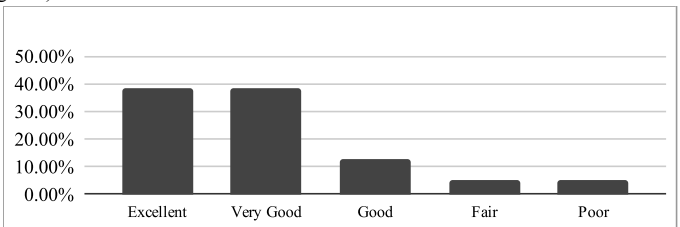
2 Mechanism and approach to provide exposure to external world through Field Visit, Guest Lectures

Response	No. of Responses	% Response	% Satisfaction
Excellent	16	41.03%	81.54%
Very Good	14	35.90%	
Good	7	17.95%	Remark
Fair	0	0.00%	Very Good
Poor	2	5.13%	



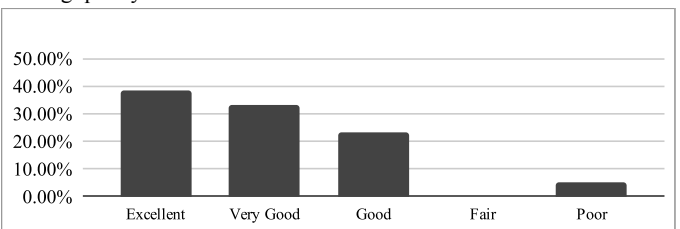
3 Infrastructure (Furniture/Black Board/Illumination/Fans/Flooring etc.)

Response	No. of Responses	% Response	% Satisfaction
Excellent	15	38.46%	80.00%
Very Good	15	38.46%	
Good	5	12.82%	Remark
Fair	2	5.13%	Very Good
Poor	2	5.13%	



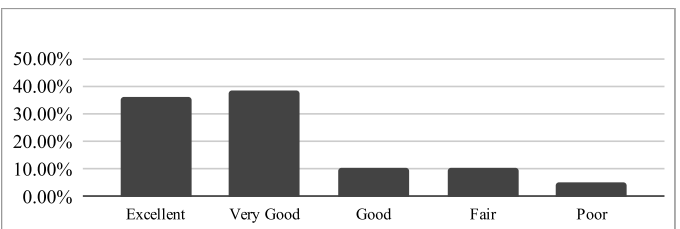
4 Overall approach and commitment of the Department towards providing quality Technical and Professional Education.

Response	No. of Responses	% Response	% Satisfaction
Excellent	15	38.46%	80.00%
Very Good	13	33.33%	
Good	9	23.08%	Remark
Fair	0	0.00%	Very Good
Poor	2	5.13%	



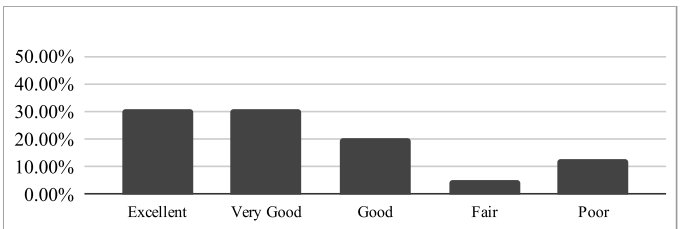
5 Mechanism and approach to deal with students/parents grievances

Response	No. of Responses	% Response	% Satisfaction
Excellent	14	35.90%	77.95%
Very Good	15	38.46%	
Good	4	10.26%	Remark
Fair	4	10.26%	Very Good
Poor	2	5.13%	



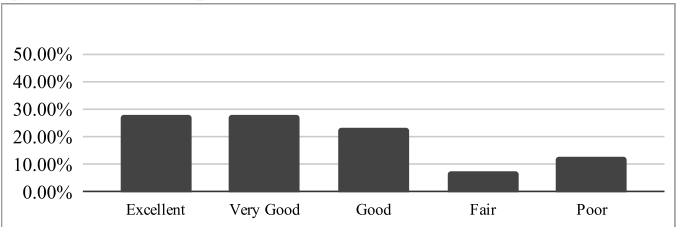
6 Students Guidance and mentoring facilities

Response	No. of Responses	% Response	% Satisfaction
Excellent	12	30.77%	72.31%
Very Good	12	30.77%	
Good	8	20.51%	Remark
Fair	2	5.13%	Very Good
Poor	5	12.82%	



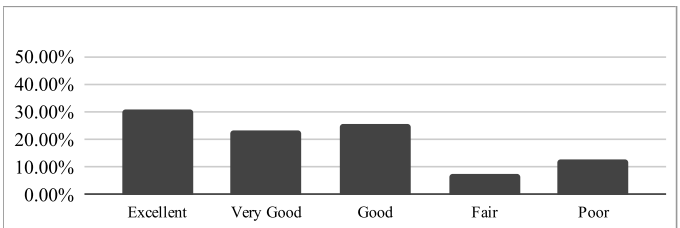
7 Availability of modern instruments and arrangements/facilities to provide hands on experience

Response	No. of Responses	% Response	% Satisfaction
Excellent	11	28.21%	70.26%
Very Good	11	28.21%	
Good	9	23.08%	Remark
Fair	3	7.69%	Very Good
Poor	5	12.82%	



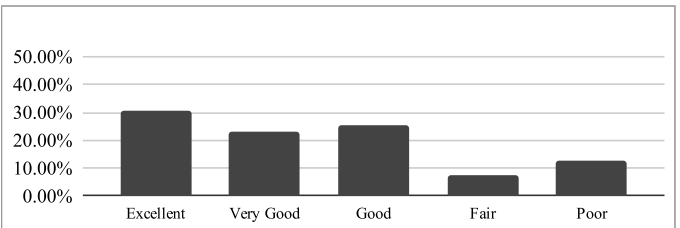
8 Library Facility

Response	No. of Responses	% Response	% Satisfaction
Excellent	10	25.64%	72.82%
Very Good	13	33.33%	
Good	10	25.64%	Remark
Fair	4	10.26%	Very Good
Poor	2	5.13%	



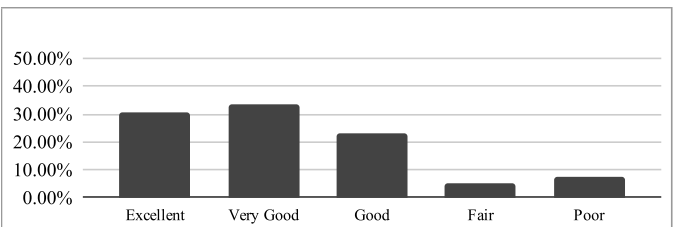
9 Sports Facility

Response	No. of Responses	% Response	% Satisfaction
Excellent	12	30.77%	70.26%
Very Good	9	23.08%	
Good	10	25.64%	Remark
Fair	3	7.69%	Very Good
Poor	5	12.82%	



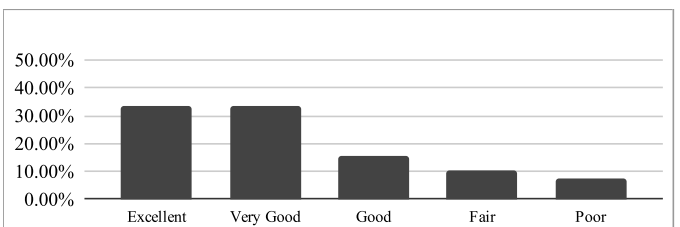
10 Canteen Facility

Response	No. of Responses	% Response	% Satisfaction
Excellent	12	30.77%	74.87%
Very Good	13	33.33%	
Good	9	23.08%	Remark
Fair	2	5.13%	Very Good
Poor	3	7.69%	



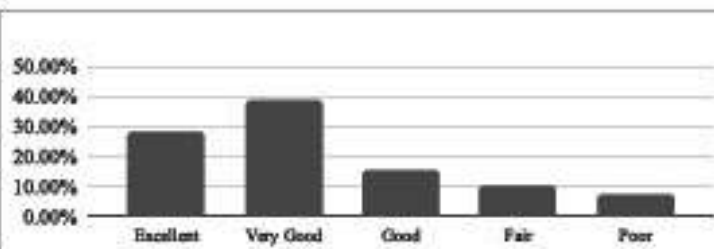
11 Transport Facility

Response	No. of Responses	% Response	% Satisfaction
Excellent	13	33.33%	74.87%
Very Good	13	33.33%	
Good	6	15.38%	Remark
Fair	4	10.26%	Very Good
Poor	3	7.69%	



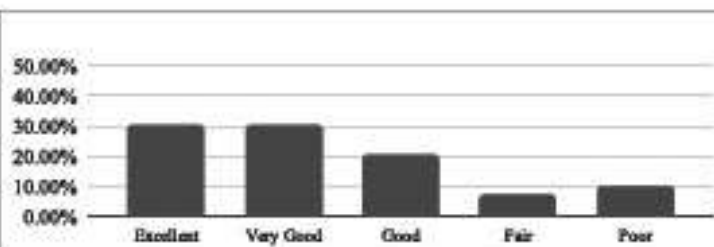
12 Internet Facility

Response	No. of Responses	% Response	% Satisfaction
Excellent	11	28.21%	73.85%
Very Good	15	38.46%	
Good	6	15.38%	Remark
Fair	4	10.26%	Very Good
Poor	3	7.69%	



13 Sanitation Facility

Response	No. of Responses	% Response	% Satisfaction
Excellent	12	30.77%	72.82%
Very Good	12	30.77%	
Good	8	20.51%	Remark
Fair	3	7.69%	Very Good
Poor	4	10.26%	



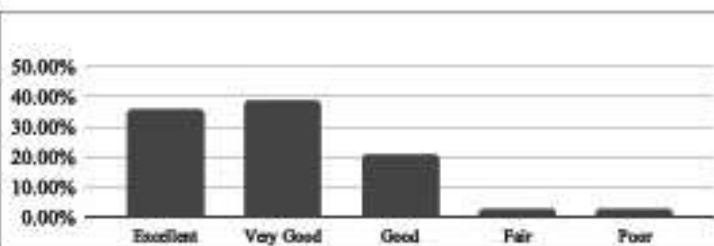
14 First Aid Facility

Response	No. of Responses	% Response	% Satisfaction
Excellent	0	0.00%	0.00%
Very Good	0	0.00%	
Good	0	0.00%	Remark
Fair	0	0.00%	Poor
Poor	0	0.00%	



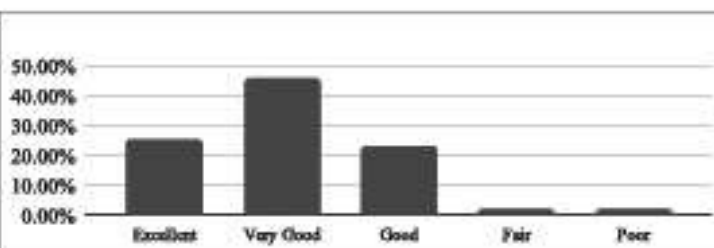
15 Security Facility


Response	No. of Responses	% Response	% Satisfaction
Excellent	14	35.90%	80.51%
Very Good	15	38.46%	
Good	8	20.51%	Remark
Fair	1	2.56%	Very Good
Poor	1	2.56%	



16 Drinking Water

Response	No. of Responses	% Response	% Satisfaction
Excellent	10	25.64%	77.95%
Very Good	18	46.15%	
Good	9	23.08%	Remark
Fair	1	2.56%	Very Good
Poor	1	2.56%	




 Prof. Nicky S. Balani
 Feedback Incharge


 Dr. Abhay R. Kasetwar
 Head of Department



**Department of
Electronics & Telecommunication Engineering**

“Emerge as a center for quality education in Electronics & Telecommunication Engineering, so as to create competent professionals”



**Academic Session 2021-22 (EVEN)
Student Satisfaction Survey Report**

Date:06/05/2022

Class: 4th Year / 8th Semester (Section-B)

Class Incharge: Prof. Mayur Temburney

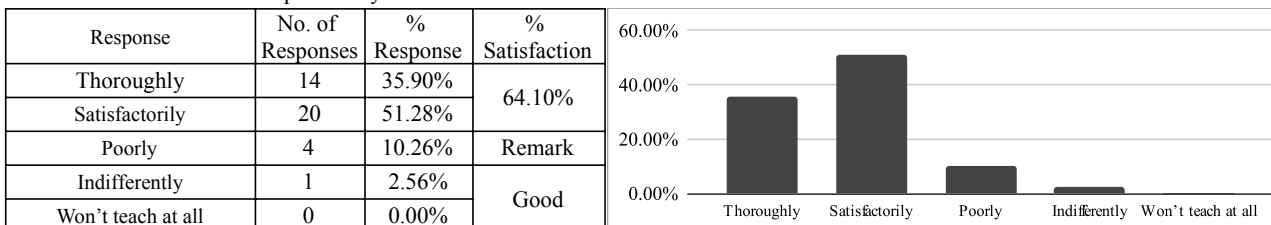
No. of Participants involved in Feedback: **39**

PART-A: Teaching Learning Process

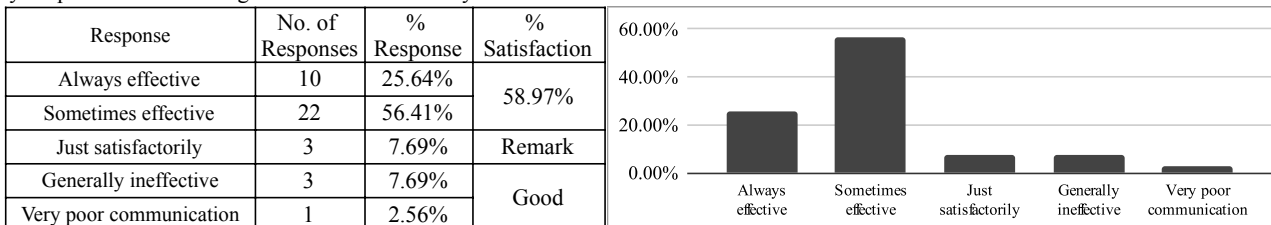
4. The teacher’s approach to teaching can best be described as



5. Fairness of the internal evaluation process by the teachers.



6. Was your performance in assignments discussed with you?

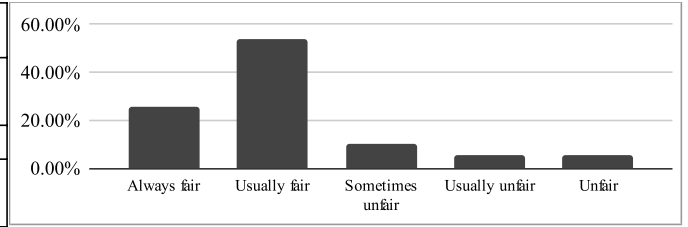


7. The institute takes active interest in promoting internship, field visit opportunities for students.



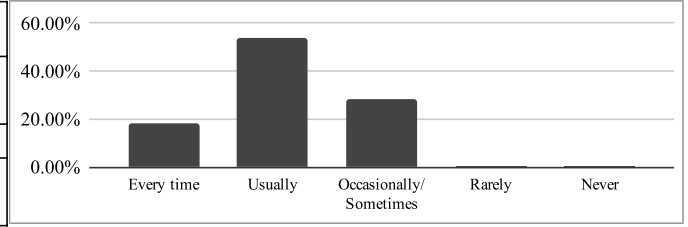
8. The teaching and mentoring process in your institution facilitates you in cognitive, social and emotional growth.

Response	No. of Responses	% Response	% Satisfaction
Always fair	10	25.64%	72.44%
Usually fair	21	53.85%	
Sometimes unfair	4	10.26%	Remark
Usually unfair	2	5.13%	Very Good
Unfair	2	5.13%	



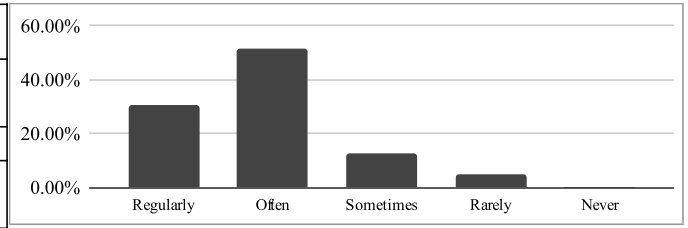
9. The institution provides multiple opportunities to learn and grow.

Response	No. of Responses	% Response	% Satisfaction
Every time	7	17.95%	72.44%
Usually	21	53.85%	
Occasionally/ Sometimes	11	28.21%	Remark
Rarely	0	0.00%	Very Good
Never	0	0.00%	



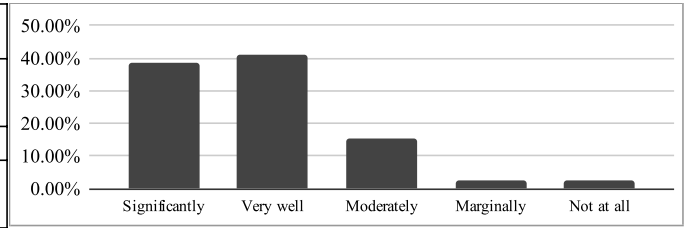
10. Teachers inform you about your expected competencies, course outcomes and programme outcomes and review the course syllabus in the clas

Response	No. of Responses	% Response	% Satisfaction
Regularly	12	30.77%	76.92%
Often	20	51.28%	
Sometimes	5	12.82%	Remark
Rarely	2	5.13%	Very Good
Never	0	0.00%	



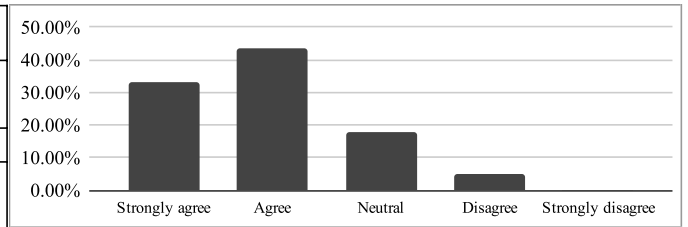
11. Your mentor does a necessary follow-up with an assigned task to you.

Response	No. of Responses	% Response	% Satisfaction
Significantly	15	38.46%	77.56%
Very well	16	41.03%	
Moderately	6	15.38%	Remark
Marginally	1	2.56%	Very Good
Not at all	1	2.56%	



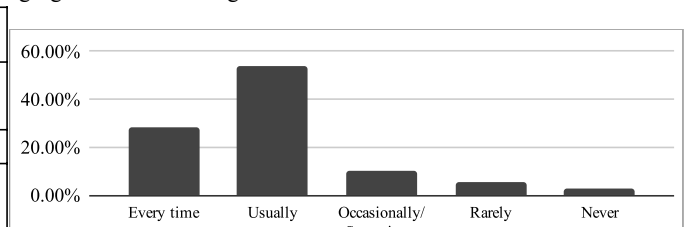
12. The teachers illustrate the concepts through examples and applications.

Response	No. of Responses	% Response	% Satisfaction
Strongly agree	13	33.33%	76.28%
Agree	17	43.59%	
Neutral	7	17.95%	Remark
Disagree	2	5.13%	Very Good
Strongly disagree	0	0.00%	



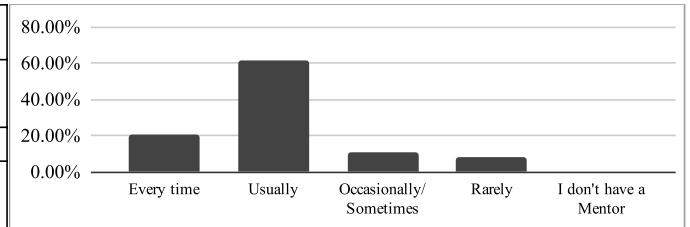
13. The teachers identify your strengths and encourage you with providing right level of challenges.

Response	No. of Responses	% Response	% Satisfaction
Every time	11	28.21%	75.00%
Usually	21	53.85%	
Occasionally/ Sometimes	4	10.26%	Remark
Rarely	2	5.13%	Very Good
Never	1	2.56%	



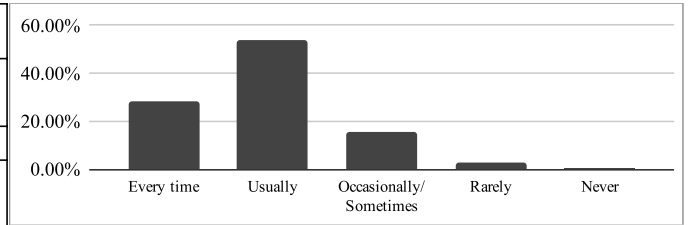
14. Teachers are able to identify your weaknesses and help you to overcome them.

Response	No. of Responses	% Response	% Satisfaction
Every time	8	20.51%	73.72%
Usually	24	61.54%	
Occasionally/ Sometimes	4	10.26%	Remark
Rarely	3	7.69%	Very Good
I don't have a Mentor	0	0.00%	



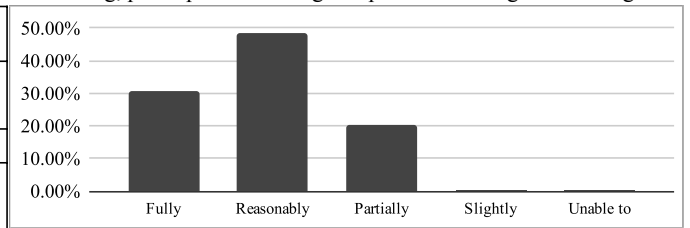
15. The institution makes effort to engage students in the monitoring, review and continuous quality improvement of the teaching learning process

Response	No. of Responses	% Response	% Satisfaction
Every time	11	28.21%	76.92%
Usually	21	53.85%	
Occasionally/ Sometimes	6	15.38%	Remark
Rarely	1	2.56%	Very Good
Never	0	0.00%	



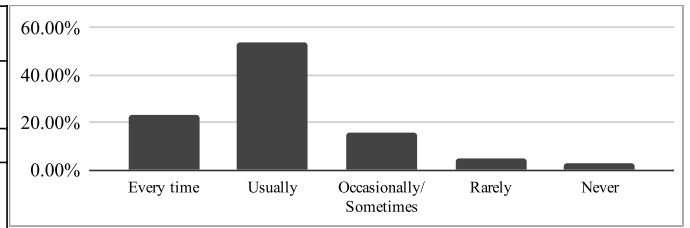
16. The institute/ teachers use student centric methods, such as experiential learning, participative learning and problem solving methodologies fo

Response	No. of Responses	% Response	% Satisfaction
Fully	12	30.77%	77.56%
Reasonably	19	48.72%	
Partially	8	20.51%	Remark
Slightly	0	0.00%	Very Good
Unable to	0	0.00%	



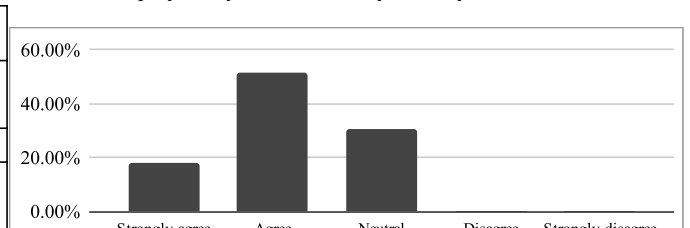
17. Teachers encourage you to participate in extracurricular activities.

Response	No. of Responses	% Response	% Satisfaction
Every time	9	23.08%	72.44%
Usually	21	53.85%	
Occasionally/ Sometimes	6	15.38%	Remark
Rarely	2	5.13%	Very Good
Never	1	2.56%	



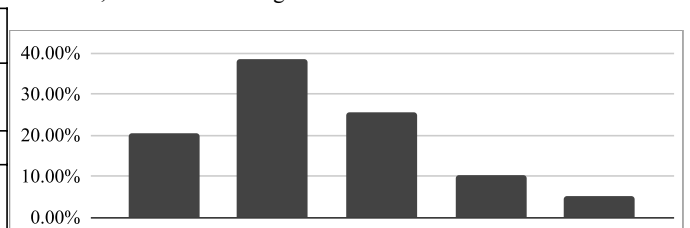
18. Efforts are made by the institute/ teachers to inculcate soft skills, life skills and employability skills to make you ready for the world of work.

Response	No. of Responses	% Response	% Satisfaction
Strongly agree	7	17.95%	71.79%
Agree	20	51.28%	
Neutral	12	30.77%	Remark
Disagree	0	0.00%	Very Good
Strongly disagree	0	0.00%	



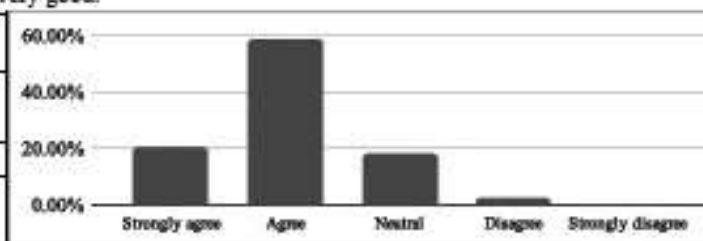
19. What percentage of teachers use ICT tools such as LCD projector, Multimedia, etc. while teaching.

Response	No. of Responses	% Response	% Satisfaction
To a great extent	8	20.51%	64.74%
Moderate	15	38.46%	
Some what	10	25.64%	Remark
Very little	4	10.26%	Good
Not at all	2	5.13%	



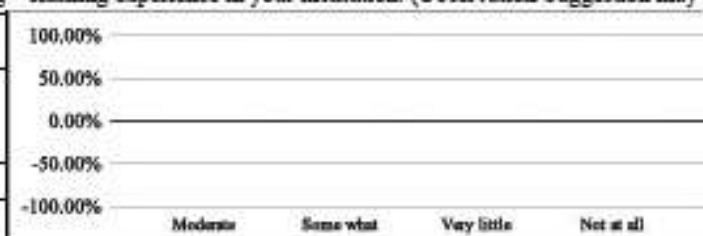
20. The overall quality of teaching-learning process in your institute is very good.

Response	No. of Responses	% Response	% Satisfaction
Strongly agree	8	20.51%	74.36%
Agree	23	58.97%	
Neutral	7	17.95%	Remark
Disagree	1	2.56%	
Strongly disagree	0	0.00%	
			Very Good



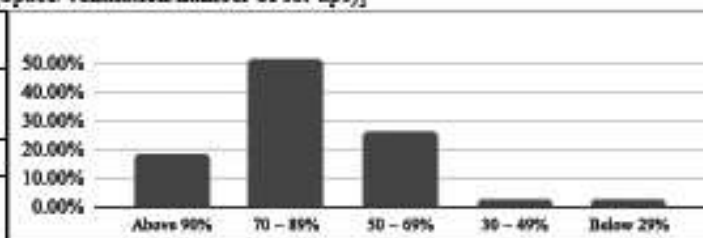
21. Give three observation / suggestions to improve the overall teaching – learning experience in your institution. (Observation/Suggestion may al

Response	No. of Responses	% Response	% Satisfaction
To a great extent	Response (B)	#VALUE !	76.92%
Moderate		0.00%	
Some what		0.00%	Remark
Very little		0.00%	
Not at all		0.00%	
			Very Good



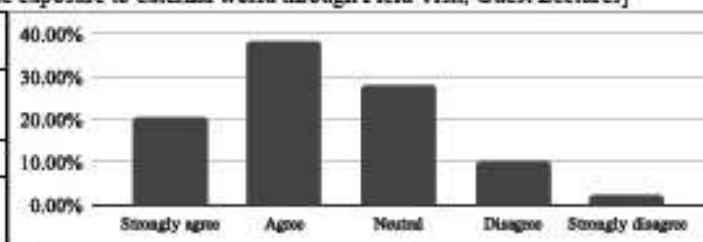
Institutional Facilities and Support [Adequacy of Laboratory facilities (Space/Ventilation/number of set-ups)]

Response	No. of Responses	% Response	% Satisfaction
Above 90%	7	17.95%	75.90%
70 – 89%	20	51.28%	
50 – 69%	10	25.64%	Remark
30 – 49%	1	2.56%	
Below 29%	1	2.56%	
			Very Good



Institutional Facilities and Support [Mechanism and approach to provide exposure to external world through Field Visit, Guest Lectures]

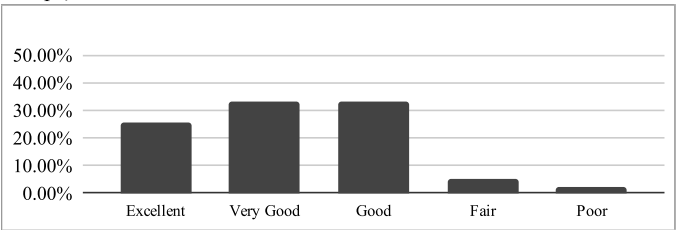
Response	No. of Responses	% Response	% Satisfaction
Strongly agree	8	20.51%	72.82%
Agree	15	38.46%	
Neutral	11	28.21%	Remark
Disagree	4	10.26%	
Strongly disagree	1	2.56%	
			Very Good



PART-B: Institutional Facilities and Support

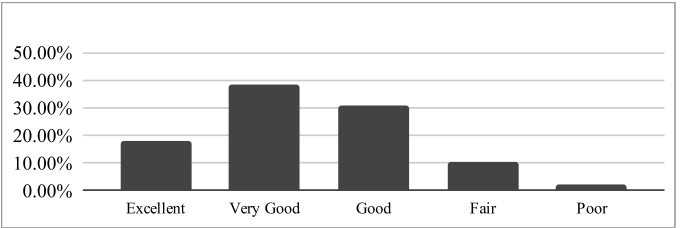
1 Adequacy of Laboratory facilities (Space/Ventilation/number of set-ups)

Response	No. of Responses	% Response	% Satisfaction
Excellent	10	25.64%	74.87%
Very Good	13	33.33%	
Good	13	33.33%	Remark
Fair	2	5.13%	Very Good
Poor	1	2.56%	



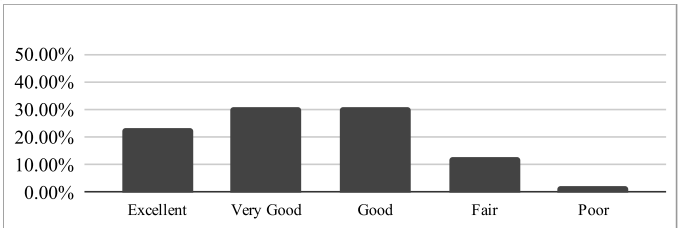
2 Mechanism and approach to provide exposure to external world through Field Visit, Guest Lectures

Response	No. of Responses	% Response	% Satisfaction
Excellent	7	17.95%	71.79%
Very Good	15	38.46%	
Good	12	30.77%	Remark
Fair	4	10.26%	Very Good
Poor	1	2.56%	



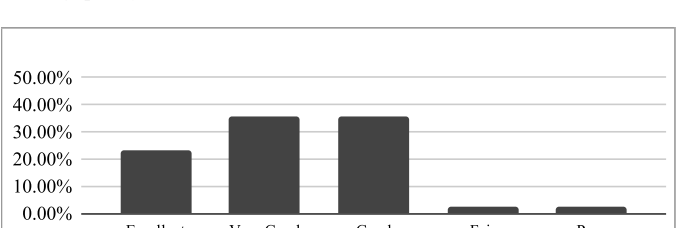
3 Infrastructure (Furniture/Black Board/Illumination/Fans/Flooring etc.)

Response	No. of Responses	% Response	% Satisfaction
Excellent	9	23.08%	71.79%
Very Good	12	30.77%	
Good	12	30.77%	Remark
Fair	5	12.82%	Very Good
Poor	1	2.56%	



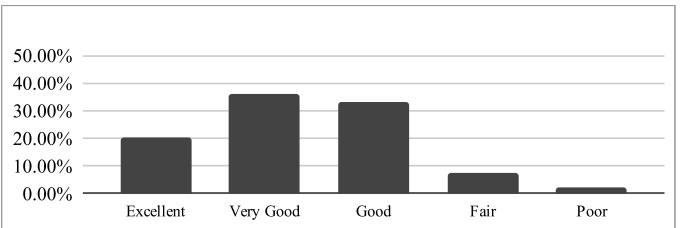
4 Overall approach and commitment of the Department towards providing quality Technical and Professional Education.

Response	No. of Responses	% Response	% Satisfaction
Excellent	9	23.08%	74.87%
Very Good	14	35.90%	
Good	14	35.90%	Remark
Fair	1	2.56%	Very Good
Poor	1	2.56%	



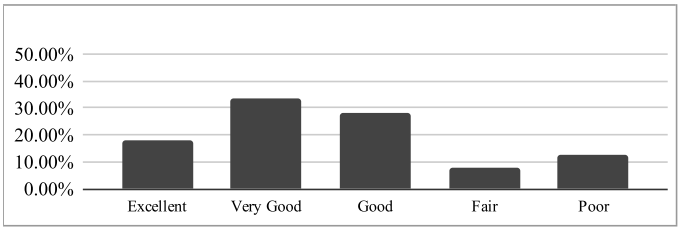
5 Mechanism and approach to deal with students/parents grievances

Response	No. of Responses	% Response	% Satisfaction
Excellent	8	20.51%	72.82%
Very Good	14	35.90%	
Good	13	33.33%	Remark
Fair	3	7.69%	Very Good
Poor	1	2.56%	



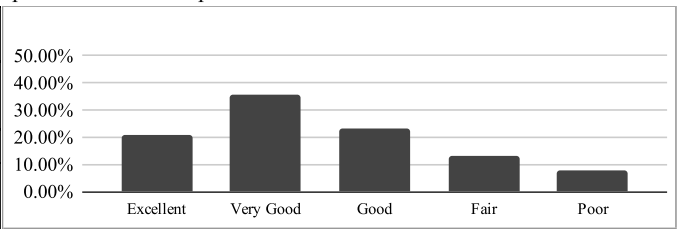
6 Students Guidance and mentoring facilities

Response	No. of Responses	% Response	% Satisfaction
Excellent	7	17.95%	67.18%
Very Good	13	33.33%	
Good	11	28.21%	Remark
Fair	3	7.69%	Good
Poor	5	12.82%	



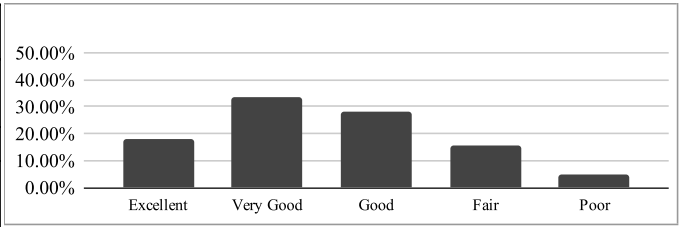
7 Availability of modern instruments and arrangements/facilities to provide hands on experience

Response	No. of Responses	% Response	% Satisfaction
Excellent	8	20.51%	69.74%
Very Good	14	35.90%	
Good	9	23.08%	Remark
Fair	5	12.82%	Good
Poor	3	7.69%	



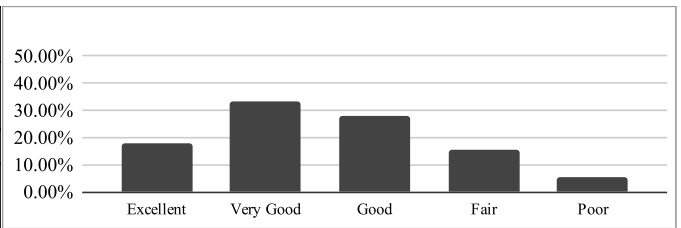
8 Library Facility

Response	No. of Responses	% Response	% Satisfaction
Excellent	7	17.95%	68.72%
Very Good	12	30.77%	
Good	13	33.33%	Remark
Fair	5	12.82%	Good
Poor	2	5.13%	



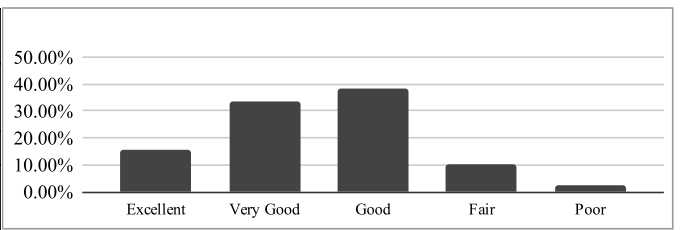
9 Sports Facility

Response	No. of Responses	% Response	% Satisfaction
Excellent	7	17.95%	68.72%
Very Good	13	33.33%	
Good	11	28.21%	Remark
Fair	6	15.38%	Good
Poor	2	5.13%	



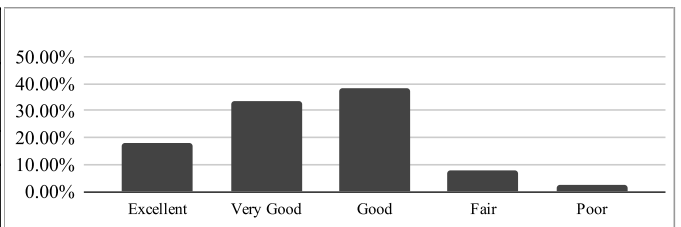
10 Canteen Facility

Response	No. of Responses	% Response	% Satisfaction
Excellent	6	15.38%	69.74%
Very Good	13	33.33%	
Good	15	38.46%	Remark
Fair	4	10.26%	Good
Poor	1	2.56%	



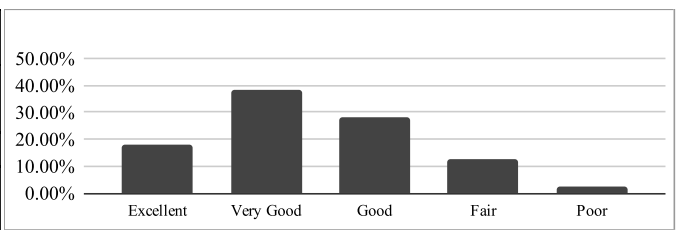
11 Transport Facility

Response	No. of Responses	% Response	% Satisfaction
Excellent	7	17.95%	71.28%
Very Good	13	33.33%	
Good	15	38.46%	Remark
Fair	3	7.69%	Very Good
Poor	1	2.56%	



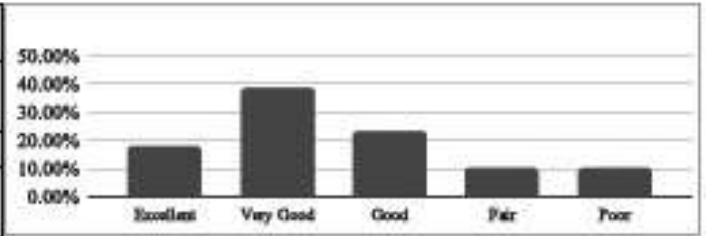
12 Internet Facility

Response	No. of Responses	% Response	% Satisfaction
Excellent	7	17.95%	71.28%
Very Good	15	38.46%	
Good	11	28.21%	Remark
Fair	5	12.82%	Very Good
Poor	1	2.56%	



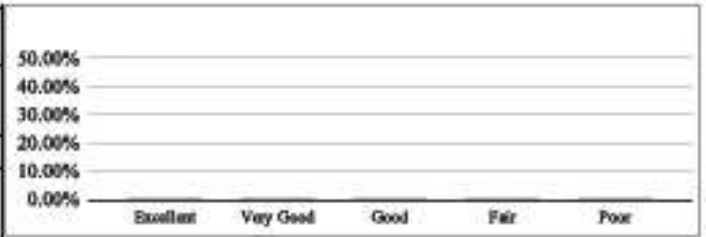
13 Sanitation Facility

Response	No. of Responses	% Response	% Satisfaction
Excellent	7	17.95%	68.72%
Very Good	15	38.46%	
Good	9	23.08%	Remark
Fair	4	10.26%	
Poor	4	10.26%	



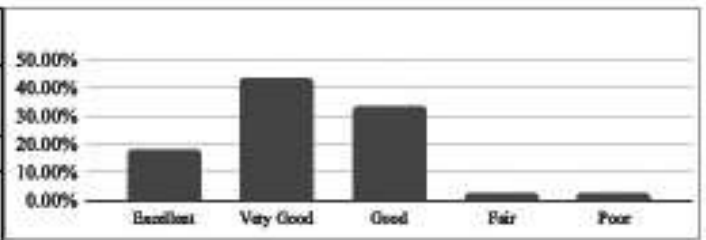
14 First Aid Facility

Response	No. of Responses	% Response	% Satisfaction
Excellent	0	0.00%	0.00%
Very Good	0	0.00%	
Good	0	0.00%	Remark
Fair	0	0.00%	
Poor	0	0.00%	



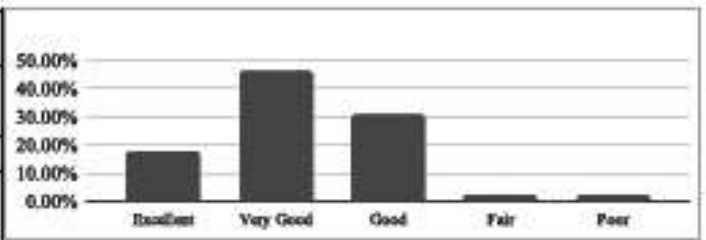
15 Security Facility


Response	No. of Responses	% Response	% Satisfaction
Excellent	7	17.95%	74.36%
Very Good	17	43.59%	
Good	13	33.33%	Remark
Fair	1	2.56%	
Poor	1	2.56%	



16 Drinking Water

Response	No. of Responses	% Response	% Satisfaction
Excellent	7	17.95%	74.87%
Very Good	18	46.15%	
Good	12	30.77%	Remark
Fair	1	2.56%	
Poor	1	2.56%	




 Prof. Nicky S. Balani
 Feedback Incharge


 Dr. Abhay R. Kasetwar
 Head of Department