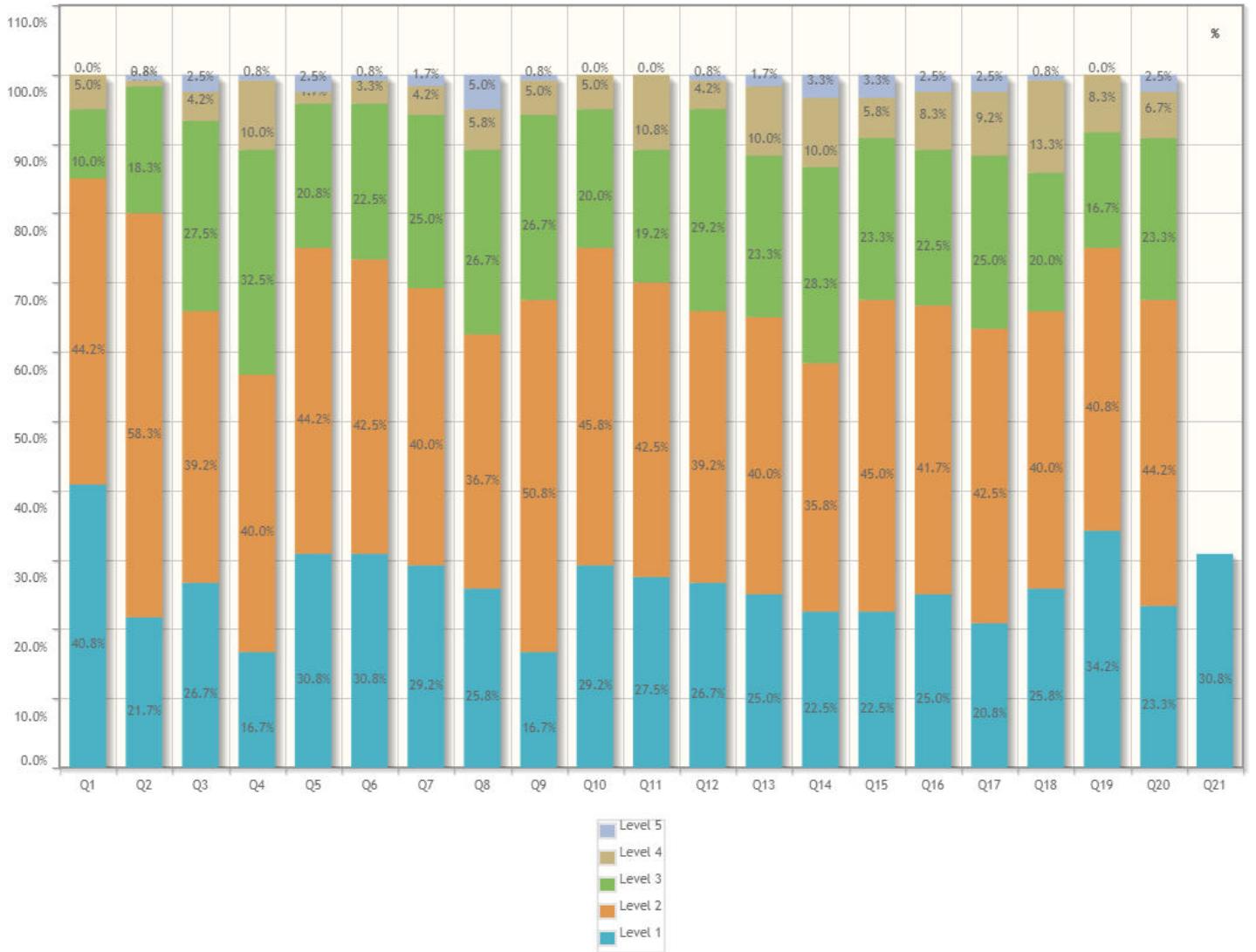


Survey Details - Detailed & Summary Report

Survey: SSS Part A T&L IV SEM	Survey Type: Fresh Survey
Survey For: Facility Feedback	Program: B.Tech. Computer Science and Engineering in Computer Science and Engineering

Detailed Report



1. How much of the syllabus was covered in the class?	Responses	Weighted Responses	Percent
1. 85 to 100%	49	245	40.83%
2. 70 to 84%	53	212	44.17%
3. 55 to 69%	12	36	10.00%
4. 30 to 54%	6	12	5.00%
5. Below 30%	0	0	0.00%
Total	120	505	84.17%

2. How well did the teachers prepare for the classes?	Responses	Weighted Responses	Percent
1. Thoroughly	26	130	21.67%



Sir Shantilal Badjate Charitable Trust, Nagpur
 S. B. Jain Institute of Technology, Management & Research, Nagpur
 (Approved by AICTE, An Autonomous Institute) Affiliated to R. T. M. Nagpur University
 Department of Computer Science and Engineering

2. How well did the teachers prepare for the classes?	Responses	Weighted Responses	Percent
2. Satisfactorily	70	140	58.33%
3. Poorly	22	66	18.33%
4. Indifferently	1	2	0.83%
5. Won't teach at all	1	1	0.83%
Total	120	339	56.50%

3. How well were the teachers able to communicate?	Responses	Weighted Responses	Percent
1. Always effective	32	160	26.67%
2. Sometimes effective	47	188	39.17%
3. Just satisfactorily	33	99	27.50%
4. Generally ineffective	5	10	4.17%
5. Very poor communication	3	3	2.50%
Total	120	460	76.67%

4. The teacher's approach to teaching can best be described as	Responses	Weighted Responses	Percent
1. Excellent	20	100	16.67%
2. Very good	48	192	40.00%
3. Good	39	117	32.50%
4. Fair	12	48	10.00%
5. Poor	1	1	0.83%
Total	120	458	76.33%

5. Fairness of the internal evaluation process by the teachers	Responses	Weighted Responses	Percent
1. Always fair	37	185	30.83%
2. Usually fair	53	212	44.17%
3. Sometimes unfair	25	75	20.83%
4. Usually unfair	2	4	1.67%
5. Unfair	3	3	2.50%
Total	120	479	79.83%

6. Was your performance in assignments discussed with you?	Responses	Weighted Responses	Percent
1. Every time	37	185	30.83%
2. Usually	51	204	42.50%
3. Occasionally/Sometimes	27	81	22.50%
4. Rarely	4	8	3.33%
5. Never	1	1	0.83%
Total	120	479	79.83%

7. The institute takes active interest in promoting internship opportunities for students.	Responses	Weighted Responses	Percent
1. Regularly	35	175	29.17%
2. Often	48	192	40.00%
3. Sometimes	30	90	25.00%
4. Rarely	5	10	4.17%
5. Never	2	2	1.67%



Sir Shantilal Badjate Charitable Trust, Nagpur
 S. B. Jain Institute of Technology, Management & Research, Nagpur
 (Approved by AICTE, An Autonomous Institute) Affiliated to R. T. M. Nagpur University
 Department of Computer Science and Engineering

7. The institute takes active interest in promoting internship opportunities for students.	Responses	Weighted Responses	Percent
Total	120	469	78.17%

8. The teaching and mentoring process in your institution facilitates you in cognitive, social and emotional growth.	Responses	Weighted Responses	Percent
1. Significantly	31	155	25.83%
2. Very well	44	176	36.67%
3. Moderately	32	96	26.67%
4. Marginally	7	14	5.83%
5. Not at all	6	6	5.00%
Total	120	447	74.50%

9. The institution provides multiple opportunities to learn and grow.	Responses	Weighted Responses	Percent
1. Strongly agree	20	100	16.67%
2. Agree	61	244	50.83%
3. Neutral	32	96	26.67%
4. Disagree	6	12	5.00%
5. Strongly disagree	1	1	0.83%
Total	120	453	75.50%

10. Teachers inform you about your expected competencies, course outcomes and programme outcomes and review the course syllabus in the class.	Responses	Weighted Responses	Percent
1. Every time	35	175	29.17%
2. Usually	55	220	45.83%
3. Occasionally/Sometimes	24	72	20.00%
4. Rarely	6	12	5.00%
5. Never	0	0	0.00%
Total	120	479	79.83%

11. Your mentor does a necessary follow-up with an assigned task to you	Responses	Weighted Responses	Percent
1. Every time	33	165	27.50%
2. Usually	51	204	42.50%
3. Occasionally/Sometimes	23	69	19.17%
4. Rarely	13	26	10.83%
5. I don't have a mentor	0	0	0.00%
Total	120	464	77.33%

12. The teachers illustrate the concepts through examples and applications.	Responses	Weighted Responses	Percent
1. Every time	32	160	26.67%
2. Usually	47	188	39.17%
3. Occasionally/Sometimes	35	105	29.17%
4. Rarely	5	10	4.17%
5. Never	1	1	0.83%
Total	120	464	77.33%



Sir Shantilal Badjate Charitable Trust, Nagpur
S. B. Jain Institute of Technology, Management & Research, Nagpur
(Approved by AICTE, An Autonomous Institute) Affiliated to R. T. M. Nagpur University
Department of Computer Science and Engineering

13. The teachers identify your strengths and encourage you with providing right level of challenges.	Responses	Weighted Responses	Percent
1. Fully	30	150	25.00%
2. Reasonably	48	192	40.00%
3. Partially	28	84	23.33%
4. Slightly	12	24	10.00%
5. Unable to	2	2	1.67%
Total	120	452	75.33%

14. Teachers are able to identify your weaknesses and help you to overcome them.	Responses	Weighted Responses	Percent
1. Every time	27	135	22.50%
2. Usually	43	172	35.83%
3. Occasionally/Sometimes	34	102	28.33%
4. Rarely	12	24	10.00%
5. Never	4	4	3.33%
Total	120	437	72.83%

15. The institution makes effort to engage students in the monitoring, review and continuous quality improvement of the teaching learning process.\n	Responses	Weighted Responses	Percent
1. Strongly agree	27	135	22.50%
2. Agree	54	216	45.00%
3. Neutral	28	84	23.33%
4. Disagree	7	14	5.83%
5. Strongly disagree	4	4	3.33%
Total	120	453	75.50%

16. The institute/ teachers use student centric methods, such as experiential learning, participative learning and problem solving methodologies for enhancing learning\nexperiences.	Responses	Weighted Responses	Percent
1. To a great extent	30	150	25.00%
2. Moderate	50	100	41.67%
3. Some what	27	81	22.50%
4. Very little	10	20	8.33%
5. Not at all	3	3	2.50%
Total	120	354	59.00%

17. Teachers encourage you to participate in extracurricular activities.	Responses	Weighted Responses	Percent
1. Strongly agree	25	125	20.83%
2. Agree	51	204	42.50%
3. Neutral	30	90	25.00%
4. Disagree	11	22	9.17%
5. Strongly disagree	3	15	2.50%
Total	120	456	76.00%



Sir Shantilal Badjate Charitable Trust, Nagpur
S. B. Jain Institute of Technology, Management & Research, Nagpur
(Approved by AICTE, An Autonomous Institute) Affiliated to R. T. M. Nagpur University
Department of Computer Science and Engineering

18. Efforts are made by the institute/ teachers to inculcate soft skills, life skills and employability skills to make you ready for the world of work.	Responses	Weighted Responses	Percent
1. To a great extent	31	155	25.83%
2. Moderate	48	96	40.00%
3. Some what	24	72	20.00%
4. Very little	16	32	13.33%
5. Not at all	1	1	0.83%
Total	120	356	59.33%

19. What percentage of teachers uses ICT tools such as PPTs, Multimedia, animations, etc. while teaching	Responses	Weighted Responses	Percent
1. Above 90%	41	205	34.17%
2. 70 - 89%	49	196	40.83%
3. 50 - 69%	20	60	16.67%
4. 30 - 49%	10	20	8.33%
5. Below 29%	0	0	0.00%
Total	120	481	80.17%

20. The overall quality of teaching-learning process in your institute is very good.	Responses	Weighted Responses	Percent
1. Strongly agree	28	140	23.33%
2. Agree	53	212	44.17%
3. Neutral	28	84	23.33%
4. Disagree	8	16	6.67%
5. Strongly disagree	3	3	2.50%
Total	120	455	75.83%

21. Give three observation / suggestions to improve the overall teaching - learning experience in your institution. (Observation/Suggestion may also be a review of any course content of the syllabus/ Content you would have wished to learn).	Responses	Weighted Responses	Percent
1. Write Your answer in comment box	37	37	30.83%
Total	120	262	43.67%

Summary Report

Number of people Responded / Total number of Responders is **120 / 141** People.

Questions	Total Response Count	Weighted Response Percent
How much of the syllabus was covered in the class?	505	84.17%
How well did the teachers prepare for the classes?	339	56.50%
How well were the teachers able to communicate?	460	76.67%
The teacher's approach to teaching can best be described as	458	76.33%
Fairness of the internal evaluation process by the teachers	479	79.83%
Was your performance in assignments discussed with you?	479	79.83%
The institute takes active interest in promoting internship opportunities for students.	469	78.17%
The teaching and mentoring process in your institution facilitates you in cognitive, social and emotional growth.	447	74.50%
The institution provides multiple opportunities to learn and grow.	453	75.50%
Teachers inform you about your expected competencies, course outcomes and programme outcomes and review the course syllabus in the class.	479	79.83%
Your mentor does a necessary follow-up with an assigned task to you	464	77.33%
The teachers illustrate the concepts through examples and applications.	464	77.33%
The teachers identify your strengths and encourage you with providing right level of challenges.	452	75.33%
Teachers are able to identify your weaknesses and help you to overcome them.	437	72.83%
The institution makes effort to engage students in the monitoring, review and continuous quality improvement of the teaching learning process.	453	75.50%
The institute/ teachers use student centric methods, such as experiential learning, participative learning and problem solving methodologies for enhancing learning experiences.	354	59.00%
Teachers encourage you to participate in extracurricular activities.	456	76.00%
Efforts are made by the institute/ teachers to inculcate soft skills, life skills and employability skills to make you ready for the world of work.	356	59.33%



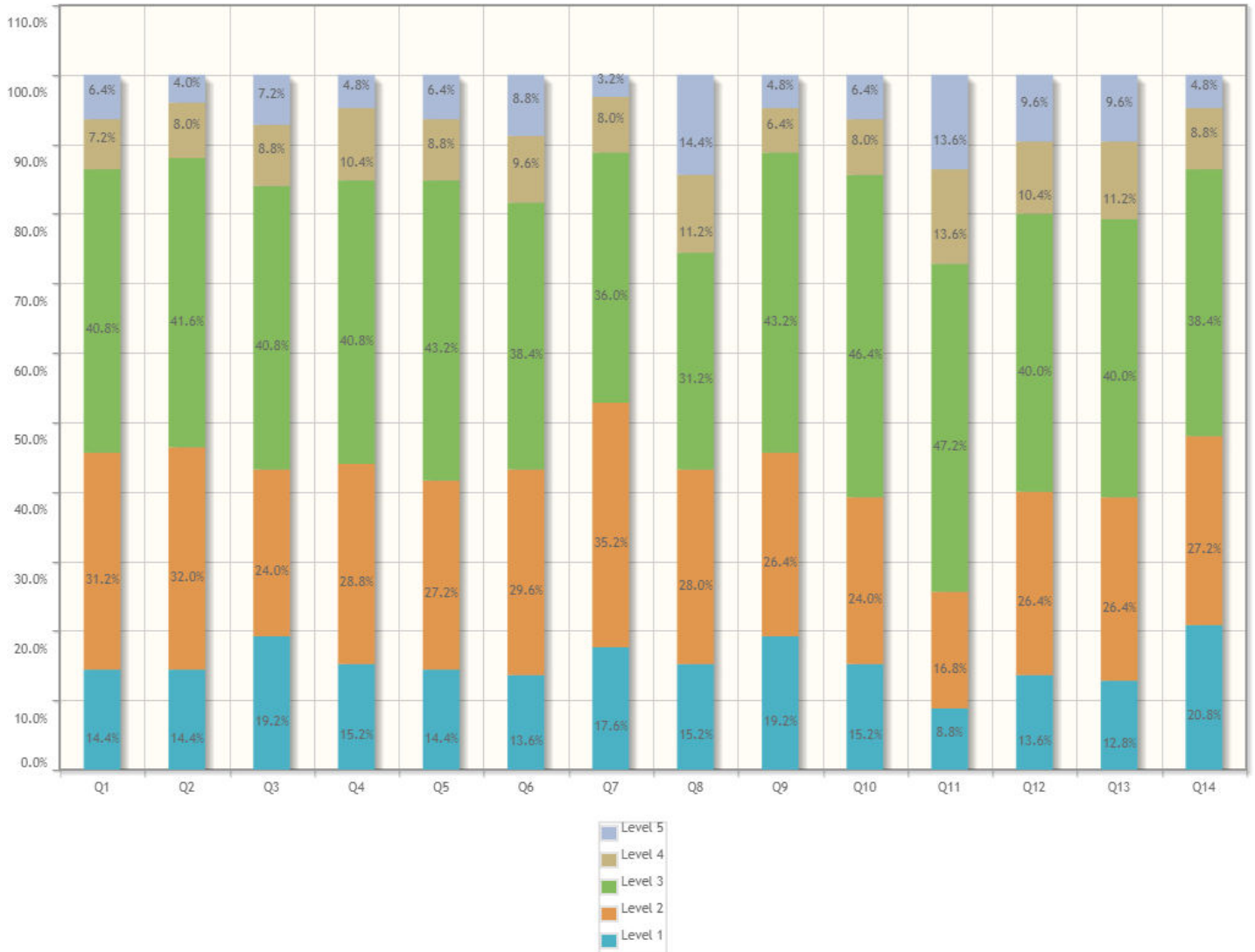
Sir Shantilal Badjate Charitable Trust, Nagpur
S. B. Jain Institute of Technology, Management & Research, Nagpur
(Approved by AICTE, An Autonomous Institute) Affiliated to R. T. M. Nagpur University
Department of Computer Science and Engineering

Questions	Total Response Count	Weighted Response Percent
What percentage of teachers uses ICT tools such as PPTs, Multimedia, animations, etc. while teaching	481	80.17%
The overall quality of teaching-learning process in your institute is very good.	455	75.83%
Give three observation / suggestions to improve the overall teaching - learning experience in your institution. (Observation/Suggestion may also be a review of any course content of the syllabus/ Content you would have wished to learn).	262	43.67%
Total Feedback	9202	73.03%

Survey Details - Detailed & Summary Report

Survey: SSS Part B - FF IV SEM	Survey Type: Fresh Survey
Survey For: Facility Feedback	Program: B.Tech. Computer Science and Engineering in Computer Science and Engineering

Detailed Report



1. Adequacy of Laboratory facilities (Number of set-ups/ equipments /tools etc.)	Responses	Weighted Responses	Percent
1. Excellent	18	90	14.40%
2. Very Good	39	156	31.20%
3. Good	51	153	40.80%
4. Fair	9	36	7.20%
5. Poor	8	8	6.40%
Total	125	443	70.88%



Sir Shantilal Badjate Charitable Trust, Nagpur
 S. B. Jain Institute of Technology, Management & Research, Nagpur
 (Approved by AICTE, An Autonomous Institute) Affiliated to R. T. M. Nagpur University
 Department of Computer Science and Engineering

2. Mechanism and approach to provide exposure to external world through Internships, Field Visits, Guest Lectures, Expert Talks etc.	Responses	Weighted Responses	Percent
1. Excellent	18	90	14.40%
2. Very Good	40	160	32.00%
3. Good	52	156	41.60%
4. Fair	10	40	8.00%
5. Poor	5	5	4.00%
Total	125	451	72.16%

3. Infrastructure (Furniture/Black Board / Illumination/Ventilation etc.)	Responses	Weighted Responses	Percent
1. Excellent	24	120	19.20%
2. Very Good	30	120	24.00%
3. Good	51	153	40.80%
4. Fair	11	44	8.80%
5. Poor	9	9	7.20%
Total	125	446	71.36%

4. Mechanism and approach to deal with students/parents grievances	Responses	Weighted Responses	Percent
1. Excellent	19	95	15.20%
2. Very Good	36	144	28.80%
3. Good	51	153	40.80%
4. Fair	13	52	10.40%
5. Poor	6	6	4.80%
Total	125	450	72.00%

5. Students guidance and mentoring facilities	Responses	Weighted Responses	Percent
1. Excellent	18	90	14.40%
2. Very Good	34	136	27.20%
3. Good	54	162	43.20%
4. Fair	11	44	8.80%
5. Poor	8	8	6.40%
Total	125	440	70.40%

6. Support for co-curricular and extra-curricular activities	Responses	Weighted Responses	Percent
1. Excellent	17	85	13.60%
2. Very Good	37	148	29.60%
3. Good	48	144	38.40%
4. Fair	12	48	9.60%
5. Poor	11	11	8.80%
Total	125	436	69.76%

7. Library Facility	Responses	Weighted Responses	Percent
1. Excellent	22	110	17.60%
2. Very Good	44	176	35.20%



Sir Shantilal Badjate Charitable Trust, Nagpur
 S. B. Jain Institute of Technology, Management & Research, Nagpur
 (Approved by AICTE, An Autonomous Institute) Affiliated to R. T. M. Nagpur University
 Department of Computer Science and Engineering

7. Library Facility	Responses	Weighted Responses	Percent
3. Good	45	135	36.00%
4. Fair	10	40	8.00%
5. Poor	4	4	3.20%
Total	125	465	74.40%

8. Sports Facility	Responses	Weighted Responses	Percent
1. Excellent	19	95	15.20%
2. Very Good	35	140	28.00%
3. Good	39	117	31.20%
4. Fair	14	56	11.20%
5. Poor	18	18	14.40%
Total	125	426	68.16%

9. Canteen Facility	Responses	Weighted Responses	Percent
1. Excellent	24	120	19.20%
2. Very Good	33	132	26.40%
3. Good	54	162	43.20%
4. Fair	8	32	6.40%
5. Poor	6	6	4.80%
Total	125	452	72.32%

10. Transport Facility	Responses	Weighted Responses	Percent
1. Excellent	19	95	15.20%
2. Very Good	30	120	24.00%
3. Good	58	174	46.40%
4. Fair	10	40	8.00%
5. Poor	8	8	6.40%
Total	125	437	69.92%

11. Internet Facility	Responses	Weighted Responses	Percent
1. Excellent	11	55	8.80%
2. Very Good	21	84	16.80%
3. Good	59	177	47.20%
4. Fair	17	68	13.60%
5. Poor	17	17	13.60%
Total	125	401	64.16%

12. Housekeeping	Responses	Weighted Responses	Percent
1. Excellent	17	85	13.60%
2. Very Good	33	132	26.40%
3. Good	50	150	40.00%
4. Fair	13	52	10.40%
5. Poor	12	12	9.60%
Total	125	431	68.96%



Sir Shantilal Badjate Charitable Trust, Nagpur
S. B. Jain Institute of Technology, Management & Research, Nagpur
(Approved by AICTE, An Autonomous Institute) Affiliated to R. T. M. Nagpur University
Department of Computer Science and Engineering

13. First Aid Facility	Responses	Weighted Responses	Percent
1. Excellent	16	80	12.80%
2. Very Good	33	132	26.40%
3. Good	50	150	40.00%
4. Fair	14	56	11.20%
5. Poor	12	12	9.60%
Total	125	430	68.80%

14. Security Facility	Responses	Weighted Responses	Percent
1. Excellent	26	130	20.80%
2. Very Good	34	136	27.20%
3. Good	48	144	38.40%
4. Fair	11	44	8.80%
5. Poor	6	6	4.80%
Total	125	460	73.60%



Summary Report

Number of people Responded / Total number of Responders is **125 / 141** People.

Questions	Total Response Count	Weighted Response Percent
Adequacy of Laboratory facilities (Number of set-ups/ equipments /tools etc.)	443	70.88%
Mechanism and approach to provide exposure to external world through Internships, Field Visits, Guest Lectures, Expert Talks etc.	451	72.16%
Infrastructure (Furniture/Black Board / Illumination/Ventilation etc.)	446	71.36%
Mechanism and approach to deal with students/parents grievances	450	72.00%
Students guidance and mentoring facilities	440	70.40%
Support for co-curricular and extra-curricular activities	436	69.76%
Library Facility	465	74.40%
Sports Facility	426	68.16%
Canteen Facility	452	72.32%
Transport Facility	437	69.92%
Internet Facility	401	64.16%
Housekeeping	431	68.96%
First Aid Facility	430	68.80%
Security Facility	460	73.60%
Total Feedback	6168	70.49%